

Kyle J. Helland, 1107 Technology Parkway, Cedar Falls, Iowa 50613-6951, (319)-266-0161

Reserved for County Recorder's use.

## UNITED STATES PUBLIC LAND SURVEY CORNER CERTIFICATE OF

LAND SURVEY MONUMENTS SITUATED IN SECTION NO. 4, TOWNSHIP NO. 89 NORTH, RANGE  
NO. 14 WEST OF THE FIFTH PRINCIPAL MERIDIAN, BLACK HAWK COUNTY, IOWA.  
PREVIOUSLY RECORDED IN N/A

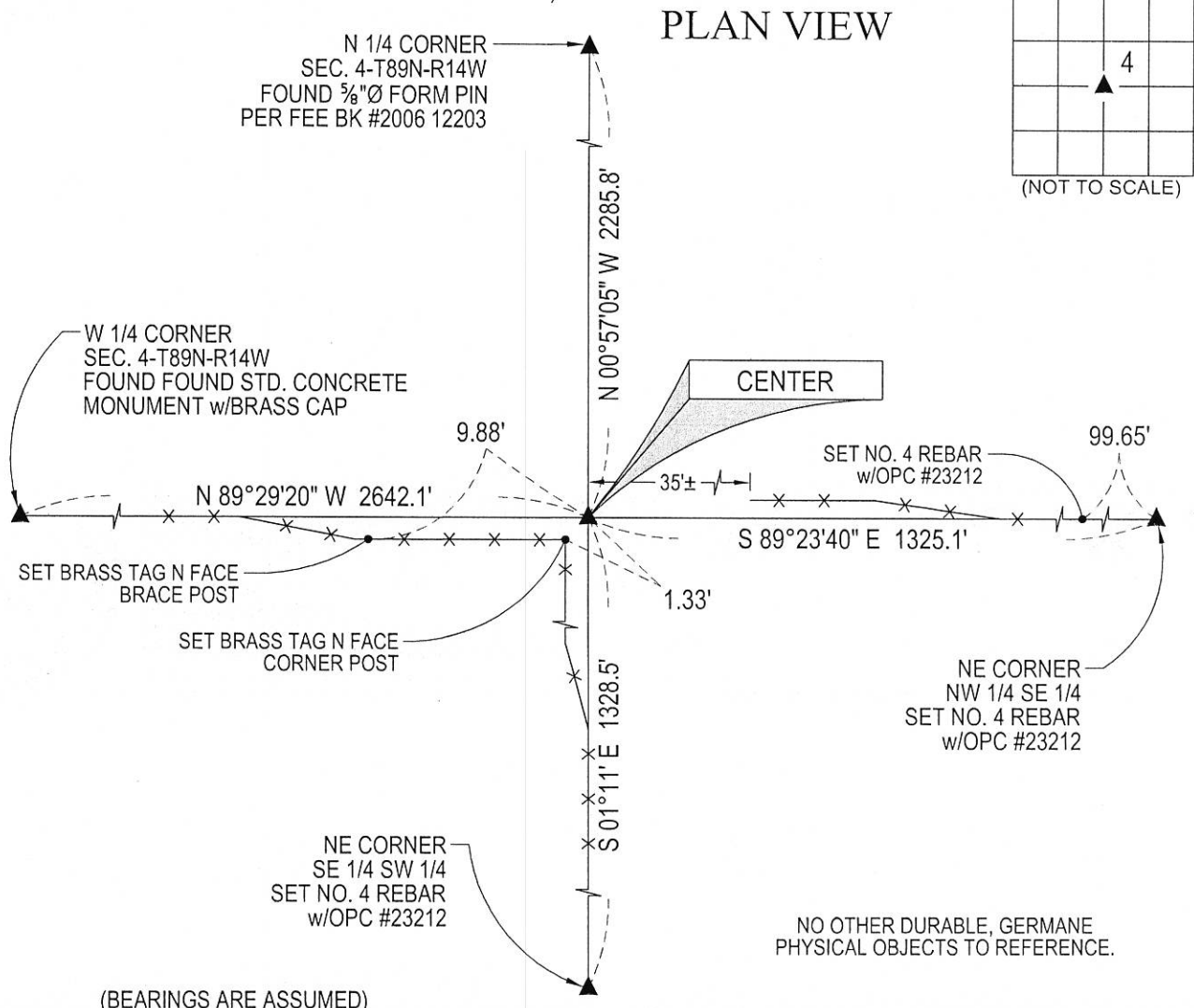
(SHOW REASON FOR PREPARING THIS CERTIFICATE, THE EVIDENCE AND DETAILED PROCEDURES USED IN ESTABLISHING THE  
CORNER POSITIONS AND MONUMENTATION FOUND OR PLACED.)

### MONUMENT DESCRIPTION AND REMARKS:

NO USPLSCC ON FILE. SURVEY COMPLETED IN THE SE 1/4 OF SEC. 4-T89N-R14W.

→ **CENTER:** NO BLACK HAWK COUNTY ENGINEER REFERENCE TIES, NOR ANY OTHER PUBLIC DOCUMENTATION  
OF THE HISTORY AND/OR PERPETUATION OF CORNER WAS AVAILABLE. SEARCHED AREA WITH MAGNETIC  
LOCATOR AND PROBED AREA AROUND CORNER POST, NOTHING FOUND. NOTE THAT MULTIPLE FIELD  
STONES ARE AT SURFACE IN VICINITY AROUND CORNER LOCATION. THEREFORE, SET NO. 4 REBAR w/OPC  
#23212 AT BEST FIT LOCATION BASED ON EXISTING OCCUPIED FENCE LINES RUNNING EAST, WEST AND  
SOUTH.

(SHOW A MINIMUM OF THREE REFERENCE TIES TO DURABLE PHYSICAL OBJECTS, RELEVANT MONUMENTS AND PHYSICAL  
CONDITIONS THAT WILL ENABLE RECOVERY OF THE CORNER.)



(BEARINGS ARE ASSUMED)

NO OTHER DURABLE, GERMANE  
PHYSICAL OBJECTS TO REFERENCE.



**HELLAND ENGINEERING & SURVEYING, LTD.**  
1107 Technology Parkway  
Cedar Falls, Iowa 50613-6951  
(319)-266-0161

SHINER = 4d. NAIL & 1 5/16"Ø METAL SHINER DRAWN BY: JBL  
BRASS TAG = 4d. NAIL & 13/16"Ø BRASS TAG  
OPC = PLASTIC CAP (O=ORANGE, R=RED, Y=YELLOW)  
(00') RECORDED AS FILE NAME: 18-167-29.DWG



I hereby certify that this land surveying document was prepared  
and the related survey work was performed by me or under my  
direct personal supervision and that I am a duly licensed  
Professional Land Surveyor under the laws of the State of Iowa.  
*Kyle J. Helland* 7/13/2018  
Kyle J. Helland  
License Number 23212  
My license renewal date is December 31, 2019.  
All pages or sheets are covered by this seal except:

LIST CORNERS TO BE INDEXED			
CORNER	SECTION	TOWNSHIP	RANGE
CENTER	4	89N	14W