

RESERVED FOR COUNTY RECORDER'S USE.

Doc ID: 010047860001 Type: GEN
Recorded: 01/12/2021 at 03:36:32 PM
Fee Amt: \$7.00 Page 1 of 1
Black Hawk County Iowa
SANDIE L. SMITH RECORDER
File **2021-00014667**

Env
* City of Cedar Falls
Jeffrey P. Helland, 220 Clay Street, Cedar Falls, Iowa 50613, (319)-268-5173

UNITED STATES PUBLIC LAND SURVEY CORNER CERTIFICATE

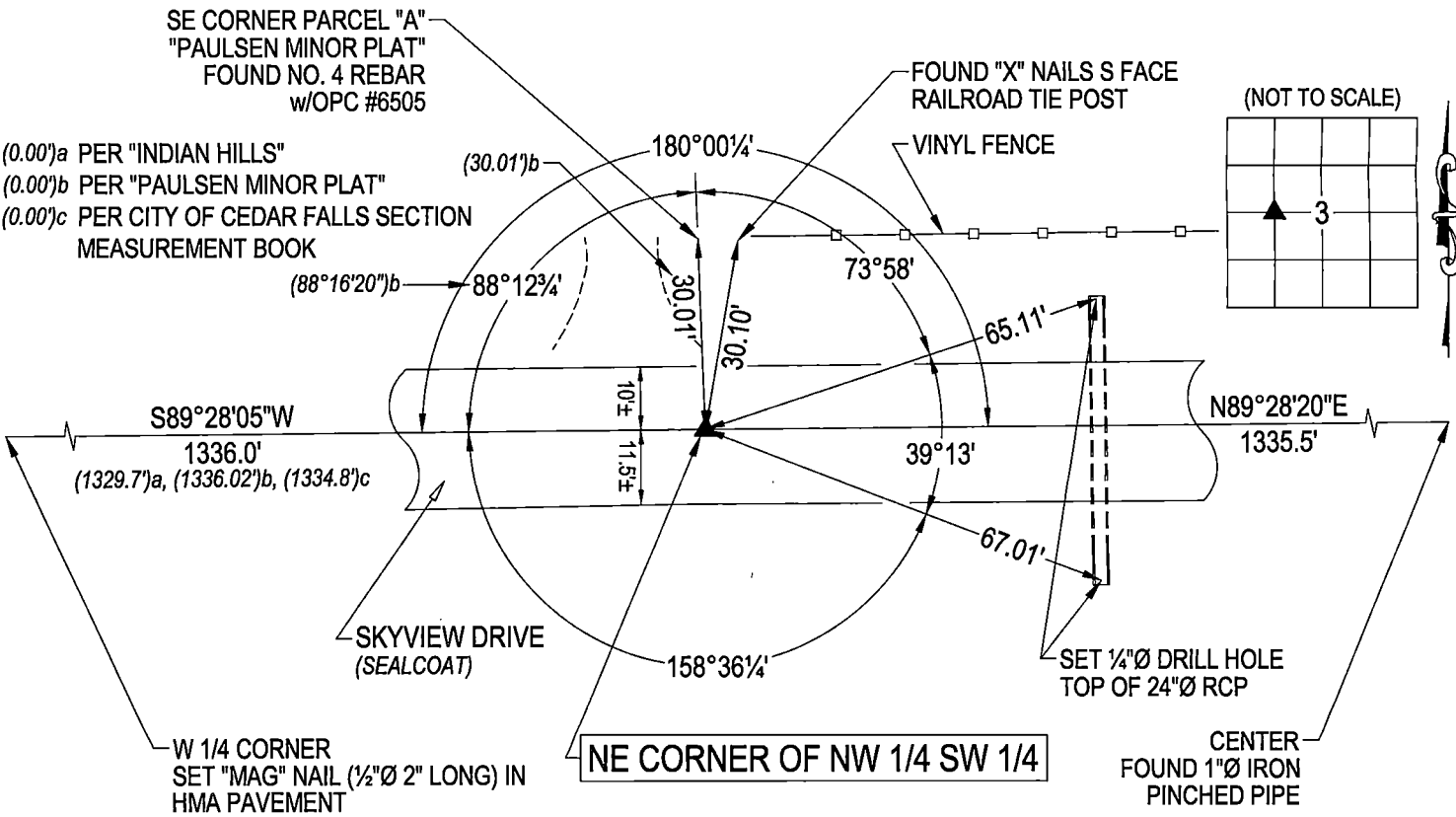
OF
LAND SURVEY MONUMENTS SITUATED IN SECTION NO. 3, TOWNSHIP NO. 89 NORTH, RANGE NO. 14
WEST OF THE FIFTH PRINCIPAL MERIDIAN, BLACK HAWK COUNTY, IOWA.
PREVIOUSLY RECORDED IN _____ N/A

(Show reason for preparing this certificate, the evidence and detail procedures used in establishing the corner positions and monumentation found or placed.)
MONUMENT DESCRIPTION AND REMARKS: THERE IS NO USPLSCC ON FILE. UTILIZED CORNER TO HELP VERIFY POSITION OF W 1/4 CORNER SEC. 3 AS UNION ROAD OVERLAYED WITH HMA BY THE CITY OF CEDAR FALLS (PROJECT NO. RC-000-3185).

NE CORNER OF NW 1/4 SW 1/4: NO BLACK HAWK COUNTY ENGINEER REFERENCE TIES AVAILABLE. "INDIAN HILLS" DATED 05/17/1962 SHOWS MONUMENT AT CORNER, BUT DOES NOT STATE WHAT IT IS. "PAULSEN MINOR PLAT" DATED 11/16/1994 RECORDED IN 314 MISC. 84 CALLS FOR [FOUND BENT PIPE, SET PIN AT ORIGINAL LOCATION]. EXCAVATED AT MAGNETIC DETECTION FOUND NO. 4 REBAR ON ITS SIDE 6± DEEP (DID NOT UTILIZE). SET "MAG" NAIL (1/2"Ø HEAD x 2" LONG) IN SEALCOAT AT THE BEST FIT BETWEEN THE W 1/4 CORNER AND THE SE CORNER OF SAID "PAULSEN MINOR PLAT" (FOUND NO. 4 REBAR w/OPC #6505).

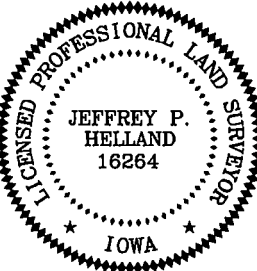
PLAN VIEW

(Show a minimum of three reference ties to durable physical objects, relevant monuments and physical conditions that will enable recovery of the corner.)



DEPARTMENT OF PUBLIC WORKS, ENGINEERING DIVISION
CITY OF CEDAR FALLS, IOWA
220 CLAY ST.
CEDAR FALLS, IOWA
50613
(319) 273-8606

OPC = PLASTIC CAP (O=ORANGE,R=RED,Y=YELLOW)
DRAWN BY: JPH
FILE NAME: UNION ROAD-USPLSCC-51.dwg
(00') RECORDED AS



I hereby certify that this land surveying document was prepared and the related survey work was performed by me or under my direct personal supervision and that I am a duly licensed Land Surveyor under the laws of the State of Iowa.
Jeffrey P. Helland Date: 1/05/21
Jeffrey P. Helland, L.S. Iowa License No. 16264
My license renewal date is December 31, 2021.
All Pages or Sheets are covered by this Seal except:

LIST CORNERS TO BE INDEXED

CORNER	SECTION	TOWNSHIP	RANGE
NE COR. NW 1/4 SW 1/4	3	89N	14W
SE COR. SW 1/4 NW 1/4	3	89N	14W
SW COR. SE 1/4 NW 1/4	3	89N	14W
NW COR. NE 1/4 SW 1/4	3	89N	14W