



Doc ID: 005231530001 Type: GEN  
Kind: CORNER  
Recorded: 07/31/2013 at 11:26:44 AM  
Fee Amt: \$7.00 Page 1 of 1  
Black Hawk County Iowa  
JUDITH A MCCARTHY RECORDER

File 2014-00002338

XEN

WAYNE CLAASSEN ENGINEERING AND SURVEYING, INC.  
P.O. BOX 898 WATERLOO, IOWA 50704-0898

PHONE: (VOICE) 319-235-6294  
(FAX) 319-235-0028

## UNITED STATES PUBLIC LAND SURVEY CORNER CERTIFICATE

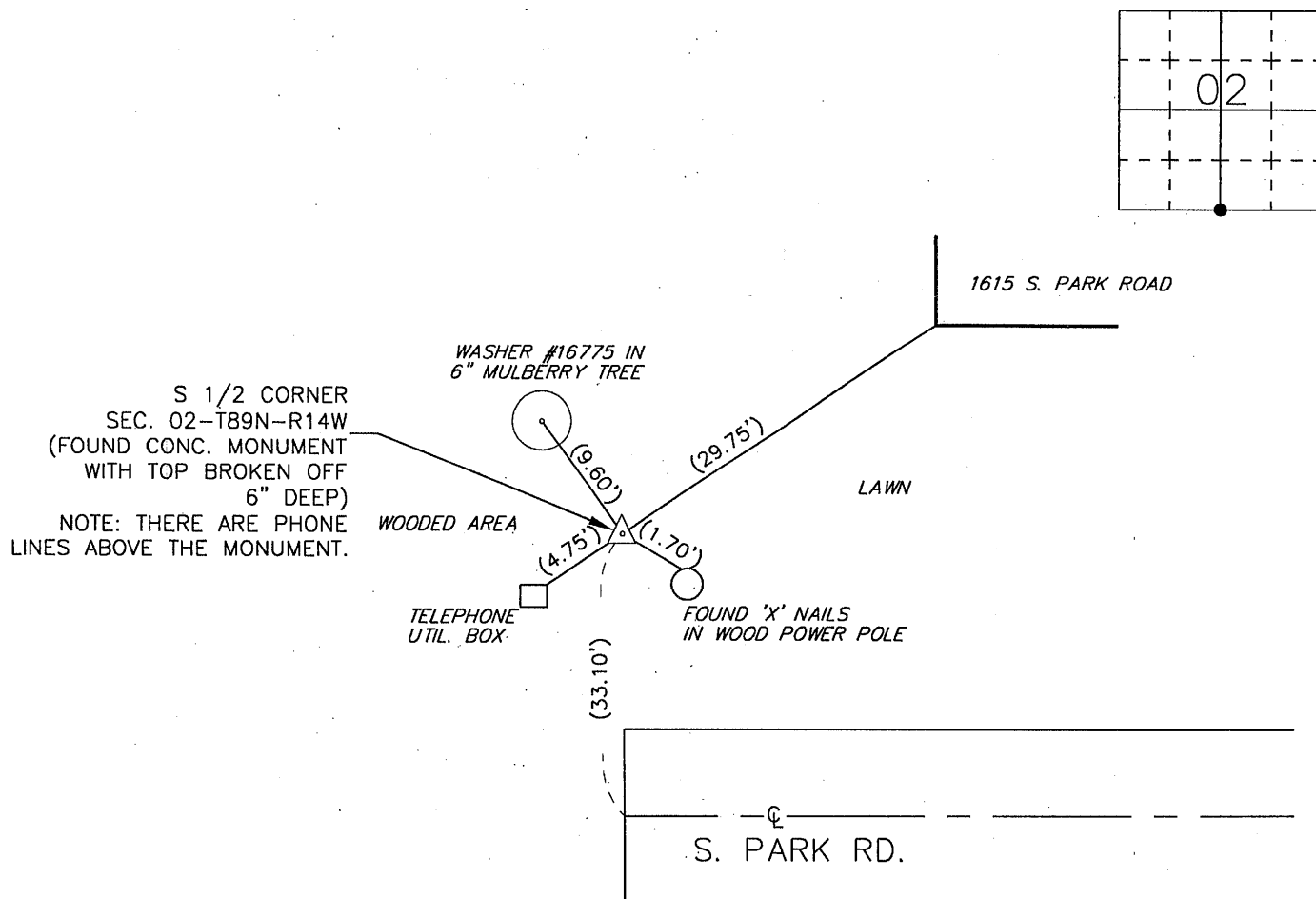
Land Survey Monuments situated in Section 02, Township 89 North, Range 14 West, of the Fifth Principal Meridian, Black Hawk County, Iowa.

Previously recorded in N/A in County Recorder's Office.  
(book, page, document number, etc.)

### Monument Description and Remarks

The following note was found in the Black Hawk County Engineer's Office WPA notes dated 11-20-1940: "Found limestone pieces on E. side of E. face Corner post & 2637.8' from NE 11-89-14 according to Cedar Falls city Engineer's records. Best cluster of limestone on E. side of cor post. Land owner said corner was at that point. S.C.M. flush." Oak Hill Addition, dated June 19, 1950, shows this section corner at Southwest corner of Lot 29. This subdivision plat also indicates there was "steel stake found" at this corner (no "steel stake" was found). Found concrete monument with top broken off under telephone wires. This certificate is being filed because there is no certificate on file.

### PLAN - VIEW



BK 720, PG. 14

I hereby certify that this land surveying document was prepared and the related survey work was performed by me or under my direct personal supervision and that I am a duly Licensed Land Surveyor under the laws of the State of Iowa.

Signature: David L. Scheil

David L. Scheil, L.S.

Date: July 30, 2013 Lic. No. 16775

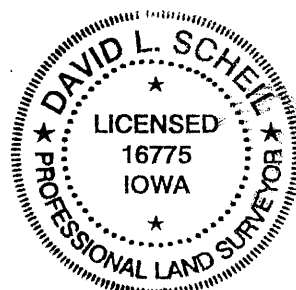
Pages or Sheets Covered by this Seal: THIS SHEET ONLY.

My license renewal date is December 31, 2014

SEAL

### List Corners to be Indexed

Corners	Section	Twp	Range
S 1/4 CORNER	02	89 N	14 W



(7.00)