

INDEX  
MARGIN  
PROOF  
COMPARE

BLACK HAWK COUNTY IOWA:SS 020768

Filed for record JAN 31, 2002 at  
11:30 A. M. and recorded in Book  
of \_\_\_\_\_ page \_\_\_\_\_

*Dennis R. Prange*

Recorder

FEE 1-5.00/

PRANGE SURVEYING

3304 PANTHER LN

CEDAR FALLS IA 50613

Prepared by Dennis R. Prange, L.S., Prange Surveying, 3304 Panther Lane, Cedar Falls, Iowa 50613, (319) 277-4935

## UNITED STATES PUBLIC LAND SURVEY CORNER CERTIFICATE OF

Land Survey Monuments situated in Section No. 1, Township No. 89 North, Range  
No. 14 West, of the Fifth Principal Meridian, Black Hawk County, Iowa.  
Previously recorded in Book N/A on Page N/A in the office of the County Recorder.  
(book, page, document number, etc.)

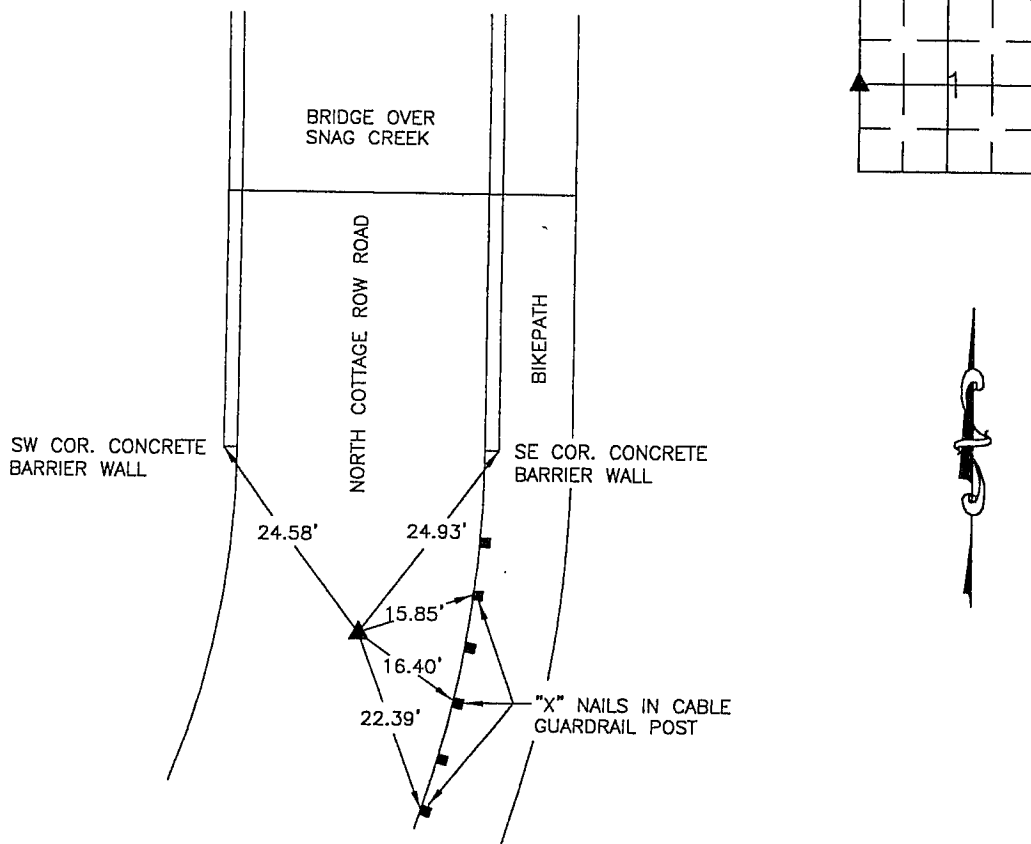
(Show reason for preparing this certificate, the evidence and detailed procedures used in establishing the corner positions and  
monumentation found or placed.)

Monument Description and Remarks: Found cross cut in concrete

### PLAN - VIEW

(Show a minimum of three reference ties to durable physical objects, relevant monuments and physical conditions that will enable  
recovery of the corner.)

NOT TO SCALE

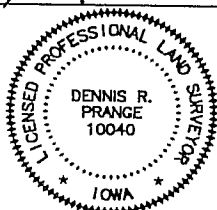


I hereby certify that this land surveying document was prepared  
by me or under my direct personal supervision and that I am  
a duly licensed Professional Land Surveyor under the laws of  
the State of Iowa.

Signed: Dennis R. Prange  
Dennis R. Prange, L.S. Iowa License No. 10040

Date: January 21, 2002

SEAL



My License renewal date is December 31, 2002.  
Pages or sheets covered by this seal : this page only

Corners	List Corners to be Indexed Section	Twp	Range
W1/4 COR.	1	89	14

Drawn by: DRP

Checked by: DRP

BOOK 0345 PAGE 522