

Doc ID: 004500810001 Type: GEN
Kind: CORNER
Recorded: 06/23/2011 at 09:01:27 AM
Fee Amt: \$9.00 Page 1 of 1
Black Hawk County Iowa
JUDITH A MCCARTHY RECORDER
File 2011-00024081

Env

WAYNE CLAASSEN ENGINEERING AND SURVEYING, INC.
P.O. BOX 898 WATERLOO, IOWA 50704-0898

PHONE: (VOICE) 319-235-6294
(FAX) 319-235-0028

UNITED STATES PUBLIC LAND SURVEY CORNER CERTIFICATE

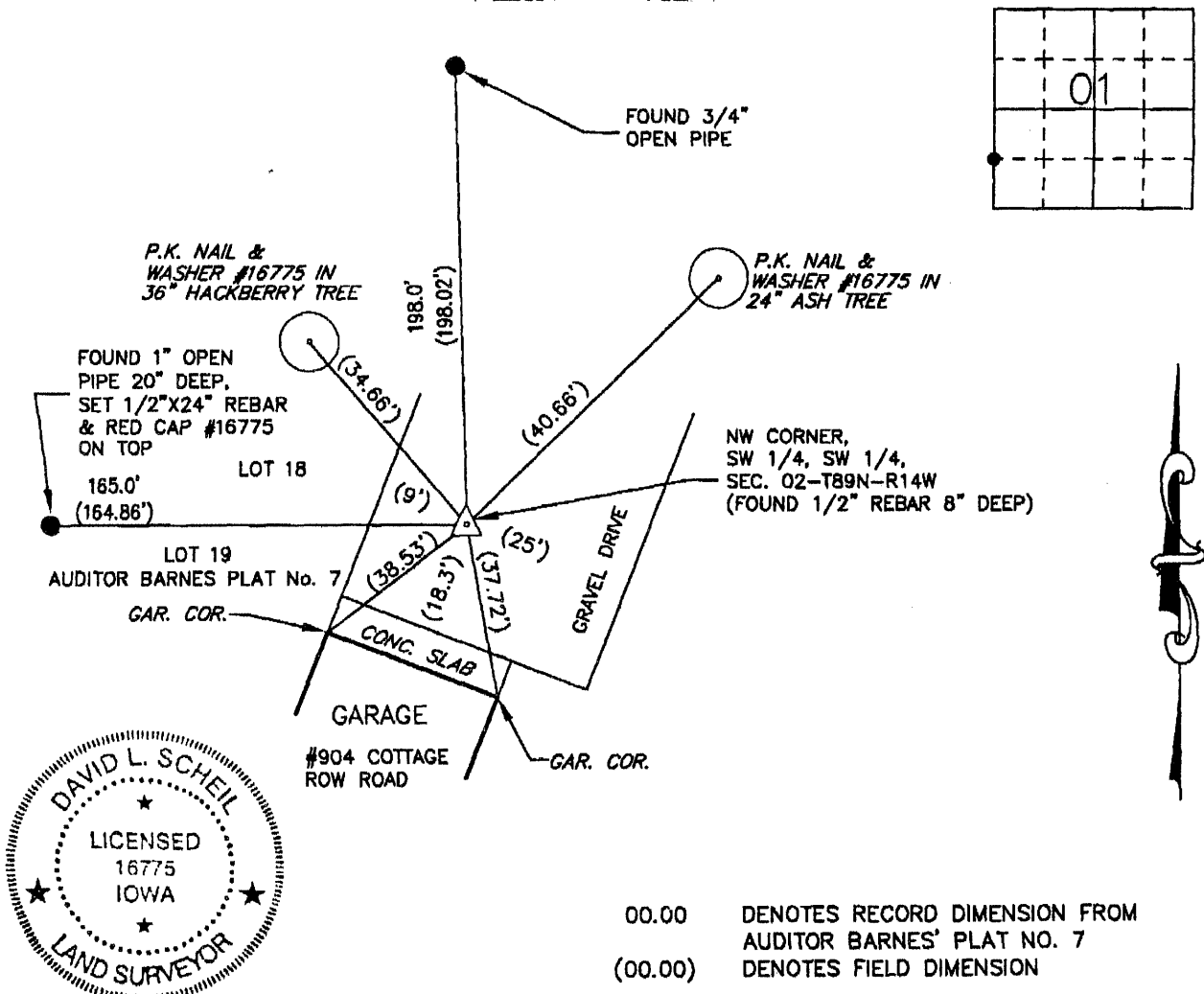
Land Survey Monuments situated in Section 01, Township 89 North, Range 14 West, of the Fifth Principal Meridian, Black Hawk County, Iowa.

Previously recorded in _____ in County Recorder's Office.
(book, page, document number, etc.)

Monument Description and Remarks

Found 1/2" rebar 8" deep as per ties from "Auditor Barnes' Plat No. 7 in Black Hawk County, Iowa". This certificate was filed because there is no certificate on file.

PLAN - VIEW



BK 673-32

I hereby certify that this land surveying document was prepared and the related survey work was performed by me or under my direct personal supervision and that I am a duly Licensed Land Surveyor under the laws of the State of Iowa.

Signature: _____

David L. Schell, L.S.

Date: JUNE 21, 2011 Lic. No. 16775

Pages or Sheets Covered by this Seal: THIS SHEET ONLY.

My license renewal date is December 31, 2012

SEAL

List Corners to be Indexed

Corners	Section	Twp	Range
NW CORNER, SW 1/4, SW 1/4,	01	89 N	14 W
NE CORNER, SE 1/4, SE 1/4,	02	89 N	14 W

(9.00)