

Reserved for County Recorder's use.

Doc ID: 009448590001 Type: GEN
Recorded: 12/13/2018 at 01:51:40 PM
Fee Amt: \$7.00 Page 1 of 1
Black Hawk County Iowa
SANDIE L. SMITH RECORDER
File **2019-00009213**

Kyle J. Helland, 1107 Technology Parkway, Cedar Falls, Iowa 50613-6951, (319)-266-0161

UNITED STATES PUBLIC LAND SURVEY CORNER CERTIFICATE
OF

LAND SURVEY MONUMENTS SITUATED IN SECTION NO. 1, TOWNSHIP NO. 89 NORTH, RANGE
NO. 14 WEST OF THE FIFTH PRINCIPAL MERIDIAN, BLACK HAWK COUNTY, IOWA.
PREVIOUSLY RECORDED IN FEE BOOK # 2006-4464.

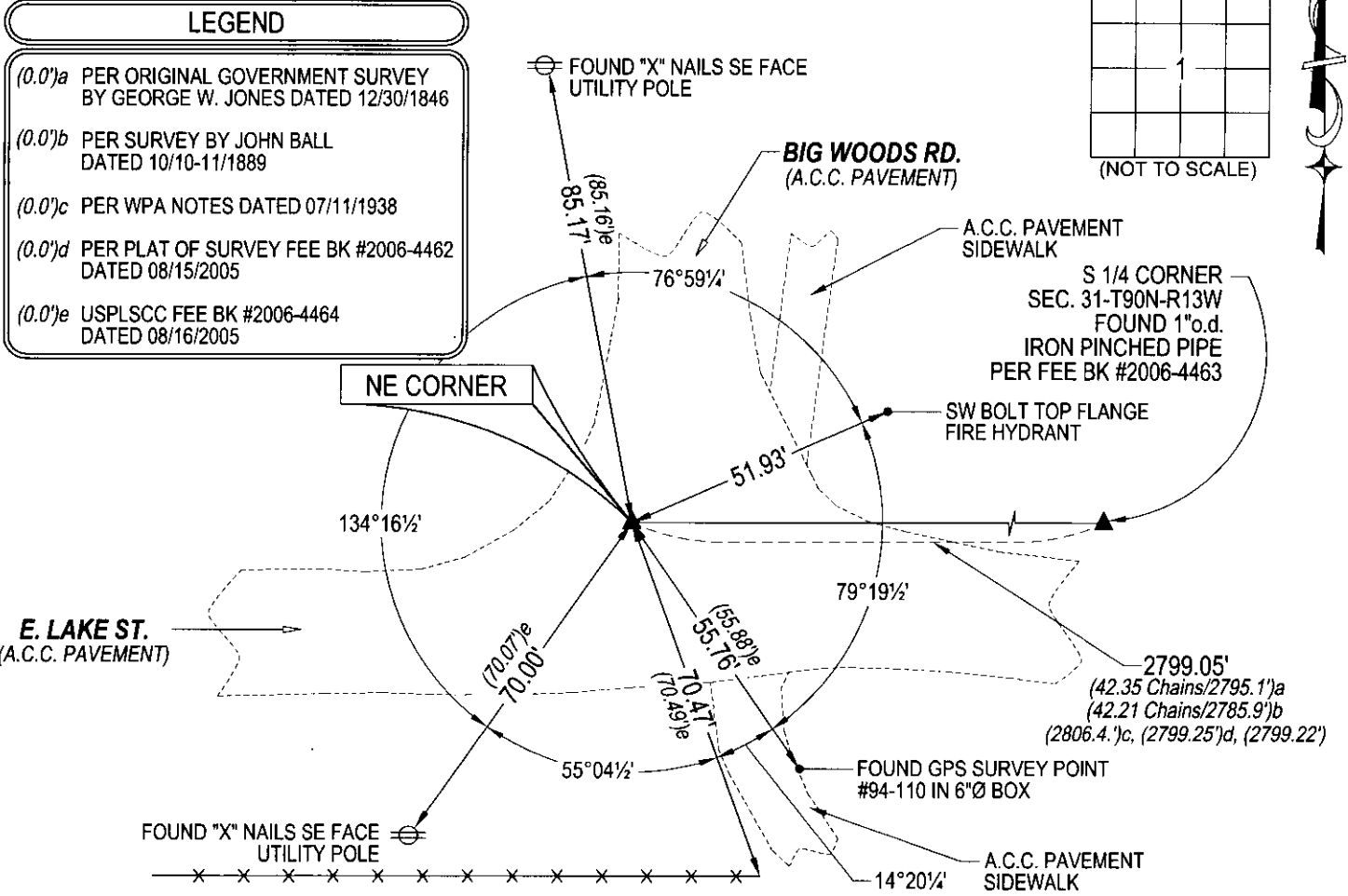
(SHOW REASON FOR PREPARING THIS CERTIFICATE, THE EVIDENCE AND DETAILED PROCEDURES USED IN ESTABLISHING THE
CORNER POSITIONS AND MONUMENTATION FOUND OR PLACED.)

MONUMENT DESCRIPTION AND REMARKS:
MONUMENTATION HAS CHANGED. SURVEY COMPLETED IN THE SW 1/4 OF SEC. 31-T90N-R13W.

NE CORNER: SURVEY BY JOHN BALL DATED 10/10-11/1889 CALLS FOR [STONE]. USPLSCC FEE BOOK # 2006-4464 DATED
08/16/2005 CALLS FOR [NO CERTIFICATE ON FILE. USED IDOT CORNER STONE SURVEY TO CHECK CORNER FOUND. FND.
RR. SPIKE 4" DEEP IN ASPHALT]. SEARCHED AREA FOUND "MAG" NAIL w/METAL WASHER IN A.C.C. PAVEMENT.

PLAN VIEW

(SHOW A MINIMUM OF THREE REFERENCE TIES TO DURABLE PHYSICAL OBJECTS, RELEVANT MONUMENTS AND PHYSICAL
CONDITIONS THAT WILL ENABLE RECOVERY OF THE CORNER.)



(BEARINGS ARE ASSUMED)



HELLAND ENGINEERING & SURVEYING, LTD.
1107 Technology Parkway
Cedar Falls, Iowa 50613-6955
(319)-266-0161

SHINER = 4d. NAIL & 1 5/16"Ø METAL SHINER
BRASS TAG = 4d. NAIL & 13/16"Ø BRASS TAG
OPC = PLASTIC CAP (O=ORANGE, R=RED, Y=YELLOW)
(00) RECORDED AS
DRAWN BY: CDR
FILE NAME: 18-252-25.DWG



I hereby certify that this land surveying document was prepared
and the related survey work was performed by me or under my
direct personal supervision and that I am a duly licensed
Professional Land Surveyor under the laws of the State of Iowa.
Kyle J. Helland 12/4/2018
License Number 23212
My license renewal date is December 31, 2019.
All pages or sheets are covered by this seal except:

LIST CORNERS TO BE INDEXED			
CORNER	SECTION	TOWNSHIP	RANGE
NE CORNER	1	89N	14W
SE CORNER	36	90N	14W
SW CORNER	31	90N	13W
NW CORNER	6	89N	13W

File Number: 2019-00009213 Seq: 1