

Doc ID: 004916010001 Type: GEN
Kind: CORNER
Recorded: 09/21/2012 at 10:37:53 AM
Fee Amt: \$7.00 Page 1 of 1
Black Hawk County Iowa
JUDITH A MCCARTHY RECORDER
File **2013-00005899**

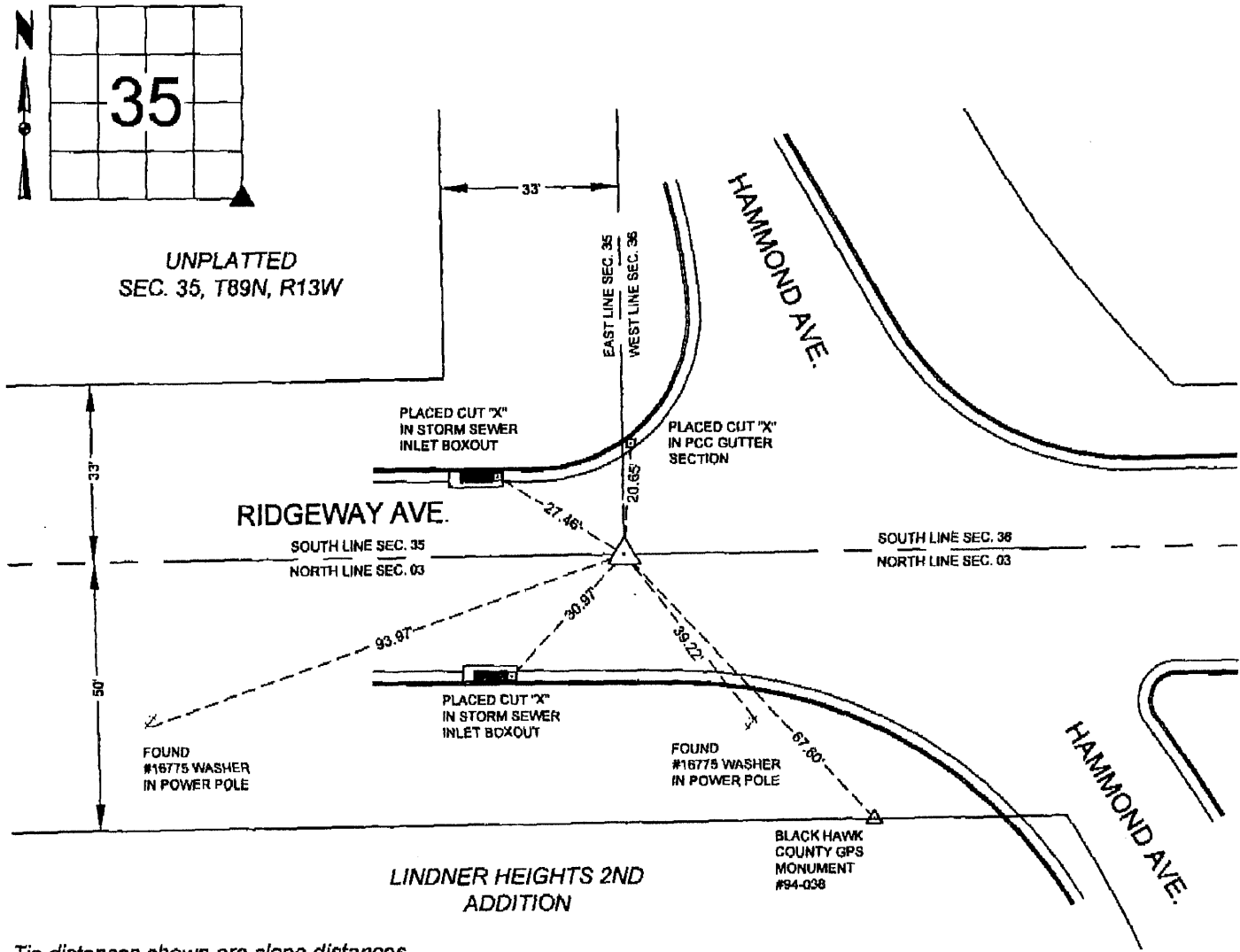
William W. Castle, PLS, City of Waterloo Engineering Department, 715 Mulberry Street, Waterloo, Iowa 50703 Phone: (319) 291-4312

UNITED STATES PUBLIC LAND SURVEY CORNER CERTIFICATE
Land Survey Monuments situated in Section 35, Township 89 North, Range 13 West,
of the Fifth Principal Meridian, Black Hawk County, Iowa.
Previously recorded in DOC. # 2008 025416 in the Black Hawk County Recorder's Office.
(book, page, document number, etc.)

Monument description and remarks:
Existing monument was destroyed in September 2012 during reconstruction of the Ridgeway Avenue and Hammond Avenue intersection as part of the City of Waterloo's FY2013 Street Reconstruction Program, Contract #819.
Prior to road reconstruction, found mag nail and washer #16775 as per United State Public Land Survey Corner Certificate on file in the Black Hawk County Recorder's Office.
Set mag nail and 2" dia. aluminum washer "SEC COR - IA PLS #19715" at previously determined location.

PLAN VIEW

Show a minimum of three reference ties to durable physical objects, relevant monuments and physical conditions that will enable recovery of the corner.



Tie distances shown are slope distances.

	<p>I hereby certify that this surveying document was prepared and the related survey work was performed by me or under my direct personal supervision and that I am a duly licensed Land Surveyor under the laws of the State of Iowa.</p> <p><i>William W. Castle</i> 9/13/2012 William W. Castle, PLS Date License Number 19715 My License Renewal Date is December 31, 2015. Pages or sheets covered by this seq: <u>1/1</u></p>	List corners to be indexed			
		Corners	Section	Twp	Range
	SE	35	89	13	
City of Waterloo Engineering Department 715 Mulberry Street, Waterloo, Iowa 50703 Phone: (319) 291-4312 Fax: (319) 291-4262		Drawn By: WWC Scale: 1" = 40' Field Work Date: 9/11/2012 Date Drawn: 9/13/2012		Sheet No. 1 of 1	