

WAYNE CLAASSEN ENGINEERING AND SURVEYING, INC.  
P.O. BOX 898 WATERLOO, IOWA 50704-0898

# UNITED STATES PUBLIC LAND SURVEY CORNER CERTIFICATE

Land Survey Monuments situated in Section 35, Township 89 North, Range 13 West, of the Fifth Principal Meridian, Black Hawk County, Iowa.

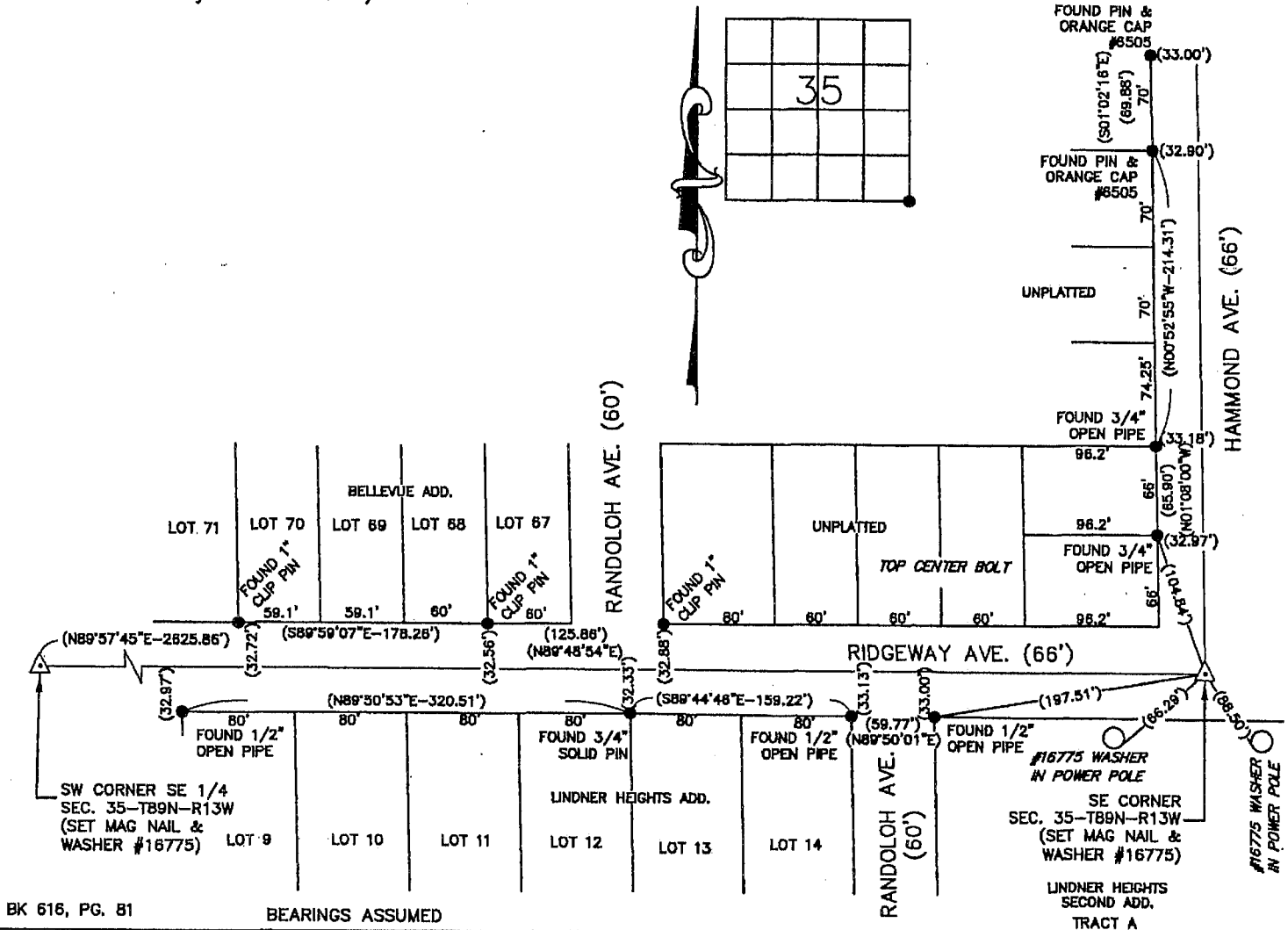
Previously recorded in \_\_\_\_\_ in County Recorder's Office.  
(book, page, document number, etc.)

## Monument Description and Remarks

MAY 25, 1938 - WPA NOTES SHOW "FOUND LIMESTONE 28"x9"x4"..... SET C.M. 12" DEEP." ALL TIES HAVE BEEN OBLITERATED.  
JUNE 1947 - SCHENK ENGINEERING PLAT OF SURVEY IN MISC. BOOK 50, PG. 609 SHOWS SE 1/4 SEC. 35-89-13. SHOWS SE CORNER OF SEC. 35-89-13 BUT DOES NOT SHOW ANYTHING FOUND.  
JUNE 1955 - "LINDNER HEIGHTS ADD." SHOWS RECORD DIMENSION OF 340.0' TO THE NE. CORNER OF SEC. 03-88-13 AND RECORD DIMENSION 145.2' BACK TO INTERSECTION OF CENTERLINES OF HAMMOND AVE. AND RIDGEWAY AVENUE.  
MARCH 11, 1959 - SCHENK ENGINEERING PLAT OF SURVEY IN MISC. BOOK 117, PAGE 89 SHOWS FOUND SE. CORNER OF SEC. 35-89-13 AT CENTERLINES OF HAMMOND AVE. AND RIDGEWAY AVENUE.  
MARCH 30, 1983 PLAT OF SURVEY IN MISC. BOOK 250, PAGE 49 SHOWS SE. COR. OF SEC. 35-89-13. BUT, DOES NOT SHOW WHAT WAS FOUND.  
SET MAG NAIL AND WASHER #16775 INTERSECTION OF CENTERLINES OF HAMMOND AVE. AND RIDGEWAY AVENUE BASED UPON FOUND PINS AS SHOWN.  
THIS CERTIFICATE WAS FILED BECAUSE THERE IS NO CERTIFICATE ON FILE.

## PLAN - VIEW

(Show a minimum of three reference ties to durable physical objects, relevant monuments and physical conditions that will enable recovery of the corner.)



BK 616, PG. 81

BEARINGS ASSUMED

I hereby certify that this land surveying document was prepared and the related survey work was performed by me or under my direct personal supervision and that I am a duly Licensed Land Surveyor under the laws of the State of Iowa.

Signature: David L. Schell

David L. Schell, L.S.

Date: JUNE 17, 2008 Lic. No. 16775

Pages or Sheets Covered by this Seal: THIS SHEET ONLY.

My license renewal date is December 31, 2008

SEAL

## List Corners to be Indexed

Corners	Section	Twp	Range
SE CORNER,	35	89 N	13 W

