

WAYNE CLAASSEN ENGINEERING AND SURVEYING, INC.
P.O. BOX 898 WATERLOO, IOWA 50704-0898

PHONE: (VOICE) 319-235-6294
(FAX) 319-235-0028

UNITED STATES PUBLIC LAND SURVEY CORNER CERTIFICATE

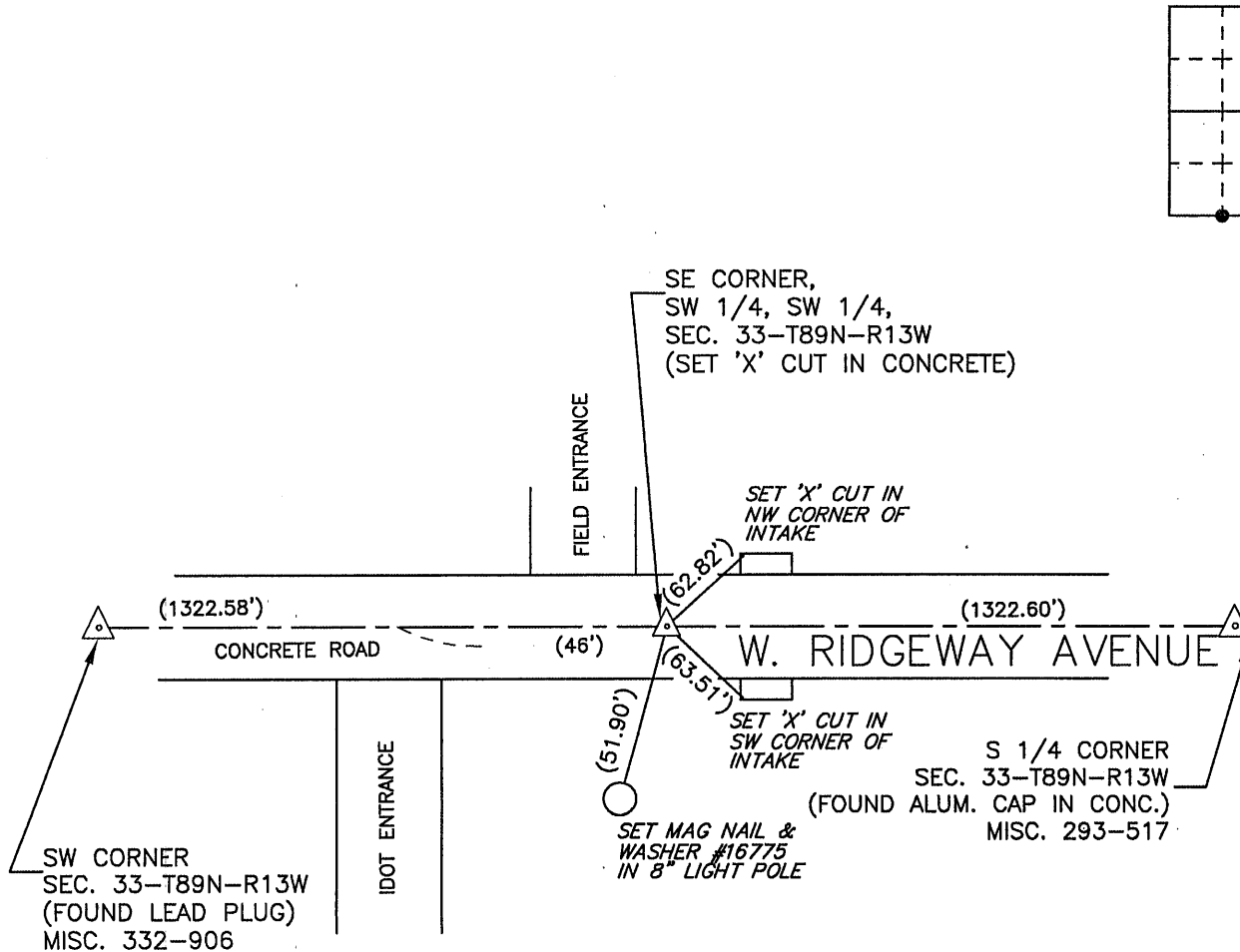
Land Survey Monuments situated in Section 33, Township 89 North, Range 13 West, of the Fifth Principal Meridian, Black Hawk County, Iowa.

Previously recorded in _____ in County Recorder's Office.
(book, page, document number, etc.)

Monument Description and Remarks

No ties in the Black Hawk County Engineer's Office. Set 'X' cut in concrete pavement at the midpoint between the South 1/4 corner and the Southwest corner of this section. This certificate was filed because there is no certificate on file.

PLAN - VIEW



719-06

I hereby certify that this land surveying document was prepared and the related survey work was performed by me or under my direct personal supervision and that I am a duly Licensed Land Surveyor under the laws of the State of Iowa.

Signature: _____

David L. Scheil, L.S.

Date: SEPT 13, 2013 Lic. No. 16775

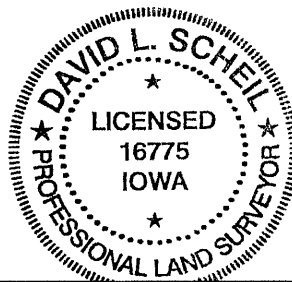
Pages or Sheets Covered by this Seal: THIS SHEET ONLY.

My license renewal date is December 31, 2014

SEAL

List Corners to be Indexed

Corners	Section	Twp	Range
SE CORNER,	33	89 N	13 W
SW 1/4, SW 1/4,			



7.00453