

ENV WAYNE CLAASSEN ENGINEERING

WAYNE CLAASSEN ENGINEERING AND SURVEYING, INC.  
P.O. BOX 898 WATERLOO, IOWA 50704-0898

PHONE: (VOICE) 319-235-6294  
(FAX) 319-235-0028

UNITED STATES PUBLIC LAND SURVEY CORNER CERTIFICATE

Land Survey Monuments situated in Section 33, Township 89 North, Range 13 West, of the Fifth Principal Meridian, Black Hawk County, Iowa  
Previously recorded in in County Recorder's Office  
(book, page, document number, etc.)

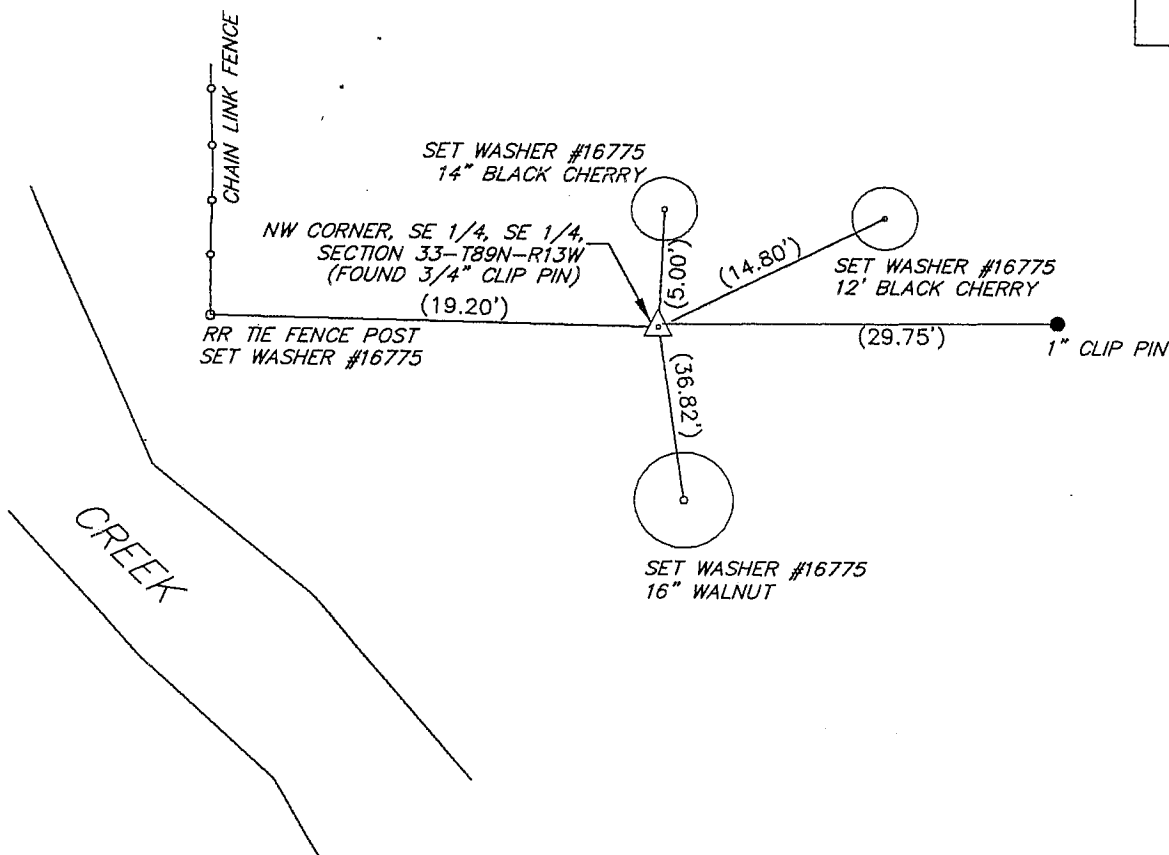
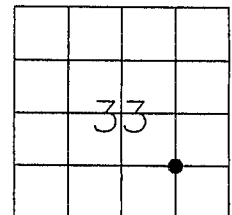
(Show reason for preparing this certificate, the evidence and detailed procedures used in establishing the corner positions and monumentation found or placed.)

Monument Description and Remarks No corner certificate on file.

Northwest corner, SE 1/4, SE 1/4. Found 3/4" clip pin at Southeast corner of Plat of Martin Heights.

PLAN - VIEW

(Show a minimum of three reference ties to durable physical objects, relevant monuments and physical conditions that will enable recovery of the corner.)



Field Book: 600-19

I hereby certify that the survey work was completed and this certificate was prepared by me or under my direct personal supervision and that I am a duly licensed land surveyor under the laws of the state of Iowa.

Signature: David L. Scheil, L.S.

Date: June 14, 2004 Lic. No. 16775

My license renewal date is December 31, 2004

SEAL

List Corners to be Indexed

Corners	Section	Twp	Range
NW Corner, SE 1/4, SE 1/4	33	89 N	13 W

