

County:	Black Hawk
Section(s):	33 Township: 89 N Range: 13 W
Corner(s):	Southeast Corner
Requestor:	City of Waterloo
Proprietor:	City of Waterloo
Surveyor:	William W. Castle
Surveyor Company:	City of Waterloo Engineering Department 715 Mulberry Street, Waterloo, IA 50703
Return To:	715 Mulberry St, Waterloo, IA 50703 291-4312

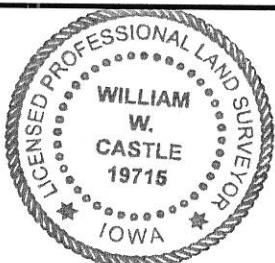
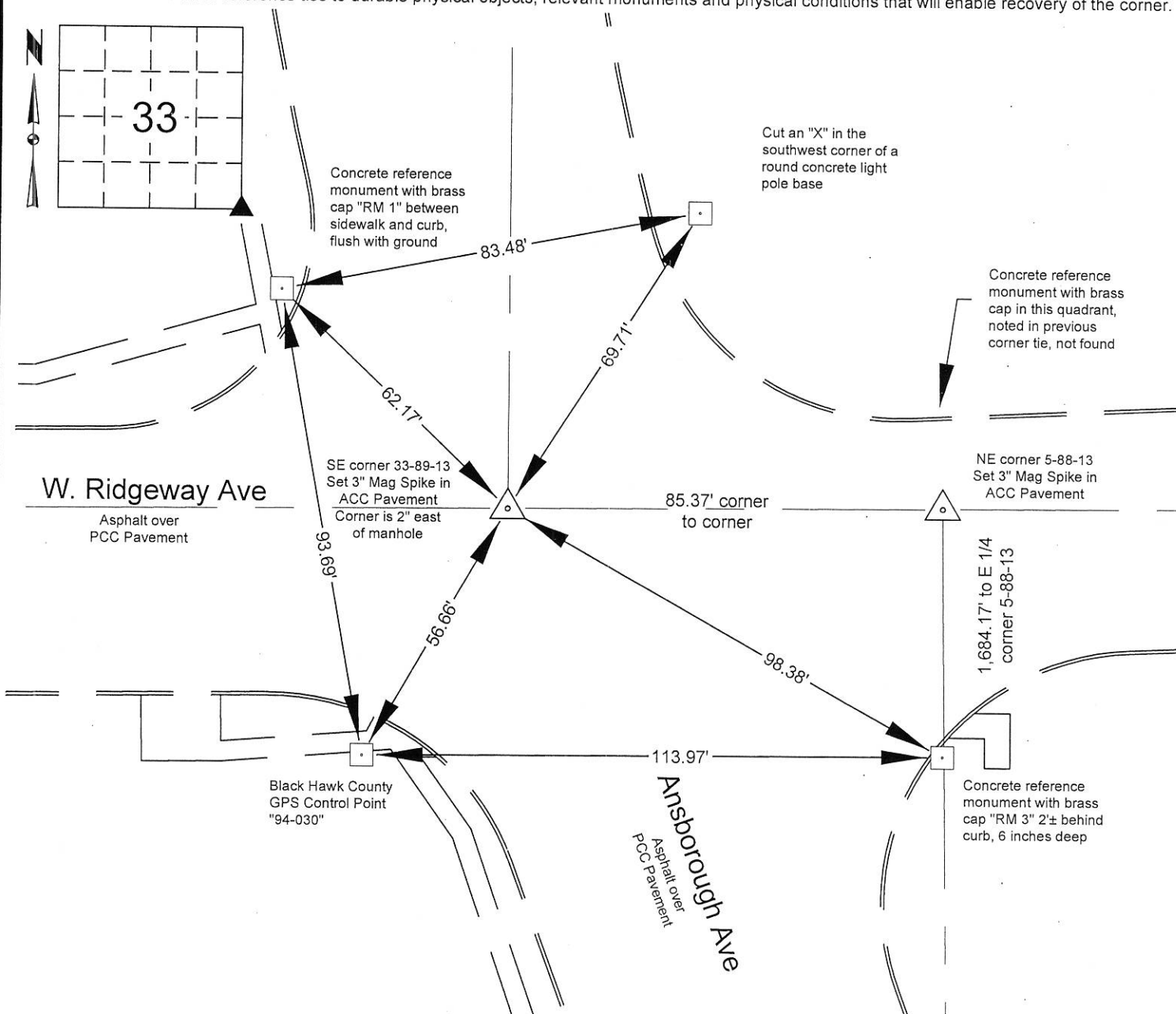
Doc ID: 009697280001 Type: GEN
Recorded: 11/06/2019 at 03:46:13 PM
Fee Amt: \$7.00 Page 1 of 1
Black Hawk County Iowa
SANDIE L. SMITH RECORDER
File **2020-00008450**

Land Survey Monument situated in Section 33, Township 89 North, Range 13 West, of the Fifth Principal Meridian, Black Hawk County, Iowa.

Previously recorded in Misc 295 Pg 956 in the Black Hawk County Recorder's Office.

Reason for preparing this certificate, the evidence and detailed procedures used in establishing the corner position, and monumentation found or placed. Existing pavement overlain with 3" of asphalt as part of City of Waterloo FY2019 Asphalt Overlay Program, Contract No. 964. Prior to construction, found 3" aluminum disc in concrete pavement placed as part of the Ansborough Avenue reconstruction project, contract no. 362. After construction, set 3" mag spike at corner using project controls.

Show a minimum of three reference ties to durable physical objects, relevant monuments and physical conditions that will enable recovery of the corner.



I hereby certify that this surveying document was prepared and the related survey work was performed by me or under my direct personal supervision and that I am a duly licensed Land Surveyor under the laws of the State of Iowa.

William W. Castle, PLS

My License Renewal Date is December 31, 2019.

Pages or sheets covered by this seal :

11/4/2019
Date

List corners to be indexed

Corners	Section	Twp	Range
SE	33	89	13

City of Waterloo Engineering Department
715 Mulberry Street, Waterloo, Iowa 50703
Phone: (319) 291-4312 Fax: (319) 291-4262

Drawn By: WWC Scale: none
Field Work Date: 7/29/19 & 10/23/19
Date Drawn: 10-25-2019

Sheet No.
1 of 1