

INS

P

Z

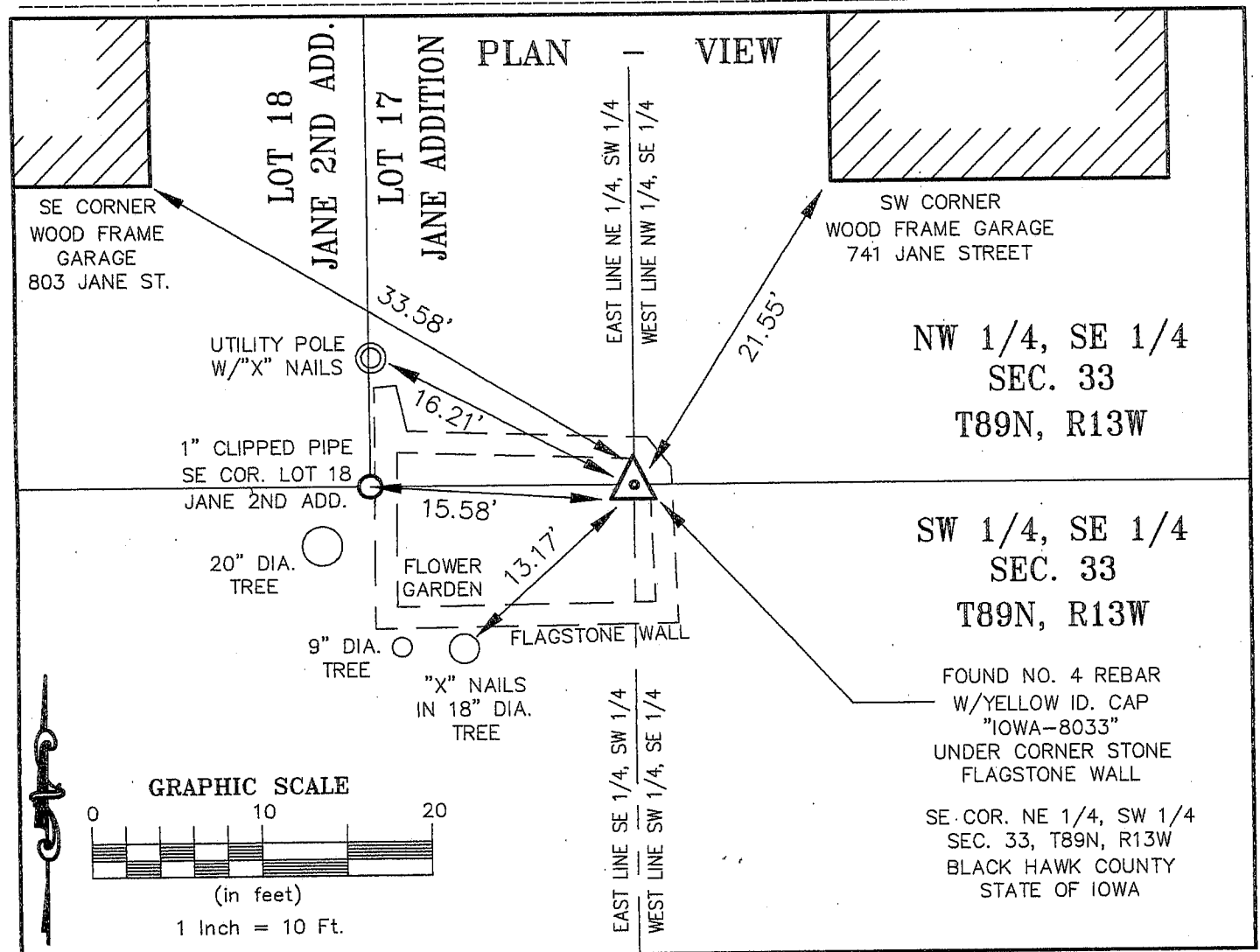
Document Number: 2007014792  
 Date: Jan 04, 2007 4:30:00 pm  
 Aud Fee: 0.00 Rec Fee: 5.00  
 Trans Tax: 0.00 Rec Management Fee: 1.00  
 E-Com Fee: 1.00 Non-Standard Page Fee: 0.00  
 Filed for record in Black Hawk County, Iowa  
 Judith A. McCarthy, County Recorder  
 Refund: 2.00

Kirk D. Eschliman, P.L.S. Iowa Lic. No. 9961, 723 Broadway Street, Waterloo, Iowa 50703 - Phone: 319-234-0509

# UNITED STATES PUBLIC LAND SURVEY CORNER CERTIFICATE OF

LAND SURVEY MONUMENTS SITUATED IN SECTION THIRTY-THREE (33), TOWNSHIP EIGHTY-NINE (89) NORTH  
 RANGE THIRTEEN (13) WEST, OF THE FIFTH PRINCIPAL MERIDIAN, BLACK HAWK COUNTY, IOWA.  
 PREVIOUSLY RECORDED IN (NOT PREVIOUSLY RECORDED) (BOOK, PAGE, DOCUMENT NUMBER, ETC.) IN THE COUNTY RECORDER'S OFFICE.

(SHOW REASON FOR PREPARING THIS CERTIFICATE, THE EVIDENCE AND DETAILED PROCEDURES USED IN ESTABLISHING THE CORNER POSITIONS AND MONUMENTATION FOUND OR PLACED.)  
 MONUMENT DESCRIPTION AND REMARKS: CURRENT SECTION CORNER CERTIFICATE NOT ON FILE IN THE BLACK HAWK  
COUNTY RECORDER'S OFFICE. FOUND NO. 4 REBAR WITH YELLOW ID. CAP "IOWA-8033", UNDER  
FLAGSTONE CORNER SLAB OF DECORATIVE FLOWER-GARDEN WALL. ORIGINAL MONUMENT SET BY WAYNE CLAASEN,  
PER SUBDIVISION PLAT DATED NOVEMBER 17, 1971. MONUMENT RESET BY F. WILLIAM KING, PER DOC. NO.  
2003-27008, DATED MARCH 19, 2003. MONUMENT USED IN REFERENCED FIELD SURVEY.



I HEREBY CERTIFY THAT THIS LAND SURVEYING DOCUMENT WAS PREPARED AND RELATED SURVEY WORK WAS PERFORMED BY ME OR UNDER MY DIRECT PERSONAL SUPERVISION AND THAT I AM A DULY LICENSED LAND SURVEYOR UNDER THE LAWS OF THE STATE OF IOWA.

*[Signature]* DATE: 01/03/2007  
 KIRK D. ESCHLIMAN, P.L.S. IOWA LIC. NO. 9961  
 MY LICENSE RENEWAL DATE IS DECEMBER 31, 2007  
 PAGES OR SHEETS COVERED BY THIS SIGNATURE & SEAL: SHEET 1 OF 1

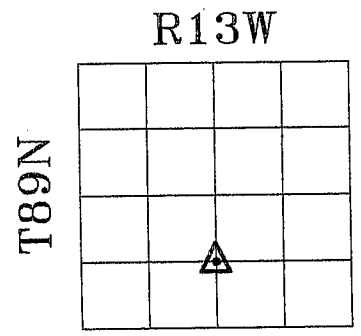
FOR: FIRST ASSEMBLY OF GOD  
 745 APRIL STREET  
 WATERLOO, IOWA 50701  
 REQ. BY: KENNY PHILLIPS  
 WATERLOO, IOWA



**KESS & ASSOCIATES, INC.**  
 PROFESSIONAL LAND SURVEYORS : 723 BROADWAY, WATERLOO, IOWA 50703-5811  
 DATE: 01/03/2007 C.A.D.D. FILE: 05C09SCC1.DWG PROJECT NO.: 05C09

List of corners to be indexed:

Corner	Section	Township	Range
SE COR.	33	T89N	R13W
NE 1/4, SW 1/4			



SECTION 33