

WAYNE CLAASSEN ENGINEERING AND SURVEYING, INC.
P.O. BOX 898 WATERLOO, IOWA 50704-0898

PHONE: (VOICE) 319-235-6294
(FAX) 319-235-0028

UNITED STATES PUBLIC LAND SURVEY CORNER CERTIFICATE

Land Survey Monuments situated in Section 32, Township 89 North, Range 13 West, of the Fifth Principal Meridian, Black Hawk County, Iowa.

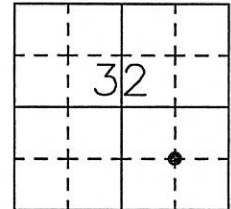
Previously recorded in _____ in County Recorder's Office.
(book, page, document number, etc.)

Monument Description and Remarks

Set 1/2"x24" steel rebar and red cap #16775 at the intersection of opposite 1/4-1/4 corners of the SE 1/4 Section 32.

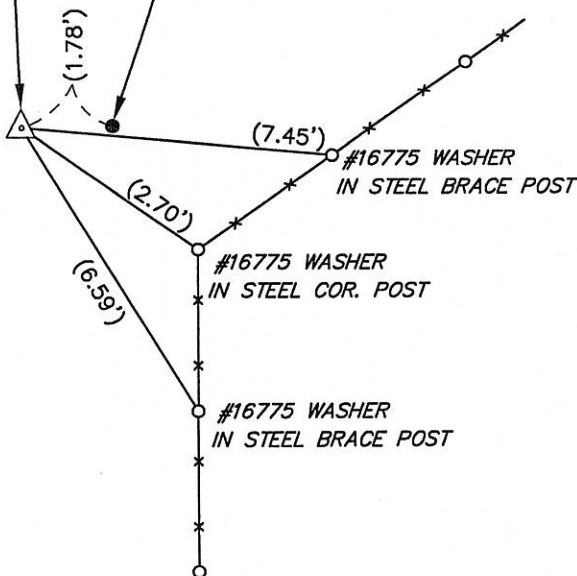
Reason for filing certificate:

- ☒ There is no certificate on file with the Recorder's Office.
☐ Accepts corner position which differs from the one shown in above document.
☐ The corner monument was replaced or modified.
☐ The reference ties in above document were incorrect or missing.



NW CORNER,
SE 1/4, SE 1/4,
SEC. 32-T89N-R13W
(SET 24"x1/2" REBAR
& RED CAP #16775)

WATERLOO PARK
BOARD STEEL POST



IOWA STATE PLANE
COORDINATE SYSTEM
NORTH ZONE
N 3637341.8
E 5217712.6
(FOR REFERENCE ONLY)

738-50

I hereby certify that this land surveying document was prepared and the related survey work was performed by me or under my direct personal supervision and that I am a duly Licensed Land Surveyor under the laws of the State of Iowa.

Signature: _____

David L. Schell, L.S.

Date: March 02, 2018 Lic. No. 16775

Pages or Sheets Covered by this Seal: THIS SHEET ONLY.

My license renewal date is December 31, 2018

SEAL

List Corners to be Indexed

Corners	Section	Twp	Range
NW CORNER, NE 1/4, SE 1/4,	32	89 N	13 W

