

UNITED STATES PUBLIC LAND SURVEY CORNER CERTIFICATE  
OF

Land Survey Monuments situated in Section 32, Township 89 N, Range 13 W, of the Fifth Principal Meridian, Black Hawk County, Iowa  
Previously recorded in Book 2006, Page 28094.

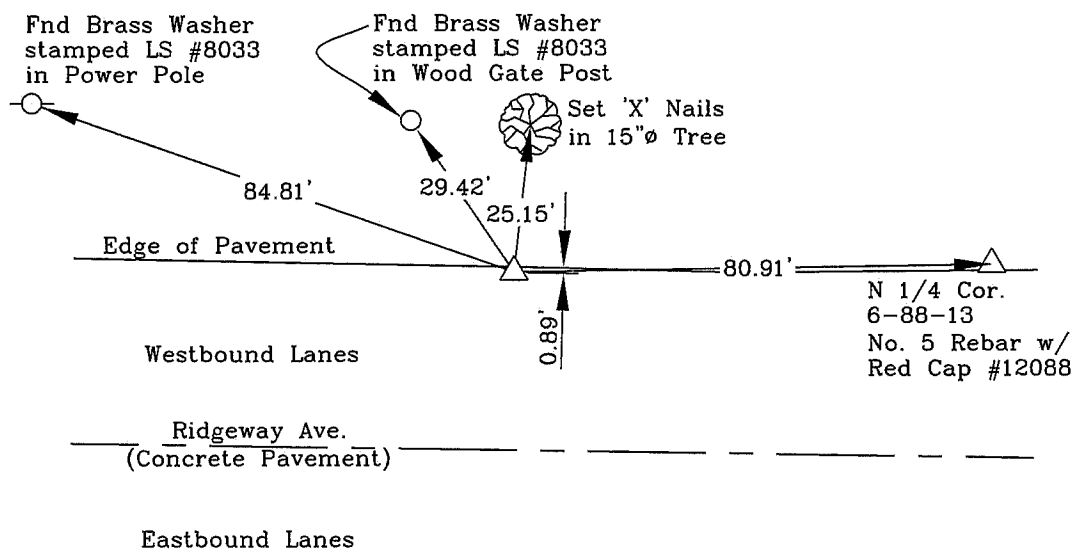
Show reason for preparing this certificate, the evidence and detailed procedures used in establishing the corner positions and monumentation found or placed.)

Monument Description and Remarks: S 1/4 Corner - Document No. 2006-28094 calls for a No. 4 Rebar  
Monument was destroyed during the widening of Ridgeway Avenue for a left turn lane.

Set a Mag nail in the concrete paving at location of previous monument by coordinates as  
established from adjacent survey control points.

PLAN - VIEW

(Show a minimum of three reference ties to durable physical objects, relevant monuments and physical conditions recovery of the corner.)



LEGEND

- SECTION CORNER SET
- POWER POLE
- FENCE LINE
- FENCE CORNER FOUND
- FENCE POST
- LIGHT POLE
- TREE
- TELEPHONE PED.
- CONC. REF. MONUMENT

N

I hereby certify that this land surveying document was prepared and the related survey work was performed by me or under my direct personal supervision and that I am a duly licensed Land Surveyor under the laws of the State of Iowa.



Wendell J. Lupkes 4-13-09  
WENDELL J. LUPKES, L.S. DATE  
License number 12088  
My license renewal date is December 31, 2010  
Pages or sheets covered by this seal: 1

List Corner to be Indexed

Corner	Section	Twp	Range
South 1/4	32	89 N	13 W

SECTION CORNER  
REFERENCE TIES

Scale  
NONE

drawn by  
MAK  
date  
4/8/09

VJ Engineering  
1501 Technology Parkway  
Cedar Falls, Iowa - 319-266-5829

41509 #6092 9/4.00