

*Prepared by & Return to: Isaiah M. Reicks, HRS, LLC, 2206 East Bremer Avenue, Waverly, IA 50677, Phone 319-483-5187*

Land Survey Monument situated in  
Section **32**, Township **89** North, Range **13** West of the Fifth Principal Meridian, **Black Hawk** County, Iowa.  
On file in **Document #2017-00021590** in the County Recorder's Office.

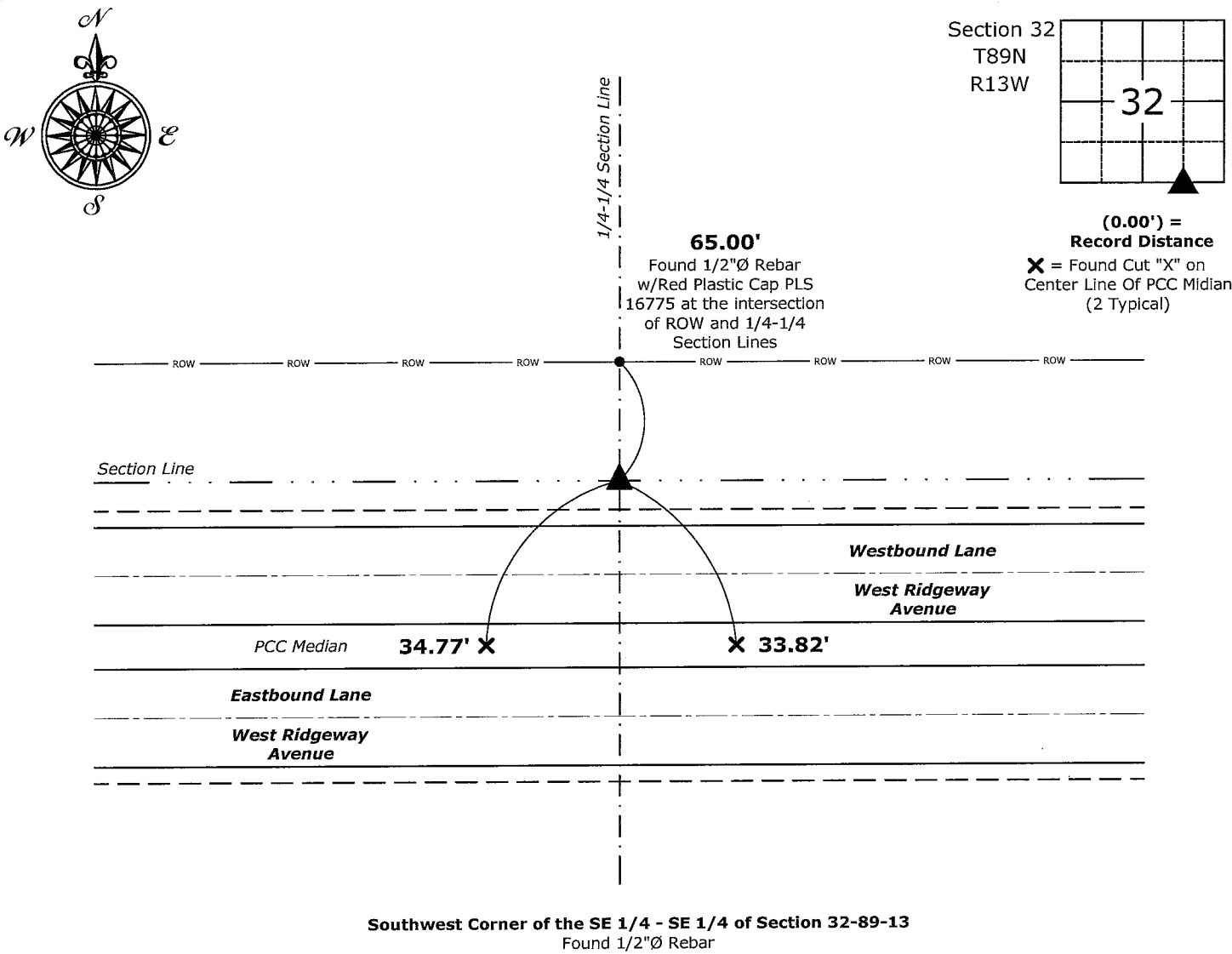
This certificate is being prepared in compliance with Iowa Code Chapter 355.11 because:

- ☐ There is no certificate on file for this corner.  
☐ There are no longer three valid ties of record.  
☐ There are changes to reference ties of record.  
☒ There is change of monumentation of record.  
☐ To clarify description of record monument (ties).

**Monument Description and Remarks:**

**Southwest Corner of the SE 1/4 - SE 1/4:** Found 1/2"Ø Rebar with information obtained from the previously recorded Section Corner Certificate.

(Show a minimum of three reference ties to durable physical objects, relevant monuments and physical conditions that will enable recovery of the corner.)



I hereby certify that this land surveying document was prepared and the related survey work was performed by me or under my direct personal supervision and that I am a duly licensed Land Surveyor under the laws of the State of Iowa.

*Isaiah M. Reicks* 3-9-23

Isaiah M. Reicks Date:

License number 22468

My license renewal date is December 31, 2023.

Sheets covered by this seal: Individual sheet only

List Corner to be Indexed			
Corner	Section	Township	Range
SW-SE-SE	32	89	13

Project Number: 2023-506
FB: Black Hawk 1, Page(s) 47-49