



Doc ID: 007648130001 Type: GEN
Recorded: 06/07/2017 at 04:00:23 PM
Fee Amt: \$7.00 Page 1 of 1
Black Hawk County Iowa
SANDIE L. SMITH RECORDER

File 2017-00021591

ENW * WAYNE CLAASSEN ENGINEERING AND SURVEYING, INC.
P.O. BOX 898 WATERLOO, IOWA 50704-0898

PHONE: (VOICE) 319-235-6294
(FAX) 319-235-0028

UNITED STATES PUBLIC LAND SURVEY CORNER CERTIFICATE

Land Survey Monuments situated in Section 32, Township 89 North, Range 13 West, of the Fifth Principal Meridian, Black Hawk County, Iowa.

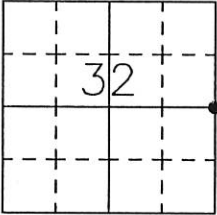
Previously recorded in (book, page, document number, etc.) in County Recorder's Office.

Monument Description and Remarks

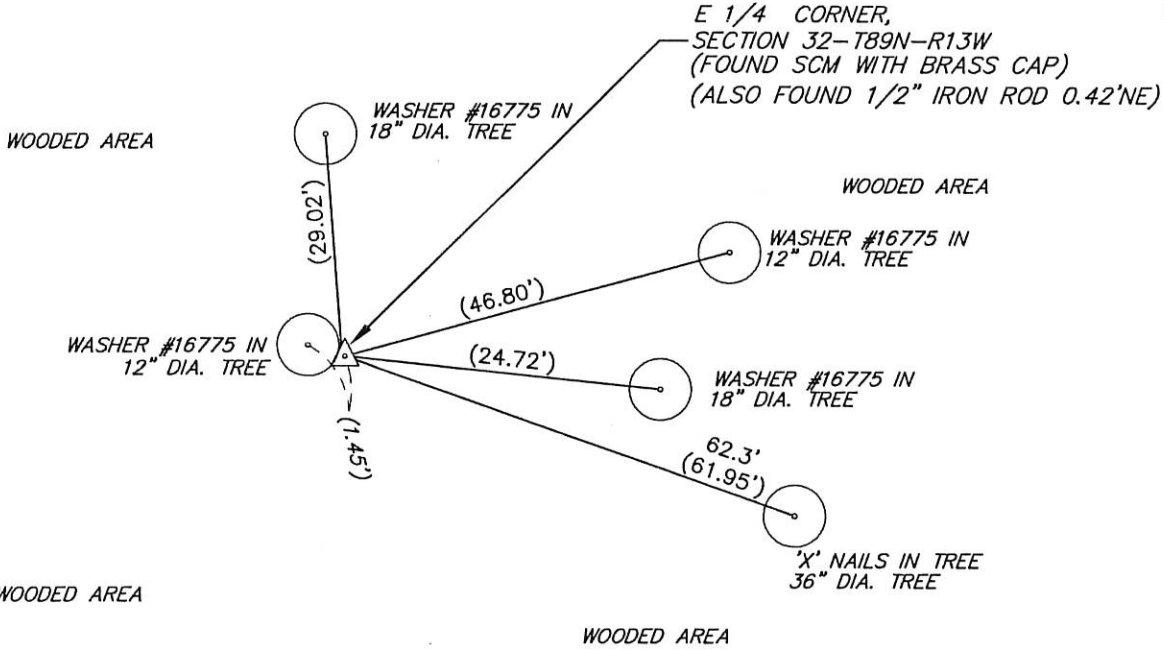
From WPA field notes found in Black Hawk County Engineer's Office dated May 24, 1938: "E 1/4 cor. sec. 32 Found Limestone 14"x12"x4" No other evidence lowered same, and set c.m. on top 12" deep stone 1' E of fe. line." Found S.C.M. with brass cap as per WPA notes. Fences from above field notes are no longer there. Also placed steel fence post 1' away from concrete monument.

000.00 DENOTES RECORD DIMENSION
FROM WPA FIELD NOTES
(000.00) DENOTES FIELD DIMENSION

PLAN - VIEW



- Reason for filing certificate:
- ☒ There is no certificate on file with the Recorder's Office.
 - ☐ Accepts corner position which differs from the one shown in above document.
 - ☐ The corner monument was replaced or modified.
 - ☐ The reference ties in above document were incorrect or missing.



718-57

I hereby certify that this land surveying document was prepared and the related survey work was performed by me or under my direct personal supervision and that I am a duly Licensed Land Surveyor under the laws of the State of Iowa.

Signature: David L. Scheil
David L. Scheil, L.S.
Date: June 05, 2017 Lic. No. 16775

Pages or Sheets Covered by this Seal: THIS SHEET ONLY.

My license renewal date is December 31, 2018

SEAL

List Corners to be Indexed

Corners	Section	Twp	Range
W 1/4 CORNER,	33	89 N	13 W
E 1/4 CORNER,	32	89 N	13 W

