

UNITED STATES PUBLIC LAND SURVEY CORNER CERTIFICATE

OF

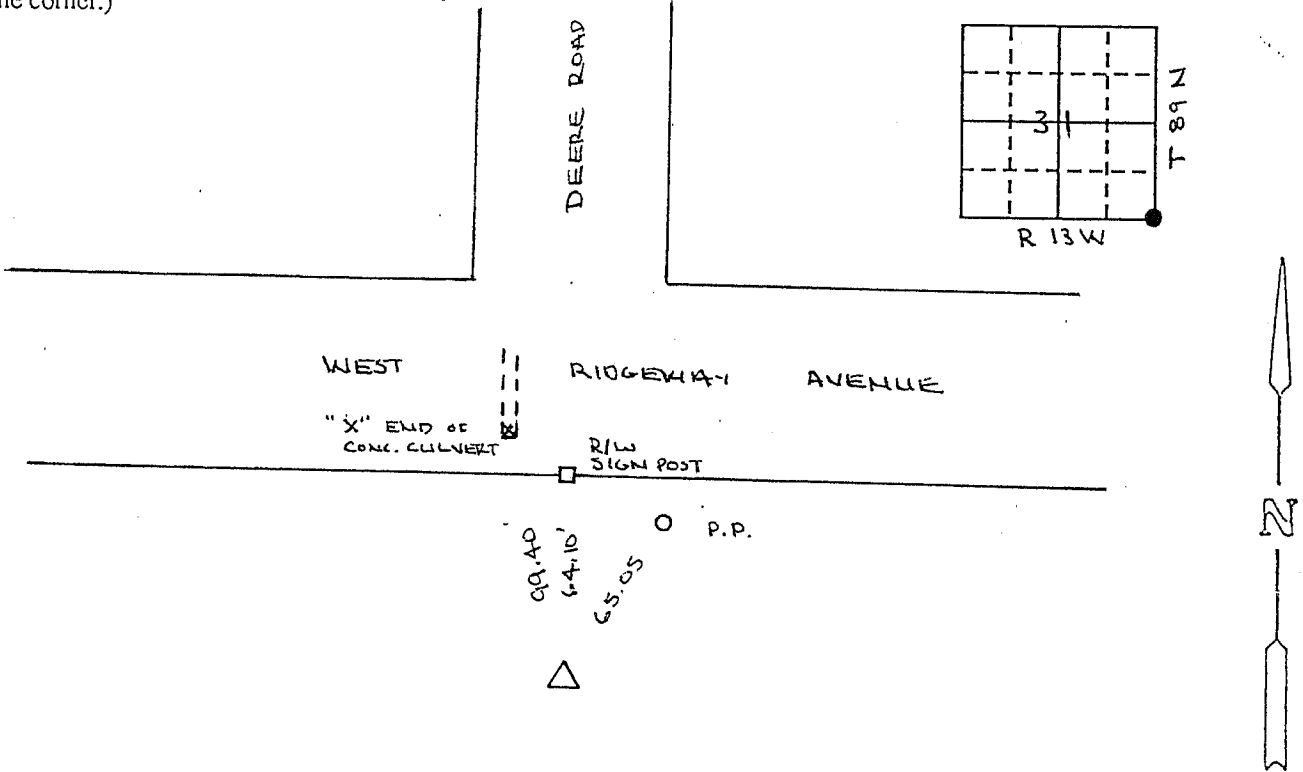
Land Survey Monuments situated in Section 31, Township 89 NORTH, Range 13 WEST, of the Fifth Principal Meridian, BLACK HAWK County, Iowa.
Previously recorded in MISC. BK. 297 p. 187 in County Recorder's Office.
(book, page, document number, etc.)

(Show reason for preparing this certificate, the evidence and detailed procedures used in establishing the corner positions and monumentation found or placed.)

Monument Description and Remarks: SURVEY FOR U.S. CELLULAR
SE CORNER FOUND CLINCHED PIPE

PLAN - VIEW

(Show a minimum of three reference ties to durable physical objects, relevant monuments and physical conditions that will enable recovery of the corner.)



I hereby certify that the survey work was completed and this certificate was prepared by me or under my direct personal supervision and that I am a duly registered land surveyor under the laws of the state of Iowa.

Signature: Robert L. Holze
Name typed or printed: ROBERT L. HOLZE
Date: NOV. 27, 1991 Reg. No. 8656

Corners	List Corners to be Indexed Section	Twp	Range
SE	31	89	13

SEAL



PRICE SURVEYING INC.

P. O. BOX 1352
MASON CITY, IA. 50401
(515) 423-1451