

UNITED STATES PUBLIC LAND SURVEY CORNER CERTIFICATE

SLSI 9-90

OF

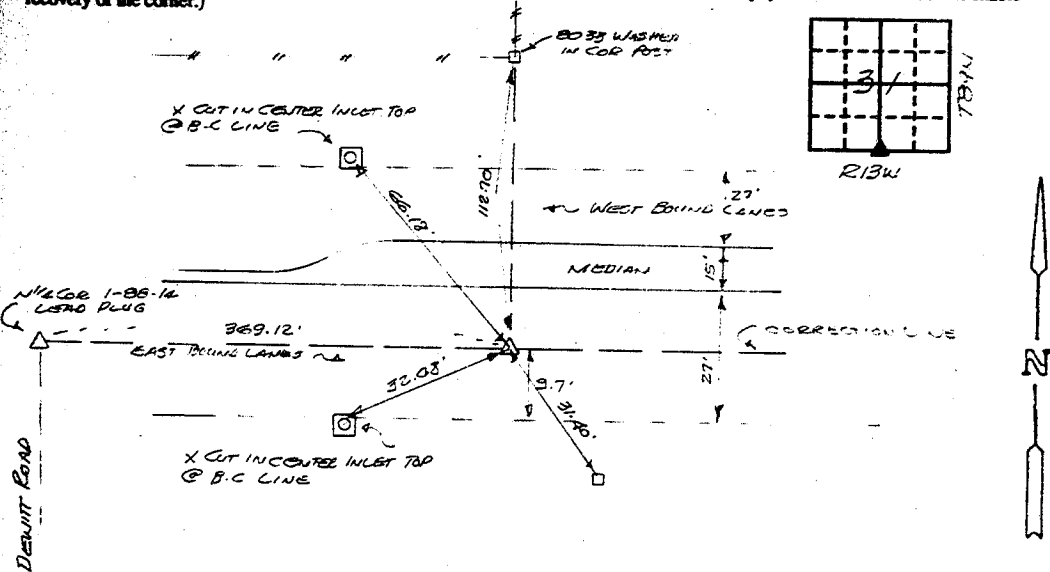
Land Survey Monuments situated in Section 31, Township 89N, Range 13W, of the Fifth Principal Meridian, BLACK HAWK County, Iowa.
Previously recorded in N/A (book, page, document number, etc.) in County Recorder's Office.

(Show reason for preparing this certificate, the evidence and detailed procedures used in establishing the corner positions and monument found or placed.)

Monument Description and Remarks: FOUND 1 1/2" Ø LEAD PLUG 9.7' NORTH OF SOUTH
BACK OF CURB LINE RIDGEWAY AVENUE. THIS POINT WAS SET AS A PILE
DE THE 1979-1980 WEST RIDGEWAY AVE. PAVING PROJECT.

PLAN - VIEW

(Show a minimum of three reference ties to durable physical objects, relevant monuments and physical conditions that will enable recovery of the corner.)



333-69

I hereby certify that the survey work was completed and this certificate was prepared by me or under my direct personal supervision and that I am a duly registered land surveyor under the laws of the state of Iowa.

Signature: F. William King
Name typed or printed: F. WILLIAM KING

Date: 8-1-1991 Reg. No. 8033

SEAL



Corners	List Corners to be Indexed	Section	Twp	Range
51/4	31	89N	13W	