



Doc ID: 003747250001 Type: GEN  
Recorded: 04/22/2009 at 01:02:17 PM  
Fee Amt: \$7.00 Page 1 of 1  
Instr# 200800024474  
Black Hawk County Iowa  
JUDITH A MCCARTHY RECORDER  
Book 1080 Page 34566 - 34566  
File **2009-00019915**

Michael R. Fagle, L.S.

AECOM, 501 Sycamore St., Suite 222, Waterloo, Iowa 50703

1-319-232-6531

## UNITED STATES PUBLIC LAND SURVEY CORNER CERTIFICATE OF

Land Survey Monuments situated in Section 30, Township 89 North,  
Range 13 West, of the Fifth Principal Meridian, BLACK HAWK  
County, Iowa. Previously recorded in FEE BOOK #2003-10040 J.T.  
in County Recorder's Office. (Book, Page, Document Number, etc.)

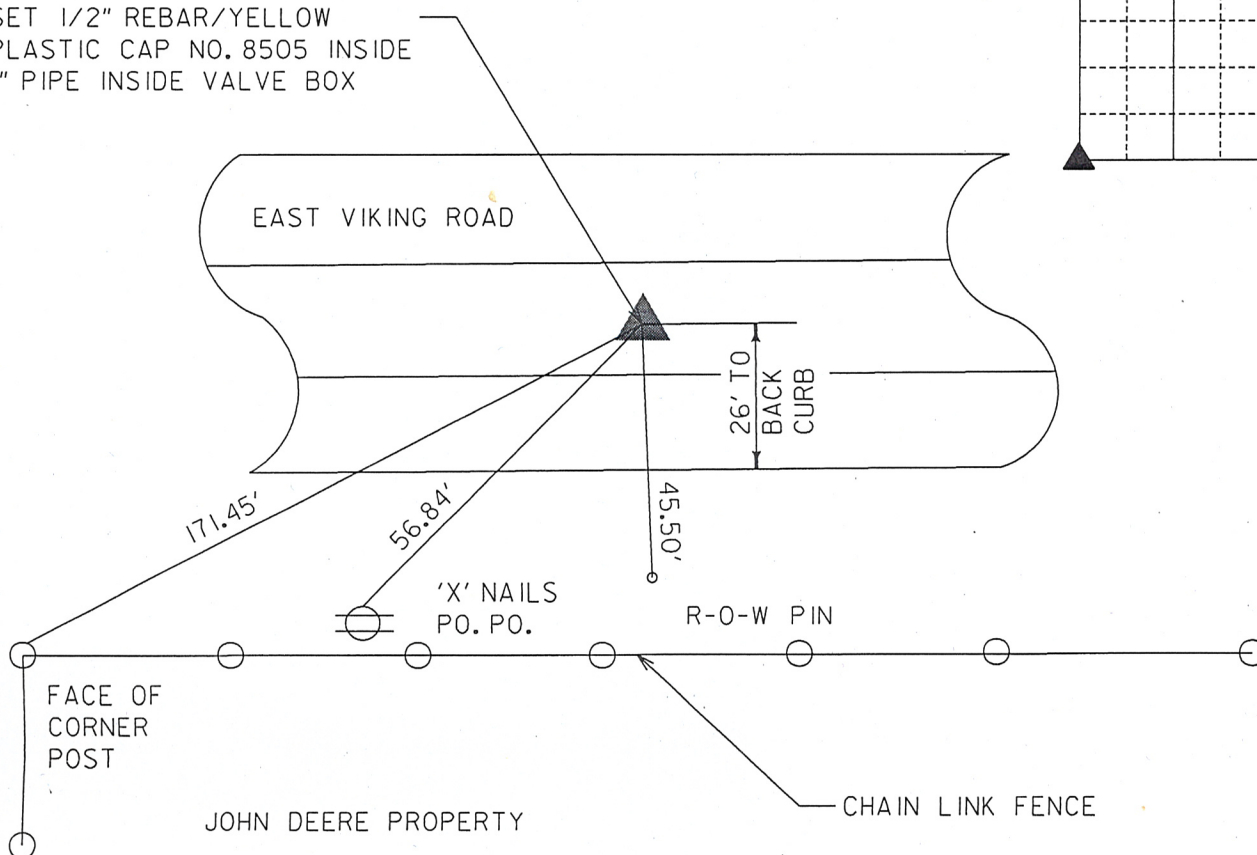
(Show reason for preparing this certificate, the evidence and detailed procedures used in establishing the corner positions and monumentation found or placed.)

Monument Description and Remarks: DURING THE CONSTRUCTION OF EAST VIKING ROAD  
THE S.C.M. AT THE SW CORNER OF SECTION 30-89-13W WAS DESTROYED. WHEN THE PAVING  
WAS BEING CONSTRUCTED A CAST IRON VALVE BOX WITH A 1" DIA. PIPE WITH A 1/2" REBAR  
WITH A YELLOW PLASTIC CAP NO. 8505 WAS SET AT THE LOCATION OF THE CORNER.

### PLAN - VIEW

(Show a minimum of three reference ties to durable physical objects, relevant monuments and physical conditions that will enable recovery of the corner.)

SET 1/2" REBAR/YELLOW  
PLASTIC CAP NO. 8505 INSIDE  
1" PIPE INSIDE VALVE BOX



	I hereby certify that this Land Surveying document was prepared by me or under my direct personal supervision and that I am a duly Licensed Land Surveyor under the laws of the State of Iowa.
	<u>Michael R Fagle</u> 2-06-09
	MICHAEL R. FAGLE Date
	License number 8505
	My license renewal date is December 31, 2010
Pages or sheets covered by this seal: THIS SHEET	

List Corners to be Indexed			
Corners	Section	Twp	Range
SOUTHWEST CORNER	30	T 89 N	R 13 W

\$7.00 Appx. 422 09 R3