

WAYNE CLAASSEN ENGINEERING AND SURVEYING, INC.
P.O. BOX 898 WATERLOO, IOWA 50704-0898

PHONE: (VOICE) 319-235-6294
(FAX) 319-235-0028

UNITED STATES PUBLIC LAND SURVEY CORNER CERTIFICATE

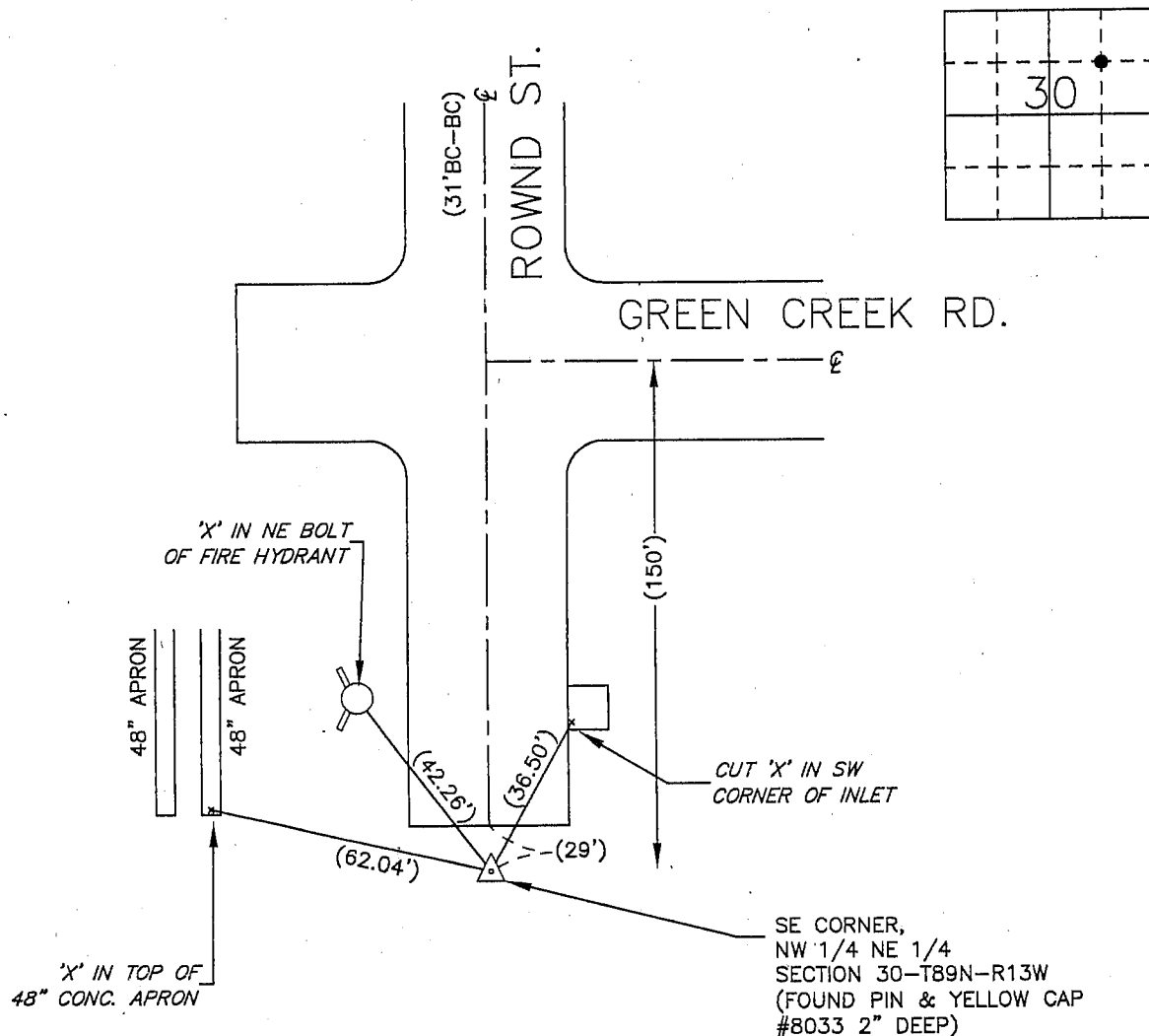
Land Survey Monuments situated in Section 30, Township 89 North, Range 13 West, of the Fifth Principal Meridian, Black Hawk County, Iowa.

Previously recorded in _____ in County Recorder's Office.
(book, page, document number, etc.)

Monument Description and Remarks

No certificate on file. 1 1/2" diameter open pipe found in Dec./2000 that was used for Green Creek Addition subdivision. Same 1 1/2" diameter open pipe found in August/2001 for Parcel "C". December 2002, 1 1/2" diameter open pipe destroyed due to construction of Rownd St. & Green Creek Road. Found pin & yellow cap #8033 in same position as missing 1 1/2" diameter pipe.

PLAN - VIEW



BK 573, PG. 78

I hereby certify that this land surveying document was prepared and the related survey work was performed by me or under my direct personal supervision and that I am a duly Licensed Land Surveyor under the laws of the State of Iowa.

Signature: _____

David L. Scheil, L.S.

Date: FEB. 12, 2009 Lic. No. 16775

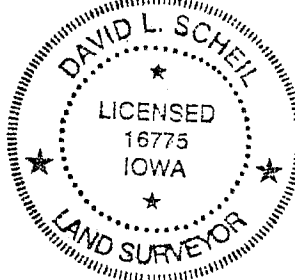
Pages or Sheets Covered by this Seal: THIS SHEET ONLY.

My license renewal date is December 31, 2010

SEAL

List Corners to be Indexed

Corners	Section	Twp	Range
SE CORNER, NW 1/4 NE 1/4	30	89 N	13 W



2009
2/13/09
21081 \$14.00