



Doc ID: 007599070001 Type: GEN
Recorded: 04/12/2017 at 02:04:50 PM
Fee Amt: \$7.00 Page 1 of 1
Black Hawk County Iowa
SANDIE L. SMITH RECORDER

File 2017-00017823

Reserved for County Recorder's use.

Jeffrey P. Helland, 1107 Technology Parkway, Cedar Falls, Iowa 50613-6951, (319)-266-0161

UNITED STATES PUBLIC LAND SURVEY CORNER CERTIFICATE
OF

LAND SURVEY MONUMENTS SITUATED IN SECTION NO. 30, TOWNSHIP NO. 89 NORTH, RANGE
NO. 13 WEST OF THE FIFTH PRINCIPAL MERIDIAN, BLACK HAWK COUNTY, IOWA.
PREVIOUSLY RECORDED IN FILE 2009-00018898.

(SHOW REASON FOR PREPARING THIS CERTIFICATE, THE EVIDENCE AND DETAILED PROCEDURES USED IN ESTABLISHING THE
CORNER POSITIONS AND MONUMENTATION FOUND OR PLACED.)

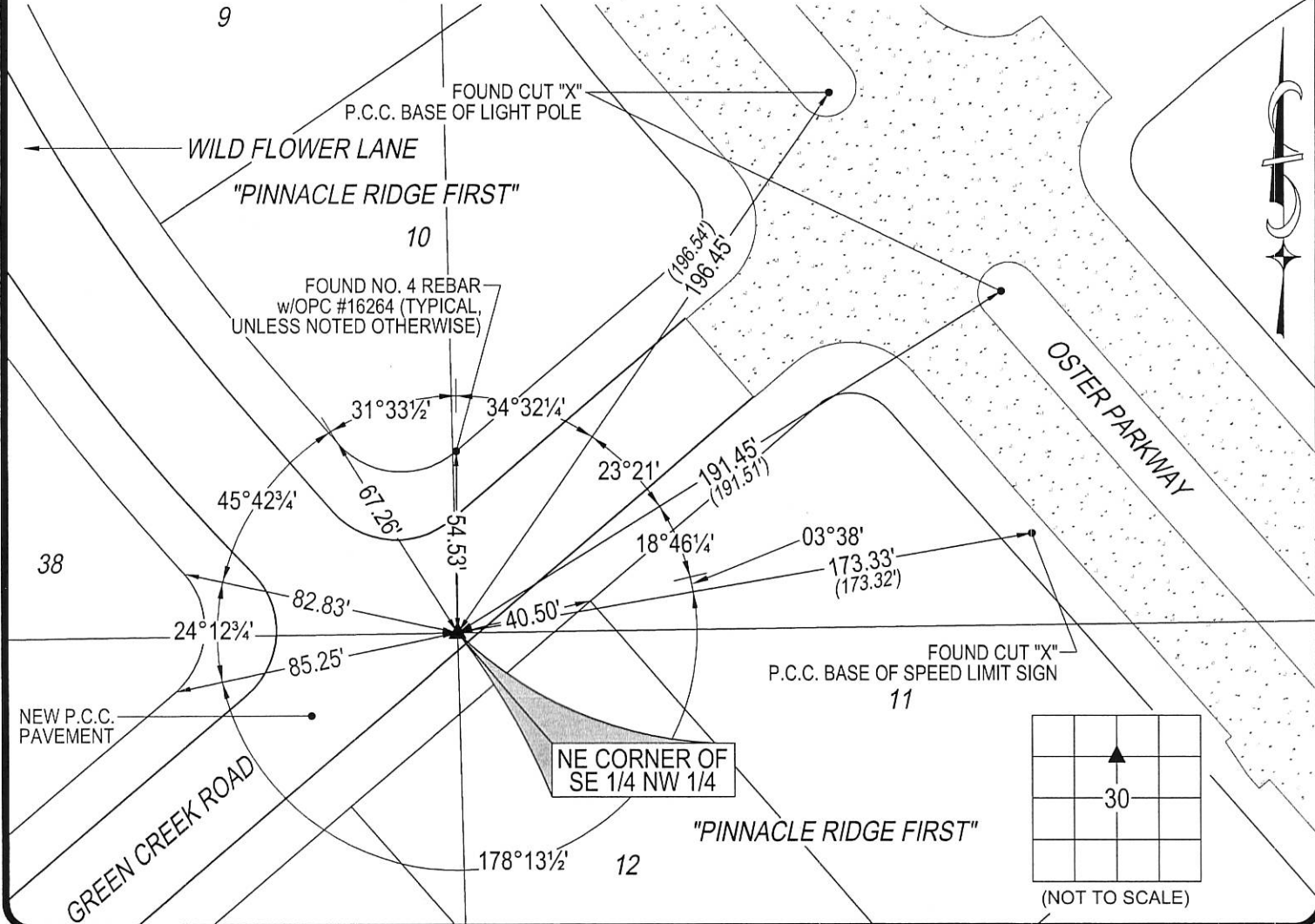
MONUMENT DESCRIPTION AND REMARKS:

USPLSCC FILE 2009-00018898 MONUMENTATION HAS CHANGED. SURVEY COMPLETED IN THE NE 1/4 AND NW 1/4 OF
SEC. 30-T89N-R13W.

→ NE CORNER OF SE 1/4 NW 1/4: USPLSCC FILE 2009-00018898 DATED 04/06/2009 CALLS FOR [SET "X" CUT IN A ROCK
AT MIDPOINT BETWEEN N 1/4 CORNER AND CENTER OF SECTION.] ROCK AND ROCK PILE HAVE BEEN OBLITERATED.
SET CUT "X" IN P.C.C. PAVEMENT AT MIDPOINT OF A STRAIGHT LINE BETWEEN THE N 1/4 CORNER AND CENTER OF
SECTION, AFTER GREEN CREEK PAVEMENT WAS INSTALLED FOR "PINNACLE RIDGE FIRST". SEE "PINNACLE RIDGE
FIRST" AND PLAT OF SURVEY DATED 5/26/2015 RECORDED IN FILE 2016-00000482.

PLAN VIEW

(SHOW A MINIMUM OF THREE REFERENCE TIES TO DURABLE PHYSICAL OBJECTS, RELEVANT MONUMENTS AND PHYSICAL
CONDITIONS THAT WILL ENABLE RECOVERY OF THE CORNER.)



HELLAND ENGINEERING & SURVEYING, LTD.
1107 Technology Parkway
Cedar Falls, Iowa 50613-6955
(319)-266-0161

SHINER = 8D NAIL & 1 5/16"Ø METAL SHINER
BRASS TAG = 8D NAIL & 13/16"Ø BRASS TAG
OPC = PLASTIC CAP (O=ORANGE, R=RED, Y=YELLOW)
(00') RECORDED AS FILE NAME: 14-262-64.DWG

I hereby certify that this land surveying document was prepared
and the related survey work was performed by me or under my
direct personal supervision and that I am a duly licensed
Professional Land Surveyor under the laws of the State of Iowa.
Jeffrey P. Helland 3/27/17
Jeffrey P. Helland
License Number 16264
My license renewal date is December 31, 2017.
All pages or sheets are covered by this seal except:

LIST CORNERS TO BE INDEXED			
CORNER	SECTION	TOWNSHIP	RANGE
NE COR. SE 1/4 NW 1/4	30	89N	13W
SE COR. NE 1/4 NW 1/4	30	89N	13W
SW COR. NW 1/4 NE 1/4	30	89N	13W
NW COR. SW 1/4 NE 1/4	30	89N	13W