

Doc ID: 003732200001 Type: GEN
Recorded: 04/08/2009 at 02:55:42 PM
Fee Amt: \$7.00 Page 1 of 1
Instr# 200800022930
Black Hawk County Iowa
JUDITH A MCCARTHY RECORDER
Book 1080 Page 30531 - 30531
File **2009-00018898**

ENV

WAYNE CLAASSEN ENGINEERING AND SURVEYING, INC.
P.O. BOX 898 WATERLOO, IOWA 50704-0898

PHONE: (VOICE) 319-235-6294
(FAX) 319-235-0028

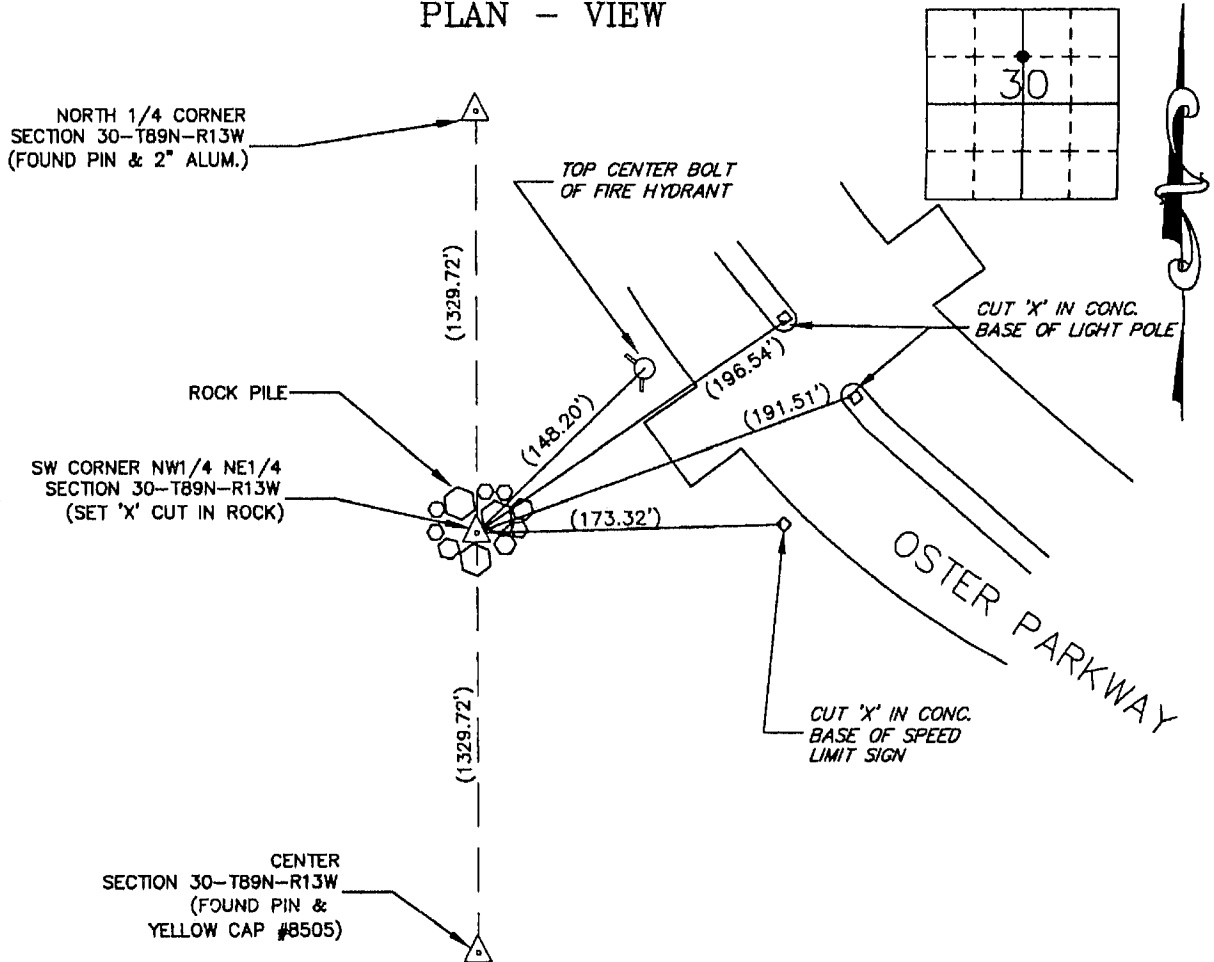
UNITED STATES PUBLIC LAND SURVEY CORNER CERTIFICATE

Land Survey Monuments situated in Section 30, Township 89 North, Range 13 West, of the Fifth Principal Meridian, Black Hawk County, Iowa.
Previously recorded in _____ in County Recorder's Office.
(book, page, document number, etc.)

Monument Description and Remarks

No certificate on file. Set 'X' cut in a rock at midpoint between N 1/4 corner and center of section.

PLAN - VIEW



BK 609-74

I hereby certify that this land surveying document was prepared and the related survey work was performed by me or under my direct personal supervision and that I am a duly Licensed Land Surveyor under the laws of the State of Iowa.

Signature: David L. Schell
David L. Schell, L.S.

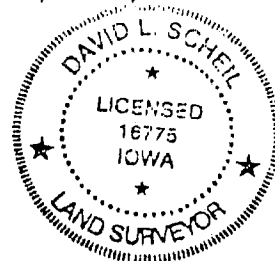
Date: April 06, 2009 Lic. No. 16775

Pages or Sheets Covered by this Seal: THIS SHEET ONLY.

My license renewal date is December 31, 2010

List Corners to be Indexed

Corners	Section	Twp	Range
SW CORNER, NW 1/4 NE 1/4	30	89 N	13 W



SEAL

4809
#31164 1700