

* Michael R. Fagle, L.S.

AECOM, 501 Sycamore St., Suite 222, Waterloo, Iowa 50703

I-319-232-6531

UNITED STATES PUBLIC LAND SURVEY CORNER CERTIFICATE OF

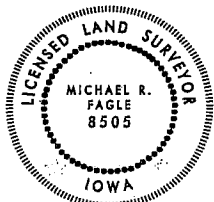
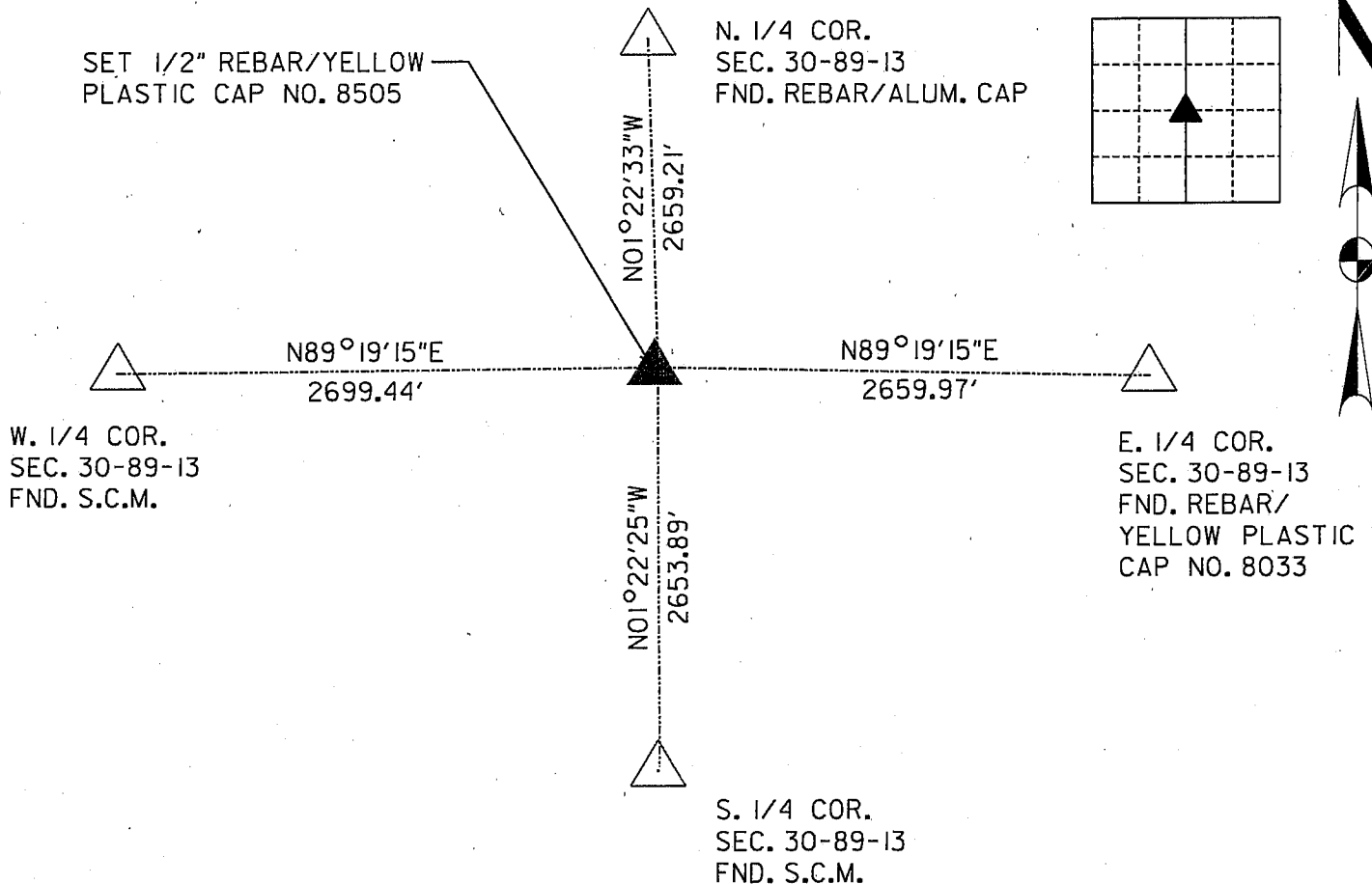
Land Survey Monuments situated in Section 30, Township 89 North,
Range 13 West, of the Fifth Principal Meridian, BLACK HAWK
County, Iowa. Previously recorded in MISC. BK. 0342 p. 327
in County Recorder's Office. (Book, Page, Document Number, etc.)

(Show reason for preparing this certificate, the evidence and detailed procedures used in establishing the corner positions and monumentation found or placed.)

Monument Description and Remarks: FOUND A REBAR WITH YELLOW PLASTIC CAP NO. 8033
THE REBAR WAS DESTROYED DURING GRADING ON A CONSTRUCTION PROJECT. RESET A 1/2"
REBAR WITH YELLOW PLASTIC CAP NO. 8505, ALSO SET A STEEL FENCE POST NEXT TO REBAR.

PLAN - VIEW

(Show a minimum of three reference ties to durable physical objects, relevant monuments and physical conditions that will enable recovery of the corner.)



I hereby certify that this Land Surveying document was prepared by me or under my direct personal supervision and that I am a duly Licensed Land Surveyor under the laws of the State of Iowa.

M. R. Fagle 2-14-09
MICHAEL R. FAGLE Date

License number 8505

My license renewal date is December 31, 2010

Pages or sheets covered by this seal:
THIS SHEET

List Corners to be Indexed

Corners	Section	Twp	Range
CENTER SECTION	30	T 89 N	R 13 W

2/20/09
211 00