

MISC  
INDEX  
MARGIN  
PROOF  
COMPARE

Filed for record JUN 16, 1997  
at 3:00PM, and recorded in Book 325  
of MISC Page 882  
*William S. King* Recorder  
Fee 1-5.00/  
WAYNE CLAASSEN ENGINEERING & SURVEYING I

WAYNE CLAASSEN ENGINEERING AND SURVEYING, INC.  
P.O. BOX 898 WATERLOO, IOWA 50704-0898

PHONE: (VOICE) 319-235-6284  
(FAX) 319-235-0028

### UNITED STATES PUBLIC LAND SURVEY CORNER CERTIFICATE

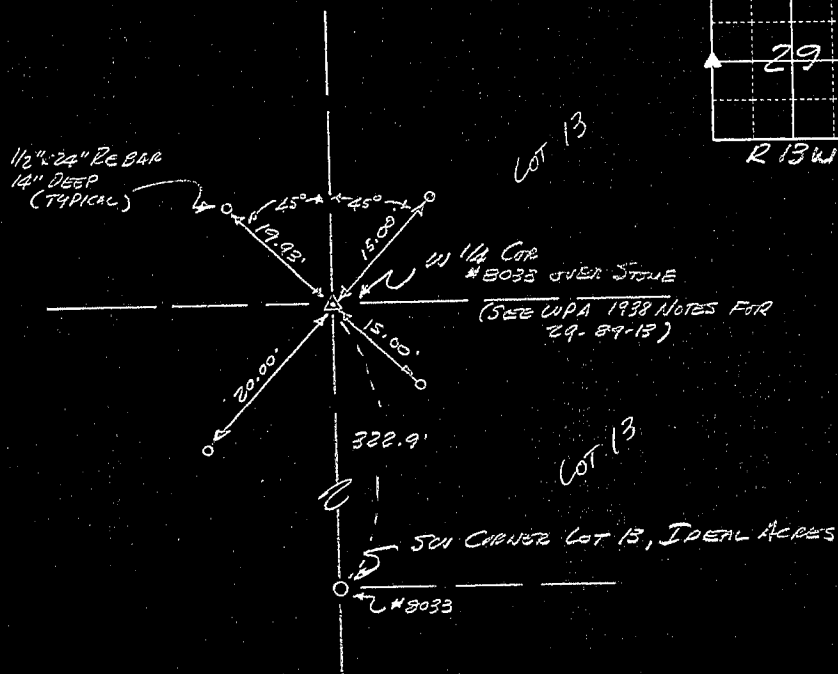
Land Survey Monuments situated in Section 29, Township 39N, Range 13W, of the Fifth Principal Meridian, BLACK HAWK County, Iowa.  
Previously recorded in N/A in County Recorder's Office.  
(book, page, document number, etc.)

(Show reason for preparing this certificate, the evidence and detailed procedures used in establishing the corner positions and monumentation found or placed.)

Monument Description and Remarks CONG. MONUMENT MISSING, FOUND 3"x6"x5" GRANITE ROCK  
AT LOCATION PER SURVEY OLD S&S-212, BACK NOTES UPA 1938 NOTES. SET 8033 CHAPPED 1/2"x2"  
REBAR OVER STONE USING PARCEL #'S PLAT, OLD S&S-212, CITY OF CEDAR RAPIDS, BY  
HAROLD JENSEN, P&LS #5410.

#### PLAN - VIEW

(Show a minimum of three reference ties to durable physical objects, relevant monuments and physical conditions that will enable recovery of the corner.)



477-5

I hereby certify that the survey work was completed and this certificate was prepared by me or under my direct personal supervision and that I am a duly licensed land surveyor under the laws of the state of Iowa.

Signature: *F. William King*

(Name typed or printed:) F. WILLIAM KING

Date: 6-12-1997

Lic. No. 8033

SEAL



List Corners to be Indexed

Corners	Section	Twp	Range
W 114	29	39N	13W

BOOK 325 PAGE 882