

**I  
P  
Z**

Document Number: **2009008576**  
Date: Oct 27, 2008 1:33:00 pm  
Aud Fee: 0.00 Rec Fee: 5.00  
Trans Tax: 0.00 Rec Management Fee: 1.00  
E-Com Fee: 1.00 Non-Standard Page Fee: 0.00  
**Filed for record in Black Hawk County, Iowa**  
**Judith A. McCarthy, County Recorder**

WAYNE CLAASSEN ENGINEERING AND SURVEYING, INC.  
P.O. BOX 898 WATERLOO, IOWA 50704-0898

PHONE: (VOICE) 319-235-6294  
(FAX) 319-235-0028

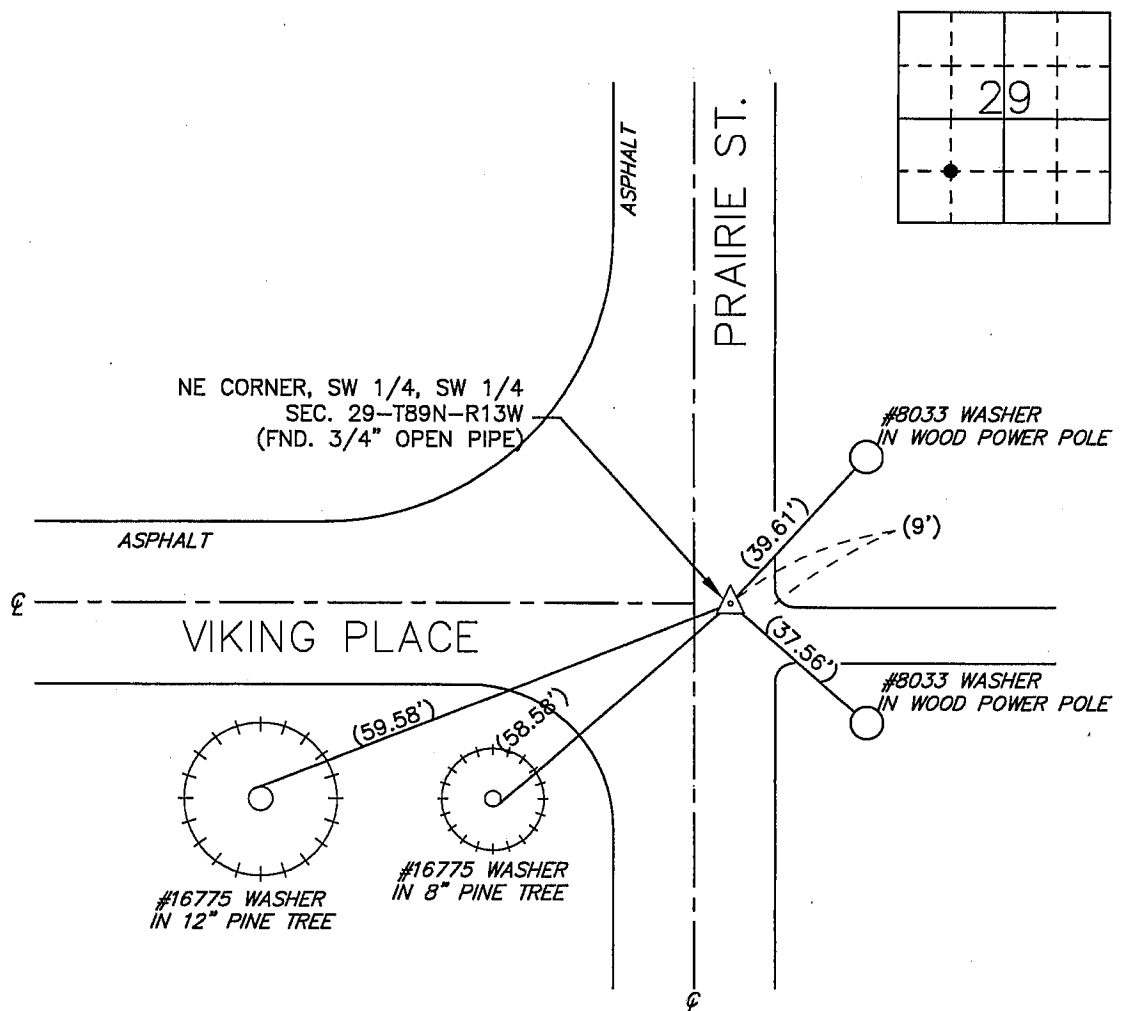
## UNITED STATES PUBLIC LAND SURVEY CORNER CERTIFICATE

Land Survey Monuments situated in Section 29, Township 89 North, Range 13 West, of the Fifth Principal Meridian, Black Hawk County, Iowa.  
Previously recorded in \_\_\_\_\_ in County Recorder's Office.  
(book, page, document number, etc.)

## Monument Description and Remarks

No certificate on file. Found 3/4" open pipe from ties shown on "Laurinda Heights" Subdivision.

PLAN - VIEW



BK 638, PG. 20

I hereby certify that this land surveying document was prepared and the related survey work was performed by me or under my direct personal supervision and that I am a duly Licensed Land Surveyor under the laws of the State of Iowa.

Signature: \_\_\_\_\_  
David L. Scheil, L.S.

Date: OCT. 24, 2008 Lic. No. 16775

Pages or Sheets Covered by this Seal: THIS SHEET ONLY.

My license renewal date is December 31, 2008

SEAL

## List Corners to be Indexed

Corners	Section	Twp	Range
NE. CORNER, SW 1/4 SW 1/4	29	89 N	13 W

