

ENV WAYNE CLAASSEN ENGINEERING
2705 UNIVERSITY AVE
PO BOX 898
WATERLOO IA 50704

I
P
Z

Document Number: 2009008587
Date: Oct 27, 2008 1:52:43 pm
Aud Fee: 0.00 Rec Fee: 5.00
Trans Tax: 0.00 Rec Management Fee: 1.00
E-Com Fee: 1.00 Non-Standard Page Fee: 0.00
Filed for record in Black Hawk County, Iowa
Judith A. McCarthy, County Recorder

WAYNE CLAASSEN ENGINEERING AND SURVEYING, INC.
P.O. BOX 898 WATERLOO, IOWA 50704-0898

PHONE: (VOICE) 319-235-6294
(FAX) 319-235-0028

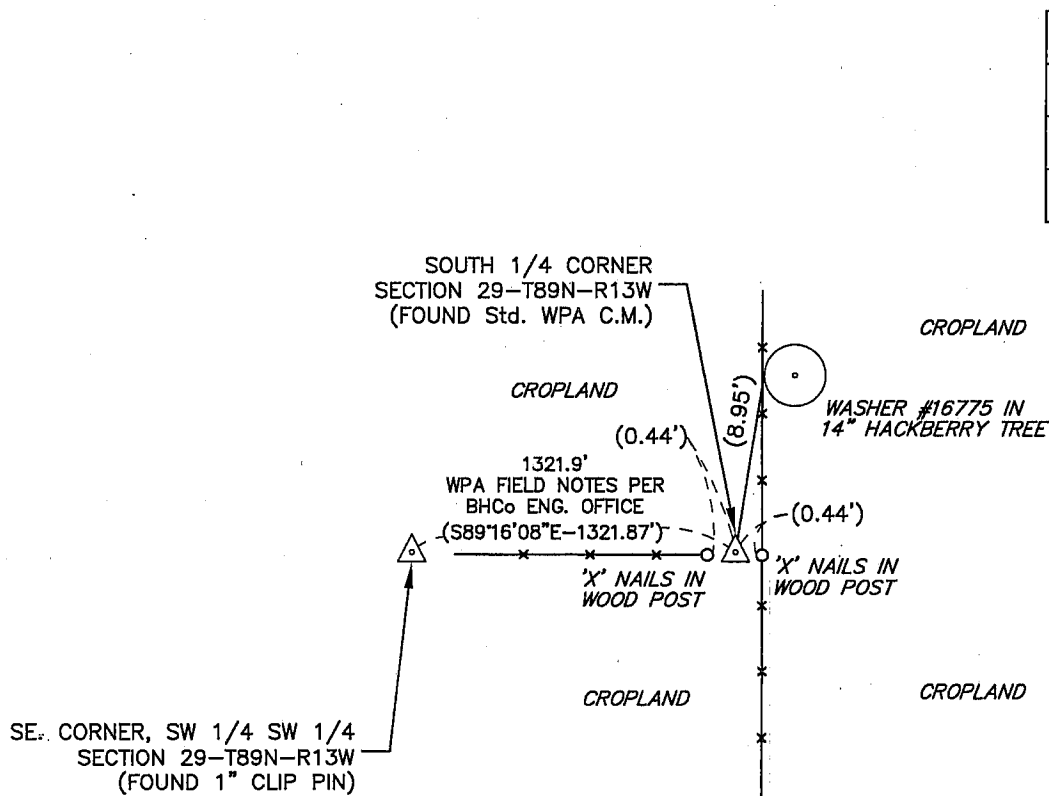
UNITED STATES PUBLIC LAND SURVEY CORNER CERTIFICATE

Land Survey Monuments situated in Section 29, Township 89 North, Range 13 West, of the Fifth Principal Meridian, Black Hawk County, Iowa.
Previously recorded in _____ in County Recorder's Office.
(book, page, document number, etc.)

Monument Description and Remarks

No certificate on file. Found Std. WPA C.M. as per WPA field notes in Black Hawk County Engineer's Office in field book No. 1025. Note says "dug found only old rotted cor. post, no find stone, lowered rotten post, set c.m. on point, flush with ground. 33" Cottonwood stump also at corner, c.m. on S.W. cor. of same at position of rotted cor, post. We could not take stump out to see if stone were anywhere under same." Notes dated 6-7-1938.

PLAN - VIEW



BK 638, PG. 20

I hereby certify that this land surveying document was prepared and the related survey work was performed by me or under my direct personal supervision and that I am a duly Licensed Land Surveyor under the laws of the State of Iowa.

Signature: David L. Scheil
David L. Scheil, L.S.

Date: Oct. 24, 2008 Lic. No. 16775

Pages or Sheets Covered by this Seal: THIS SHEET ONLY.

My license renewal date is December 31, 2008

SEAL

List Corners to be Indexed

Corners	Section	Twp	Range
S. 1/4 CORNER	29	89 N	13 W

