

Document Number: 2007026178
Date: Jun 08, 2007 4:30:00 pm
Aud Fee: 0.00 Rec Fee: 5.00
Trans Tax: 0.00 Rec Management Fee: 1.00
E-Com Fee: 1.00 Non-Standard Page Fee: 0.00
Filed for record in Black Hawk County, Iowa
Judith A. McCarthy, County Recorder

Paul H. Helland, 1107 Technology Parkway, Cedar Falls, Iowa 50613-6951, (319)-266-0161

UNITED STATES PUBLIC LAND SURVEY CORNER CERTIFICATE
OF

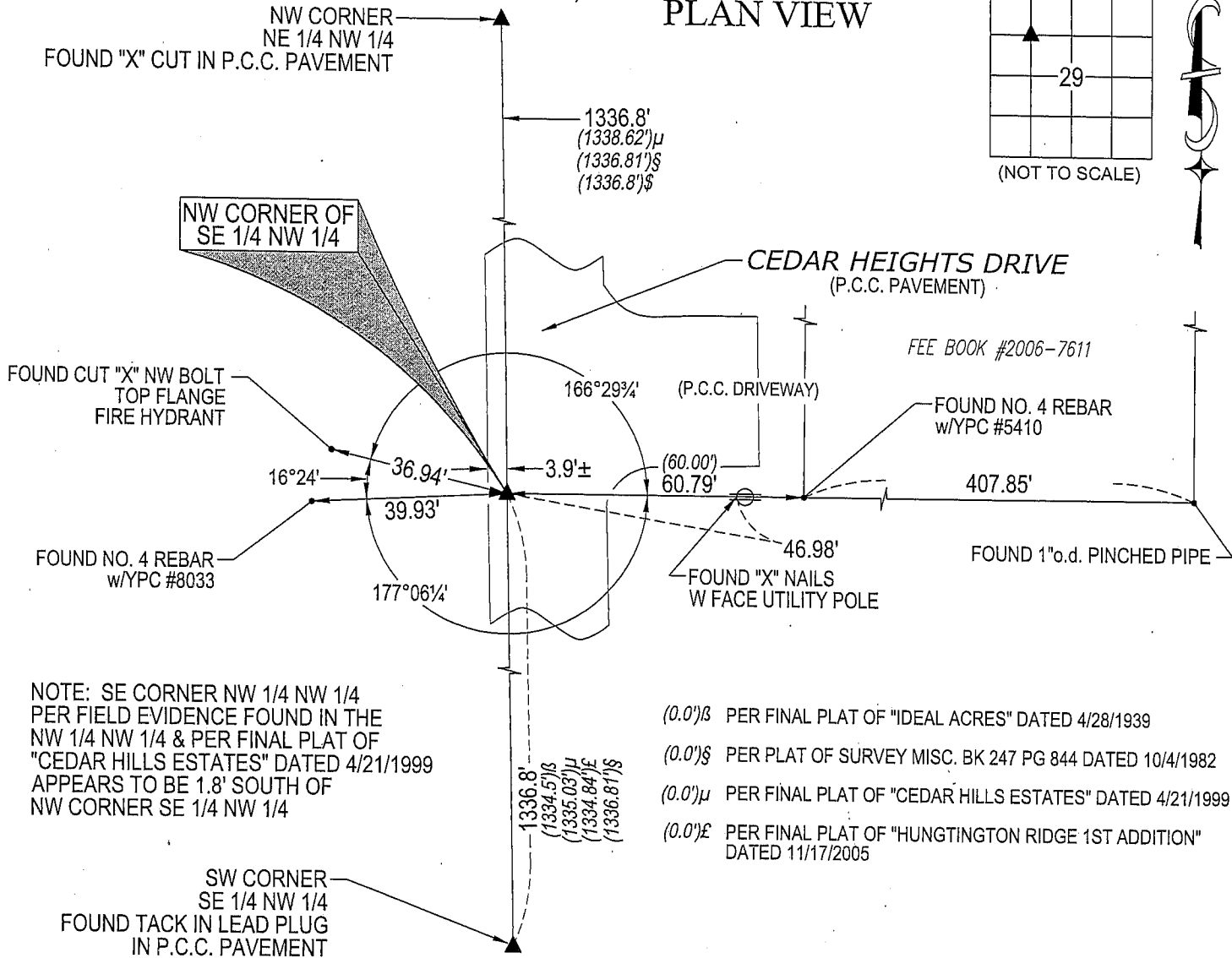
LAND SURVEY MONUMENTS SITUATED IN SECTION NO. 29, TOWNSHIP NO. 89 NORTH, RANGE NO. 13 WEST OF THE FIFTH PRINCIPAL MERIDIAN, BLACK HAWK COUNTY, IOWA.
PREVIOUSLY RECORDED IN N/A

(SHOW REASON FOR PREPARING THIS CERTIFICATE, THE EVIDENCE AND DETAILED PROCEDURES USED IN ESTABLISHING THE CORNER POSITIONS AND MONUMENTATION FOUND OR PLACED.)

MONUMENT DESCRIPTION AND REMARKS:

NO USPLSCC ON FILE. SURVEY COMPLETED IN THE NE 1/4 OF THE NW 1/4 OF SEC. 29-T89N-R13W.
NE CORNER SW 1/4 NW 1/4: NO BLACK HAWK COUNTY ENGINEER REFERENCE TIES AVAILABLE. FINAL PLAT OF "IDEAL ACRES" DATED 4/28/1939 CALL FOR [IRON BAR]. PLAT OF SURVEY MISC. BK 247 PG 844 DATED 10/4/1982 UTILIZES CORNER BUT DOES NOT IDENTIFY THE CORNER. FINAL PLAT OF "HUNTINGTON RIDGE 1ST ADDITION" DATED 11/17/2005 CALLS FOR [SET SECTION/QUARTER CORNER]. SEARCHED AREA, NOTHING FOUND. IT APPEARS NOTHING HAS BEEN SET IN EXISTING P.C.C. PAVEMENT. REESTABLISHED CORNER CORRESPONDING TO THE POSITION PER SAID PLAT OF SURVEY MISC. BK 247 PG 844. SET CUT "X" IN P.C.C. PAVEMENT AT INTERSECTION OF A LINE FROM THE NW CORNER NE 1/4 NW 1/4 AND THE SW CORNER SE 1/4 NW 1/4 AND A LINE FROM A FOUND PINCHED PIPE AT THE SE CORNER OF FEE BOOK #2006-7611 THROUGH A FOUND NO. 4 REBAR W/YPC #5410 AT THE SW CORNER OF FEE BOOK #2006-7611.
(SHOW A MINIMUM OF THREE REFERENCE TIES TO DURABLE PHYSICAL OBJECTS, RELEVANT MONUMENTS AND PHYSICAL CONDITIONS THAT WILL ENABLE RECOVERY OF THE CORNER.)

PLAN VIEW



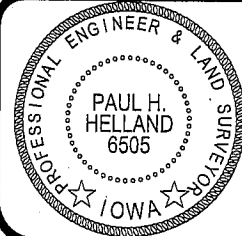
NOTE: SE CORNER NW 1/4 NW 1/4
PER FIELD EVIDENCE FOUND IN THE
NW 1/4 NW 1/4 & PER FINAL PLAT OF
"CEDAR HILLS ESTATES" DATED 4/21/1999
APPEARS TO BE 1.8' SOUTH OF
NW CORNER SE 1/4 NW 1/4

(0.0')B PER FINAL PLAT OF "IDEAL ACRES" DATED 4/28/1939
(0.0')S PER PLAT OF SURVEY MISC. BK 247 PG 844 DATED 10/4/1982
(0.0')M PER FINAL PLAT OF "CEDAR HILLS ESTATES" DATED 4/21/1999
(0.0')E PER FINAL PLAT OF "HUNTINGTON RIDGE 1ST ADDITION" DATED 11/17/2005



HELLAND ENGINEERING & SURVEYING, LTD.
1107 Technology Parkway
Cedar Falls, Iowa 50613-6951
(319)-266-0161

SHINER = 8D NAIL & 1 15/16"Ø METAL SHINER
OPC = PLASTIC CAP (O=ORANGE, R=RED, Y=YELLOW)
(00') RECORDED AS FILE NAME: 06-264C1.DWG



I hereby certify that this land surveying document was prepared and the related survey work was performed by me or under my direct personal supervision and that I am a duly licensed Land Surveyor under the laws of the State of Iowa.

Paul H. Helland
License Number 6505
My license renewal date is December 31, 2007.
All pages or sheets are covered by this seal except:

LIST CORNERS TO BE INDEXED			
CORNER	SECTION	TOWNSHIP	RANGE
NW CORNER SE 1/4 NW 1/4	29	89N	13W