



Doc ID: 008360910001 Type: GEN
Recorded: 03/27/2018 at 12:15:32 PM
Fee Amt: \$7.00 Page 1 of 1
Black Hawk County Iowa
SANDIE L. SMITH RECORDER

File 2018-00015637

Prepared By: VJ Engineering, Matthew A. Kofta, P.L.S., 1501 Technology Parkway, Suite 100, Cedar Falls, Iowa, 50613, (319) 266-5829

United States Public Land Survey Corner Certificate of

Land Survey Monuments situated in Section No. 29, Township No. 89 North,
Range No. 13 West, of the Fifth Principal Meridian, Black Hawk County, Iowa
Previously recorded in N/A.

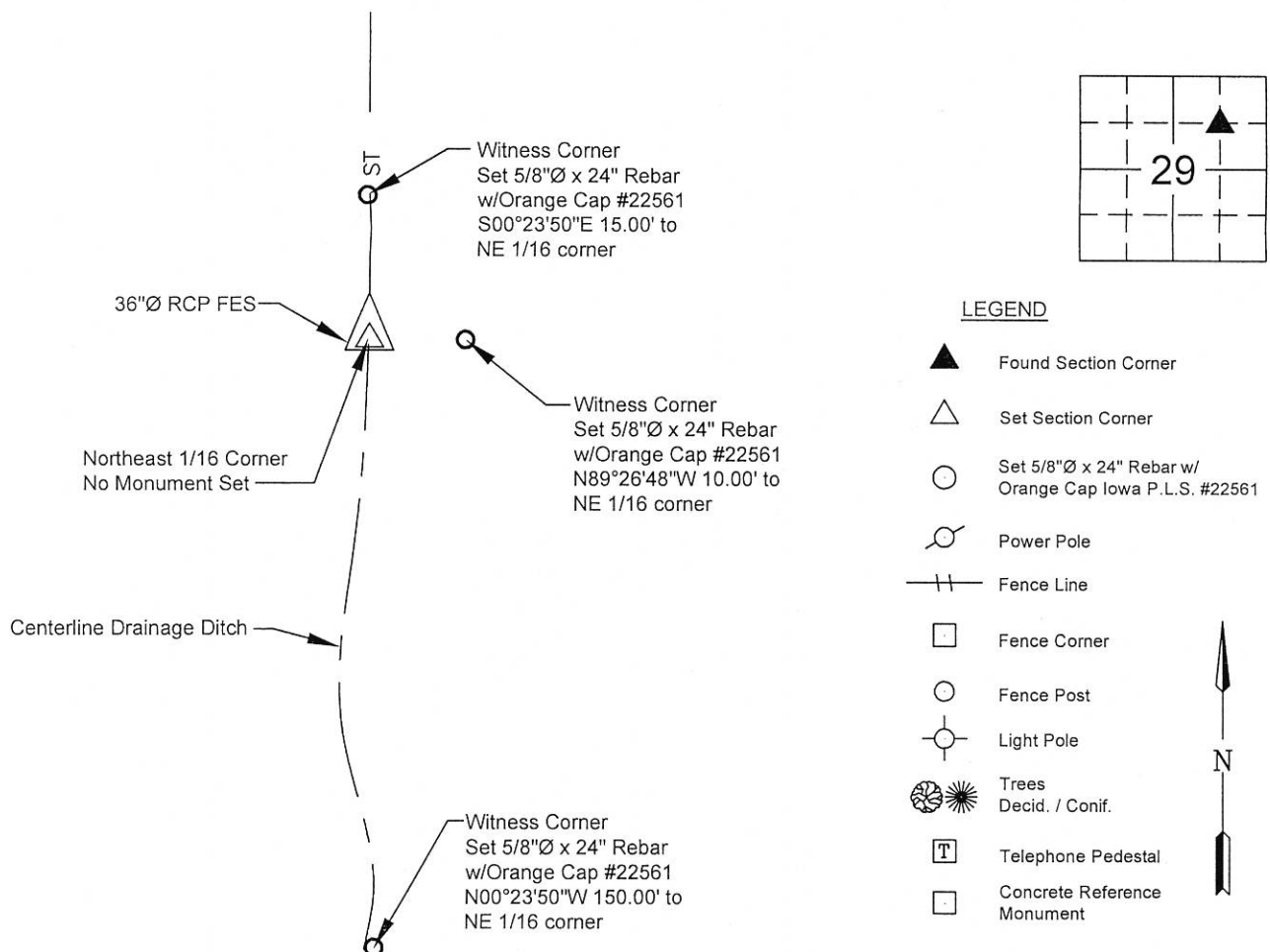
Show reason for preparing this certificate, the evidence and detailed procedures used in establishing the corner positions and monumentation found or placed.)

Monument Description and Remarks: Northeast 1/16 corner — Section 29 - T89N - R13W

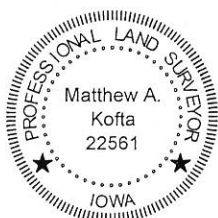
Established corner location at the intersection of a line from the E 1/16 N corner to the CE 1/16 corner and the CN 1/16 corner to the N 1/16 E corner. Corner location falls on a 36"Ø RCP Flared End Section, no monument set at corner. Set 5/8"Ø x 24" Rebar w/Orange Cap #22561 as witness corners 10.00' East, 15.00' North and 150.00' South.
No corner certificate previously recorded.

PLAN - VIEW

(Show a minimum of three reference ties to durable physical objects, relevant monuments and physical conditions that will enable recovery of the corner.)



I hereby certify that this land surveying document was prepared and the related survey work was performed by me or under my direct personal supervision and that I am a duly licensed Land Surveyor under the laws of the State of Iowa.



Matthew A. Kofta, P.L.S.

License Number 22561

My license renewal date is December 31, 2018

Pages or sheets covered by this seal: 1

3/26/18
Date

List Corner to be Indexed

Corner	Section	Twp	Range
NE 1/16	29	89 N	13 W



* VJ Engineering
1501 Technology Parkway
Cedar Falls, Iowa - 319-266-5829

Section Corner
Reference Ties

file no.
178070

drawn by
MAK

date
3/26/18