

Prepared By: VJ Engineering, Matthew A. Kofta, P.L.S., 1501 Technology Parkway, Suite 100, Cedar Falls, Iowa, 50613, (319) 266-5829

United States Public Land Survey Corner Certificate of

Land Survey Monuments situated in Section No. 29, Township No. 89 North, Range No. 13 West, of the Fifth Principal Meridian, Black Hawk County, Iowa
Previously recorded in N/A

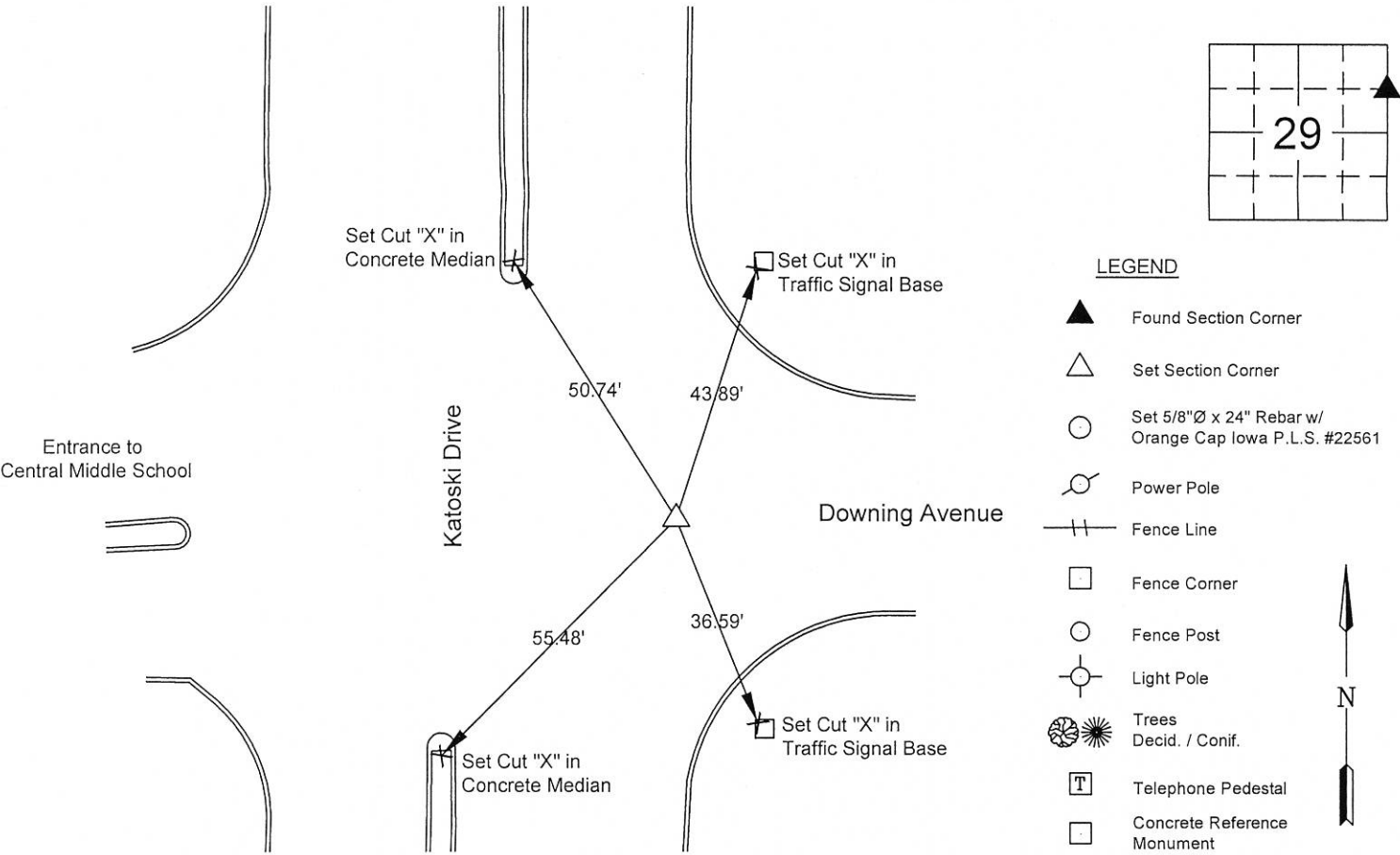
Show reason for preparing this certificate, the evidence and detailed procedures used in establishing the corner positions and monumentation found or placed.)

Monument Description and Remarks: North 1/16 East Corner -- Section 29 - T89N - R13W

Set a MAG nail flush in the concrete paving. Set monument at the intersection of a line from the NE corner to the E 1/4 and the extension of a line from the Center-North 1/16 corner to a found 1"Ø pinched pipe at the SE corner of Miriam's Park.
No corner certificate previously recorded.

PLAN - VIEW

(Show a minimum of three reference ties to durable physical objects, relevant monuments and physical conditions that will enable recovery of the corner.)



I hereby certify that this land surveying document was prepared and the related survey work was performed by me or under my direct personal supervision and that I am a duly licensed Land Surveyor under the laws of the State of Iowa.

Matthew A. Kofta
Matthew A. Kofta, P.L.S.
License Number 22561
My license renewal date is December 31, 2018
Pages or sheets covered by this seal: 1

Date 3/26/18

List Corner to be Indexed

Corner	Section	Twp	Range
N 1/16 E	29	89 N	13 W



* VJ Engineering
1501 Technology Parkway
Cedar Falls, Iowa - 319-266-5829

Section Corner
Reference Ties

file no.
178070
drawn by
MAK
date
3-26-18