



Doc ID: 008360920001 Type: GEN
Recorded: 03/27/2018 at 12:20:38 PM
Fee Amt: \$7.00 Page 1 of 1
Black Hawk County Iowa
SANDIE L. SMITH RECORDER

File 2018-00015638

Prepared By: VJ Engineering, Matthew A. Kofta, P.L.S., 1501 Technology Parkway, Suite 100, Cedar Falls, Iowa, 50613, (319) 266-5829

United States Public Land Survey Corner Certificate of

Land Survey Monuments situated in Section No. 29, Township No. 89 North,
Range No. 13 West, of the Fifth Principal Meridian, Black Hawk County, Iowa
Previously recorded in N/A.

Show reason for preparing this certificate, the evidence and detailed procedures used in establishing the corner positions and monumentation found or placed.)

Monument Description and Remarks: Center-East 1/16 corner -- Section 29 - T89N - R13W

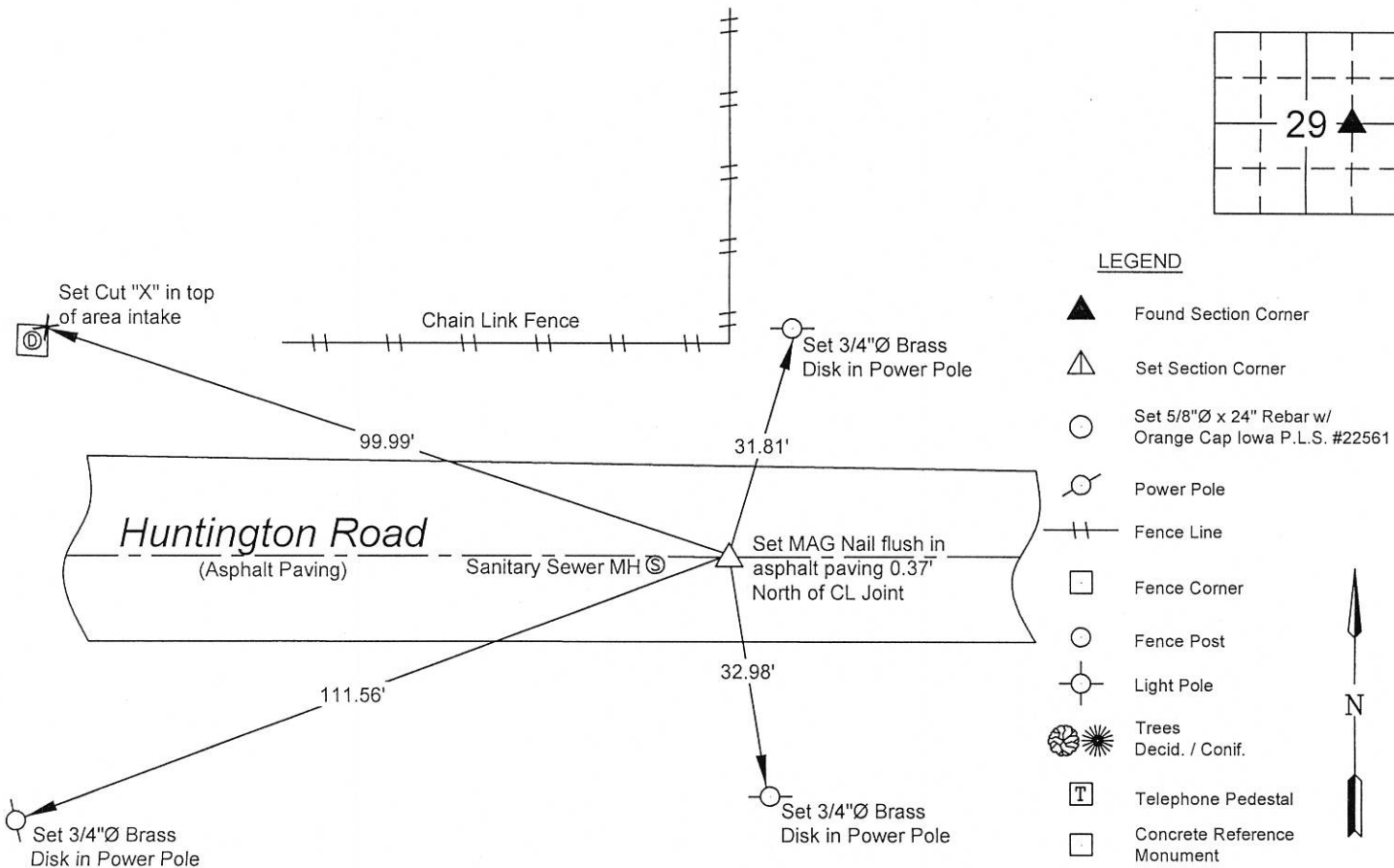
Final Plat of Central Heights Addition calls out setting an iron pin at corner, searched area with locator and found nothing.

Set MAG nail flush in the asphalt paving at the intersection of a line from the Center 1/4 corner to the E 1/4 corner and the extension of the East line of Central Heights Addition.

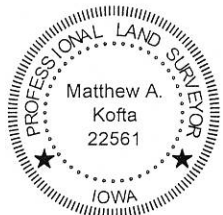
No corner certificate previously recorded.

PLAN - VIEW

(Show a minimum of three reference ties to durable physical objects, relevant monuments and physical conditions that will enable recovery of the corner.)



I hereby certify that this land surveying document was prepared and the related survey work was performed by me or under my direct personal supervision and that I am a duly licensed Land Surveyor under the laws of the State of Iowa.



Matthew A. Kofta, P.L.S.
License Number 22561
My license renewal date is December 31, 2018
Pages or sheets covered by this seal: 1

List Corner to be Indexed

Corner	Section	Twp	Range
CE 1/16	29	89 N	13 W



* VJ Engineering
1501 Technology Parkway
Cedar Falls, Iowa - 319-266-5829

Section Corner
Reference Ties

file no.
178070
drawn by
MAK
date
3-26-18