

INDEX
MARGIN
PROOF
COMPARE

BLACK HAWK COUNTY IOWA:SS
Filed for record Mar 27, 2000 at
4:00 P.M. and recorded in Book _____
of _____ Page _____
Wendell J. Lupkes Recorder
Fee 1-5.00/
VAN WINKLE-JACOB ENGINEERING, INC
6221 CHANCELLOR DR
CEDAR FALLS IA 50613

019962

UNITED STATES PUBLIC LAND SURVEY CORNER CERTIFICATE
OF

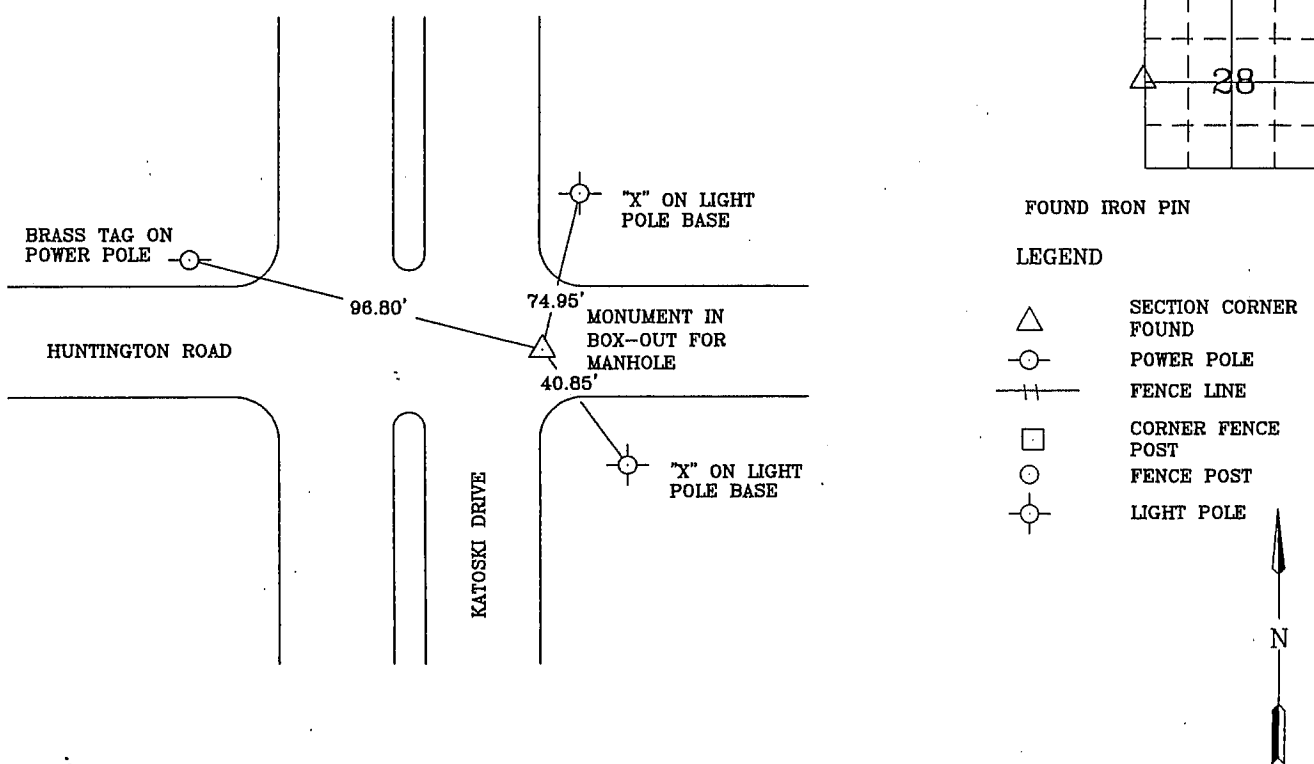
Land Survey Monuments situated in Section 28, Township 89 N, Range 13 W, of the Fifth Principal Meridian, BLACKHAWK County, Iowa
Previously recorded in Book _____, Page _____

Show reason for preparing this certificate, the evidence and detailed procedures used in establishing the corner positions and monumentation found or placed.)

Monument Description and Remarks: NW OF SW 1/4 - FOUND MONUMENT SET IN CONCRETE
BOX-OUT FOR MANHOLE. NO CORNER CERTIFICATE PREVIOUSLY RECORDED.

PLAN - VIEW

(Show a minimum of three reference ties to durable physical objects, relevant monuments and physical conditions recovery of the corner.)



I hereby certify that the survey work was completed and this certificate was prepared by me or under my direct personal supervision and that I am a duly registered land surveyor under the laws of the state of Iowa.

Wendell J. Lupkes 3-27-00

REGISTERED LAND SURVEYOR NO. 12088



List Corners to be Indexed

Corners W 1/4 Section 28 Twp 89 Range 13

VJ Van Winkle - Jacob Engineering, Inc.
6221 CHANCELLOR DRIVE
CEDAR FALLS, IOWA - 319-266-5829

SECTION CORNER
REFERENCE TIES

SCALE
SCALE
DRAWN BY
MJV
DATE
3-16-00