

INDEX U  
MARGIN  
PROOF  
COMPARE

BLACK HAWK COUNTY IOWA:SS  
Filed for record Mar 27, 2000 at  
4:00 P.M. and recorded in Book \_\_\_\_\_  
of \_\_\_\_\_ Page \_\_\_\_\_.

019963

Wendell J. Lupkes Recorder  
Fee 1-5.00/

VAN WINKLE-JACOB ENGINEERING, INC  
6221 CHANCELLOR DR  
CEDAR FALLS IA 50613

## UNITED STATES PUBLIC LAND SURVEY CORNER CERTIFICATE

OF

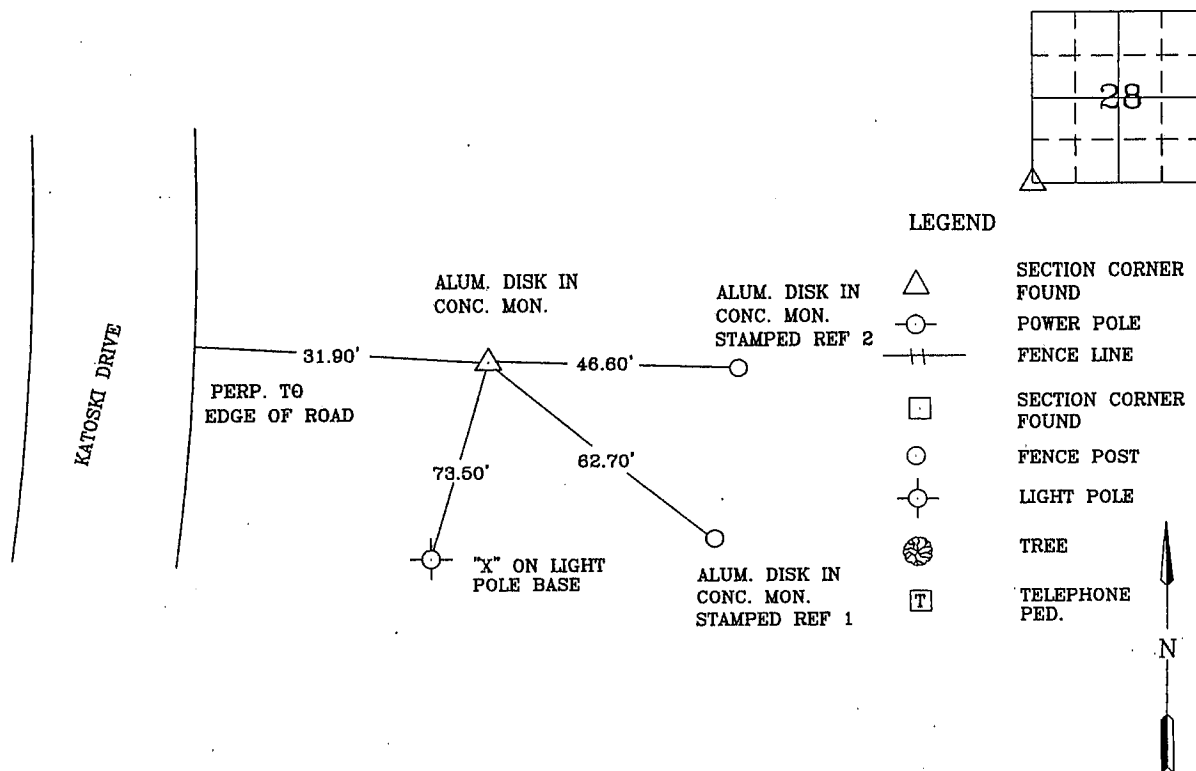
Land Survey Monuments situated in Section 28, Township 89 N, Range  
13 W, of the Fifth Principal Meridian, BLACKHAWK County, Iowa  
Previously recorded in Book \_\_\_\_\_, Page \_\_\_\_\_.

Show reason for preparing this certificate, the evidence and detailed procedures used in establishing the corner positions and monumentation found or placed.)

Monument Description and Remarks: SW - FOUND CONCRETE MONUMENT IN FORESLOPE ON  
EAST SIDE OF KATOSKI DRIVE JUST NORTH OR BLACK HAWK ROAD. NO CORNER CERTIFICATE  
PREVIOUSLY RECORDED.

### PLAN - VIEW

(Show a minimum of three reference ties to durable physical objects, relevant monuments and physical conditions recovery of the corner.)



I hereby certify that the survey work was completed and this certificate was prepared by me or under my direct personal supervision and that I am a duly registered land surveyor under the laws of the state of Iowa.

Wendell J. Lupkes 3-27-00

REGISTERED LAND SURVEYOR NO. 12088



#### List Corners to be Indexed

Corners	Section	Twp	Range
SW	28	89	13

**VJ** Van Winkle - Jacob Engineering, Inc.  
6221 CHANCELLOR DRIVE  
CEDAR FALLS, IOWA - 319-266-5829

SECTION CORNER  
REFERENCE TIES

SCALE  
SCALE  
DRAWN BY  
MJV  
DATE  
3-16-00