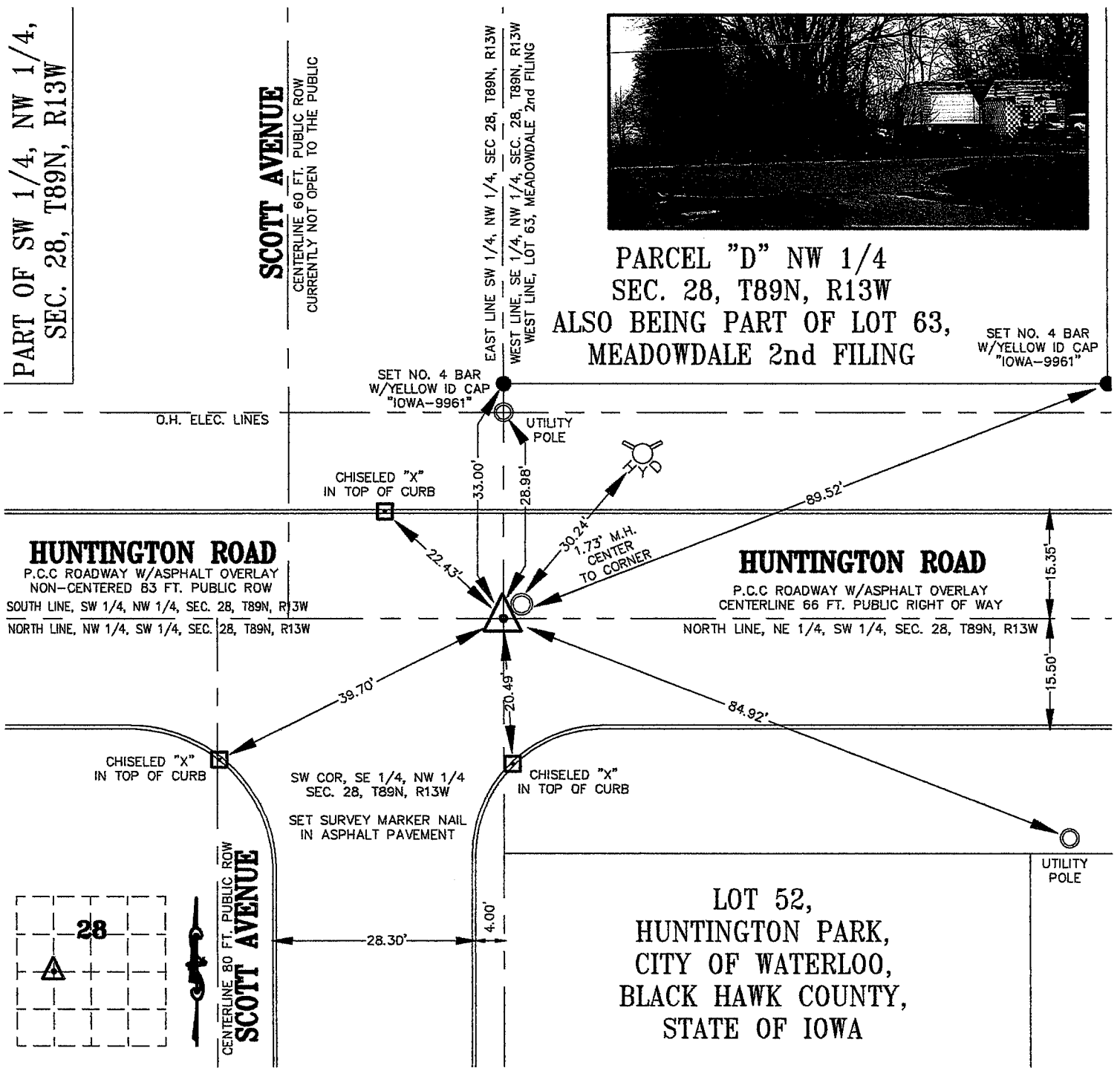


I
P
Z

UNITED STATES PUBLIC LAND SURVEY CORNER CERTIFICATE OF LAND SURVEY MONUMENTS SITUATED IN SECTION 28, TOWNSHIP 89 NORTH, RANGE 13 WEST, OF THE FIFTH PRINCIPAL MERIDIAN, BLACK HAWK COUNTY, IOWA. PREVIOUSLY NOT RECORDED.

(SHOW REASON FOR PREPARING THIS CERTIFICATE, THE EVIDENCE AND DETAILED PROCEDURES USED IN ESTABLISHING THE CORNER POSITIONS AND MONUMENTATION FOUND OR PLACED.)

MONUMENT DESCRIPTION AND REMARKS: NO CURRENT SECTION CORNER CERTIFICATE ON RECORD IN THE BLACK HAWK COUNTY ENGINEER'S OFFICE. SET SURVEY MARKER NAIL IN ASPHALT PAVEMENT BASED ON THE PLAT OF AND FIELD EVIDENCE FOR, LOT 63 OF MEADOWDALE 2nd FILING, IN THE CITY OF WATERLOO, IOWA. MONUMENT USED TO REESTABLISH THE WEST LINE OF LOT 63, MEADOWDALE 2nd FILING.



SCALE: 1 inch = 20 ft.

I HEREBY CERTIFY THAT THIS LAND SURVEYING DOCUMENT WAS PREPARED AND THE RELATED SURVEY WORK WAS PERFORMED BY ME OR UNDER MY DIRECT PERSONAL SUPERVISION AND THAT I AM A DULY LICENSED LAND SURVEYOR UNDER THE LAWS OF THE STATE OF IOWA.

Kirk D. Eschliman DATE: 04/02/2007
KIRK D. ESCHLIMAN, P.L.S. IOWA LIC. NO. 9961
MY LICENSE RENEWAL DATE IS DECEMBER 31, 2007
PAGES OR SHEETS COVERED BY THIS SIGNATURE & SEAL: SHEET 1 OF 1



THIS PLAT IS NOT CERTIFIED
UNLESS AN EMBOSSED SEAL IS
AFFIXED HEREON

LIST OF CORNERS TO BE INDEXED:

CORNER	SEC	TWP	RANGE
SW COR SE 1/4, NW 1/4	28	89	13

KESS & ASSOCIATES, INC.
723 BROADWAY, WATERLOO, IOWA 50703-5811 PHONE: (319) 234-0509

DATE OF FIELD WORK: MARCH 30, 2007
DWG. DATE: 04/02/2007 DRAWN BY: ZJS
CADD FILE: 07A34SCC2.DWG PROJECT NO.: 07A34