

Document Number: 2007020757  
 Date: Apr 04, 2007 4:30:00 pm  
 Aud Fee: 0.00 Rec Fee: 5.00  
 Trans Tax: 0.00 Rec Management Fee: 1.00  
 E-Com Fee: 1.00 Non-Standard Page Fee: 0.00  
 Filed for record in Black Hawk County, Iowa  
 Judith A. McCarthy, County Recorder

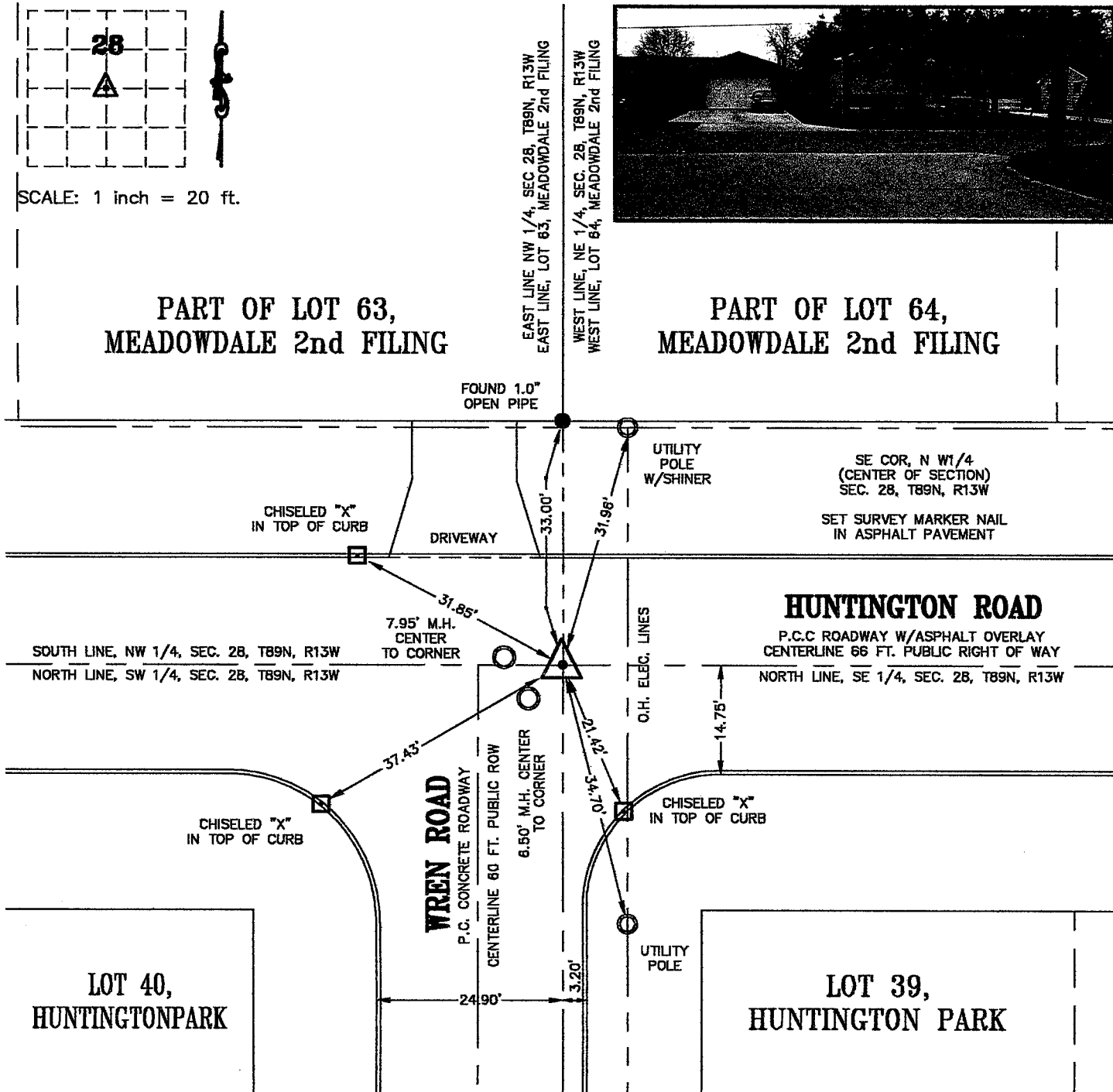
Kirk D. Eschliman, P.L.S. Iowa Lic. No. 9961, 723 Broadway Street, Waterloo, Iowa 50703 - Phone: 319-234-0509

# UNITED STATES PUBLIC LAND SURVEY CORNER CERTIFICATE OF

LAND SURVEY MONUMENTS SITUATED IN SECTION 28, TOWNSHIP 89 NORTH, RANGE 13 WEST, OF THE FIFTH PRINCIPAL MERIDIAN, BLACK HAWK COUNTY, IOWA. PREVIOUSLY RECORDED IN BOOK N/A, PAGE N/A.

(SHOW REASON FOR PREPARING THIS CERTIFICATE, THE EVIDENCE AND DETAILED PROCEDURES USED IN ESTABLISHING THE CORNER POSITIONS AND MONUMENTATION FOUND OR PLACED.)

MONUMENT DESCRIPTION AND REMARKS: NO CURRENT SECTION CORNER CERTIFICATE ON RECORD IN THE BLACK HAWK COUNTY ENGINEER'S OFFICE. SET SURVEY MARKER NAIL IN PAVEMENT BASED ON THE PLAT OF AND FIELD EVIDENCE FOR, LOT 63 OF MEADOWDALE 2nd FILING, IN THE CITY OF WATERLOO, IOWA. MONUMENT USED TO REESTABLISH THE WEST LINE OF LOT 63, MEADOWDALE 2nd FILING.



I HEREBY CERTIFY THAT THIS LAND SURVEYING DOCUMENT WAS PREPARED BY ME OR UNDER MY DIRECT PERSONAL SUPERVISION AND THAT I AM A DULY LICENSED LAND SURVEYOR UNDER THE LAWS OF THE STATE OF IOWA.

*[Signature]* DATE: 03/30/2007  
 KIRK D. ESCHLIMAN, P.L.S. IOWA LIC. NO. 9961  
 MY LICENSE RENEWAL DATE IS DECEMBER 31, 2007  
 PAGES OR SHEETS COVERED BY THIS SIGNATURE & SEAL: SHEET 1 OF 1



THIS PLAT IS NOT CERTIFIED UNLESS AN EMBOSSED SEAL IS AFFIXED HEREON

## LIST OF CORNERS TO BE INDEXED:

CORNER	SEC	TWP	RANGE
SE COR NW 1/4	28	89	13

**KESS & ASSOCIATES, INC.**  
 723 BROADWAY, WATERLOO, IOWA 50703-5811 PHONE: (319) 234-0509

DATE OF FIELD WORK: MARCH 29, 2007  
 DWG. DATE: 03/30/2007 DRAWN BY: WWC  
 CADD FILE: 07A34SCC1.DWG PROJECT NO.: 07A34