

UNITED STATES PUBLIC LAND SURVEY CORNER CERTIFICATE

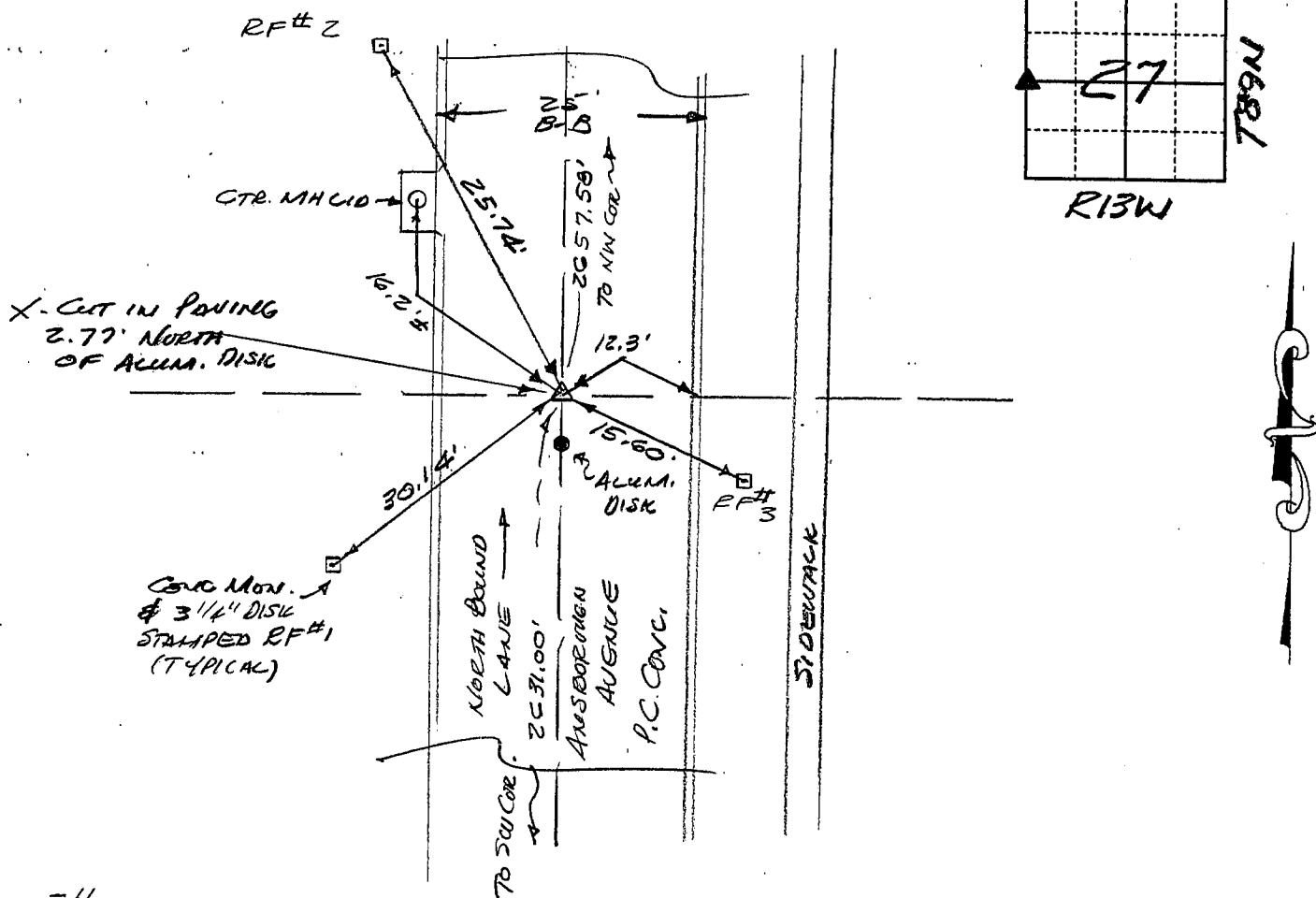
Land Survey Monuments situated in Section 27, Township T89N, Range 13W, of the Fifth Principal Meridian, BLACK HAWK County, Iowa.
Previously recorded in _____ in County Recorder's Office.
(book, page, document number, etc.)

(Show reason for preparing this certificate, the evidence and detailed procedures used in establishing the corner positions and monumentation found or placed.)

Monument Description and Remarks FOUND 3 1/4" ALUMINUM DISK AT 2.77'
SOUTH OF CORNER LOCATION (SEE ATTACHED PAGE FOR PROCEDURE FOR
THIS DETERMINATION) W 1/4 COR. 27-89-13

PLAN - VIEW

(Show a minimum of three reference ties to durable physical objects, relevant monuments and physical conditions that will enable recovery of the corner.)



456-73 456-58, 59

I hereby certify that the survey work was completed and this certificate was prepared by me or under my direct personal supervision and that I am a duly registered land surveyor under the laws of the state of Iowa.

Signature: F. William King

(Name typed or printed) F. WILLIAM KING

Date: 4-22-2020

Reg. No. 8033

SEAL



List Corners to be Indexed

Corners	Section	Twp	Range
<u>W 1/4</u>	<u>27</u>	<u>89</u>	<u>13</u>

MISC. BK. 320 p. 275