

Kirk D. Eschliman, P.L.S. Iowa Lic. No. 9961, 723 Broadway Street, Waterloo, Iowa 50703 - Phone: 319-234-0509

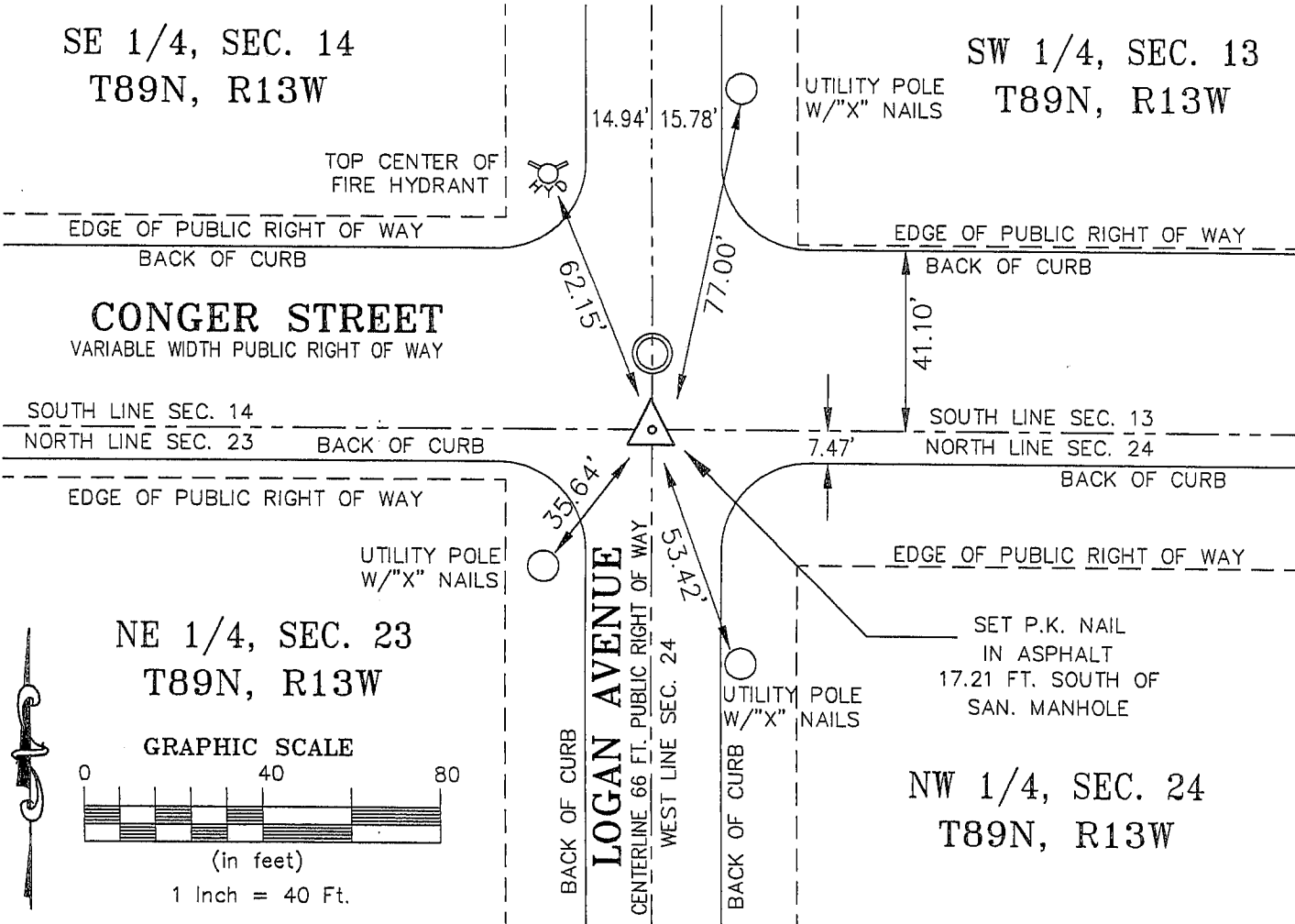
UNITED STATES PUBLIC LAND SURVEY CORNER CERTIFICATE
OF

LAND SURVEY MONUMENTS SITUATED IN SECTION TWENTY-FOUR (24), TOWNSHIP EIGHTY-NINE (89) NORTH
RANGE THIRTEEN (13) WEST, OF THE FIFTH PRINCIPAL MERIDIAN, BLACK HAWK COUNTY, IOWA.
PREVIOUSLY RECORDED IN (NOT PREVIOUSLY RECORDED) (BOOK, PAGE, DOCUMENT NUMBER, ETC.) IN THE COUNTY RECORDER'S OFFICE.

(SHOW REASON FOR PREPARING THIS CERTIFICATE, THE EVIDENCE AND DETAILED PROCEDURES USED IN ESTABLISHING THE CORNER POSITIONS AND MONUMENTATION FOUND OR PLACED.)

MONUMENT DESCRIPTION AND REMARKS:
CURRENT SECTION CORNER CERTIFICATE NOT ON FILE IN THE BLACK HAWK COUNTY ENGINEER'S OFFICE.
SET P.K. NAIL, IN ASPHALT SURFACE OF CONGER STREET AND LOGAN AVENUE. MONUMENT USED AS
REFERENCE IN A FIELD SURVEY IN THE NORTHWEST 1/4 OF SECTION 24.

PLAN - VIEW



I HEREBY CERTIFY THAT THIS LAND SURVEYING DOCUMENT
WAS PREPARED AND RELATED SURVEY WORK WAS
PERFORMED BY ME OR UNDER MY DIRECT PERSONAL
SUPERVISION AND THAT I AM A DULY LICENSED LAND
SURVEYOR UNDER THE LAWS OF THE STATE OF IOWA.

Kirk D. Eschliman DATE: 08/09/2006
KIRK D. ESCHLIMAN, P.L.S. IOWA LIC. NO. 9961
MY LICENSE RENEWAL DATE IS DECEMBER 31, 2007
PAGES OR SHEETS COVERED BY THIS SIGNATURE & SEAL: SHEET 1 OF 1

FOR: CENTRAL STATES DEVELOPMENT
11912 ELM STREET, SUITE 23
OMAHA, NEBRASKA 68144

REQ. BY: JOHN FOLEY, CENTRAL STATES
OMAHA, NEBRASKA 68144



KESS & ASSOCIATES, INC.
PROFESSIONAL LAND SURVEYORS - 723 BROADWAY, WATERLOO, IOWA 50703-5811
DATE: 08/09/2006 C.A.D.D. FILE: 06A76SCC1.DWG PROJECT NO.: 06A76

List of corners to be indexed:

Corners	Section	Township	Range
NW	24	T89N	R13W

