



Doc ID: 006799100001 Type: GEN
Recorded: 06/30/2015 at 08:28:26 AM
Fee Amt: \$7.00 Page 1 of 1
Black Hawk County Iowa
SANDIE L. SMITH RECORDER

File 2015-00021518

ENV *

WAYNE CLAASSEN ENGINEERING AND SURVEYING, INC.
P.O. BOX 898 WATERLOO, IOWA 50704-0898

PHONE: (VOICE) 319-235-6294
(FAX) 319-235-0028

UNITED STATES PUBLIC LAND SURVEY CORNER CERTIFICATE

Land Survey Monuments situated in Section 23, Township 89 North, Range 13 West, of the Fifth Principal Meridian, Black Hawk County, Iowa.

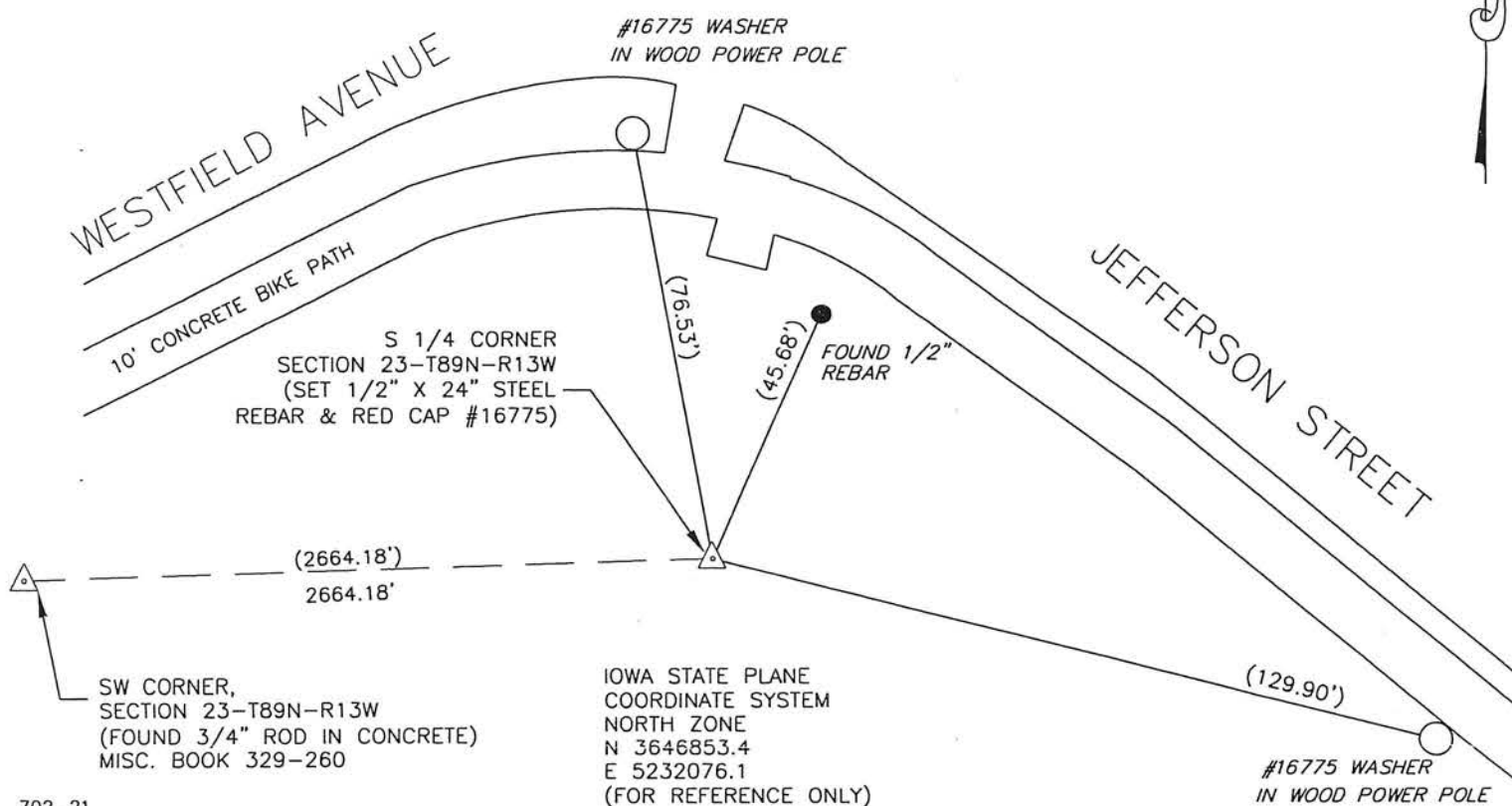
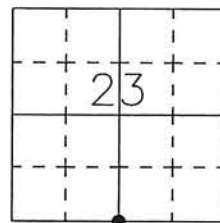
Previously recorded in Document No. 2007-02893 in County Recorder's Office.
(book, page, document number, etc.)

Monument Description and Remarks

Went to location of Section corner and could not find pin or accessories. Reset using coordinates from Techworks Addition. This certificate is being filed because monumentation has been replaced and to replace missing ties.

000.00 DENOTES RECORD DIMENSION
FROM CERTIFICATE 2007-02893
(000.00) DENOTES FIELD DIMENSION

PLAN - VIEW



702-21

I hereby certify that this land surveying document was prepared and the related survey work was performed by me or under my direct personal supervision and that I am a duly Licensed Land Surveyor under the laws of the State of Iowa.

Signature: David L. Scheil

David L. Scheil, L.S.

Date: JUNE 29, 2015 Lic. No. 16775

Pages or Sheets Covered by this Seal: THIS SHEET ONLY.

My license renewal date is December 31, 2016

SEAL

List Corners to be Indexed

Corners	Section	Twp	Range
S 1/4 CORNER,	23	89 N	13 W
N 1/4 CORNER,	26	89 N	13 W

