

I VS

Date: Aug 03, 2006 4:30:00 pm

Aud Fee:	0.00	Rec Fee:	5.00
----------	------	----------	------

Trans Tax:	0.00	Rec Management Fee	1.00
------------	------	--------------------	------

E-Com Fee:	1.00	Non-Standard Page Fee:	0.00
------------	------	------------------------	------

Filed for record in Black Hawk County, Iowa
Patricia S. Sass, County Recorder

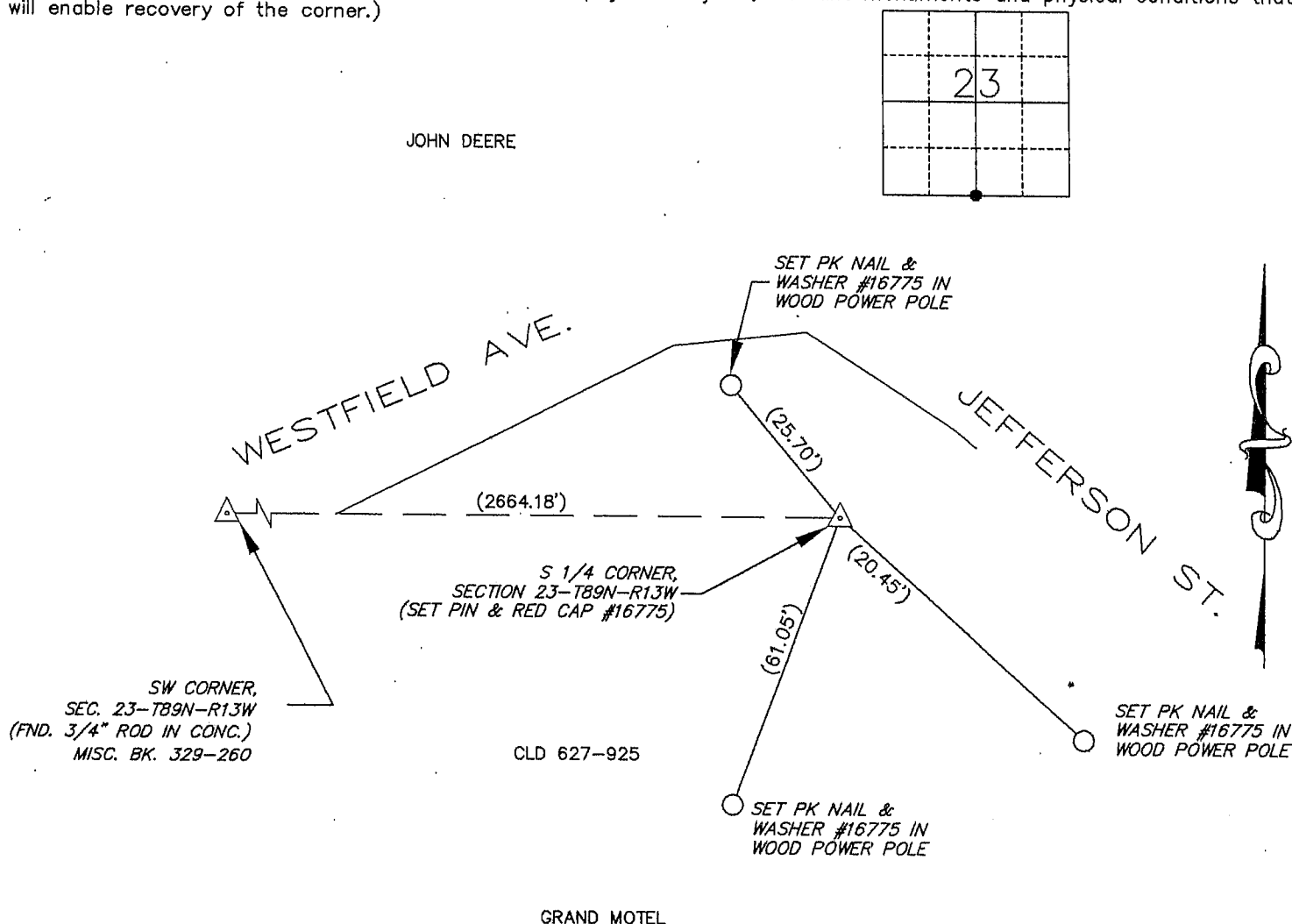
PHONE: (VOICE) 319-235-6294
(FAX) 319-235-0028

P
7

(Show reason for preparing this certificate, the evidence and detailed procedures used in establishing the corner positions and monumentation found or placed.)

PLAN - VIEW

(Show a minimum of three reference ties to durable physical objects, relevant monuments and physical conditions that will enable recovery of the corner.)



BK 569, PG. 38

I hereby certify that this land surveying document was prepared and the related survey work was performed by me or under my direct personal supervision and that I am a duly Licensed Land Surveyor under the laws of the State of Iowa.

Signature: _____
David L. Scheil, L.S.

Date: AUG. 02, 2006 Lic. No. 16775

Pages or Sheets Covered by this Seal: THIS SHEET ONLY.

My license renewal date is December 31, 2006

SEAL

List Corners to be Indexed

Corners	Section	Tw	Range
S 1/4 CORNER,	23	89 N	13 W

