

MSC
INDEX
MARGIN
PROOF
COMPARE

BLACK HAWK COUNTY IOWA: SS 17722
Filed for record Mar 11, 19 98 at
2:00 P.M. and recorded in Book 329
of MSC Page 260
of Christina J. Lass Recorder
Fee 1-5.00/
WAYNE CLAASSEN ENGINEERING & SURVEYING

WAYNE CLAASSEN ENGINEERING AND SURVEYING, INC.
P.O. BOX 898 WATERLOO, IOWA 50704-0898

PHONE: (VOICE) 319-235-6294
(FAX) 319-235-0028

UNITED STATES PUBLIC LAND SURVEY CORNER CERTIFICATE

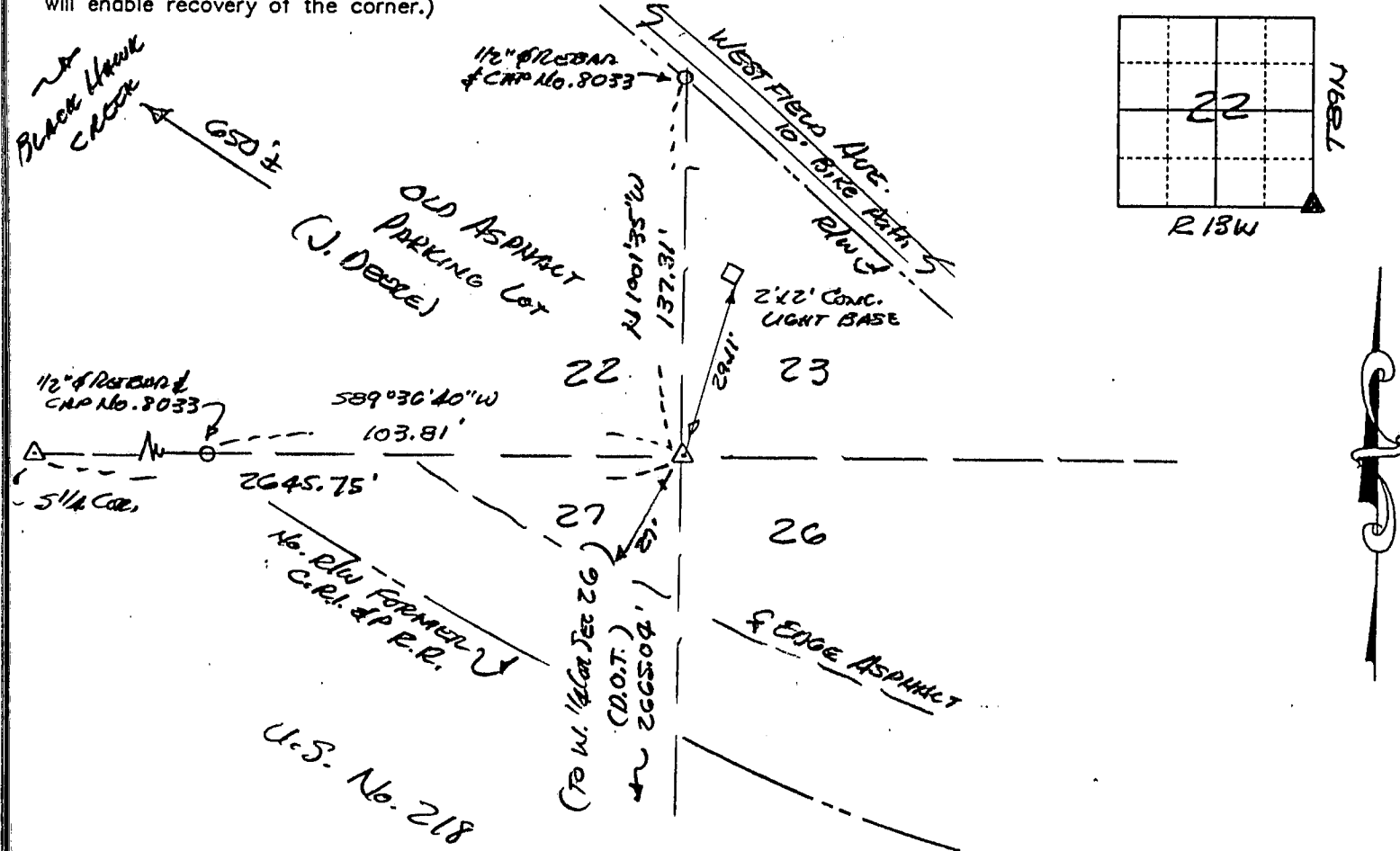
Land Survey Monuments situated in Section 22, Township 39N, Range 13W, of the Fifth Principal Meridian, BLACK HAWK County, Iowa.
Previously recorded in N/A in County Recorder's Office.
(book, page, document number, etc.)

(Show reason for preparing this certificate, the evidence and detailed procedures used in establishing the corner positions and monumentation found or placed.)

Monument Description and Remarks SE COR. SEC. 22 FOUND BRASS ROD 3/4" Ø SET IN CONCRETE 3" BELOW SURFACE OF ASPHALT PARKING LOT PER I.D.O.T. TIES OF 1980 CORNERSTONE SURVEY I-380 (R.R. BURNS).

PLAN - VIEW

(Show a minimum of three reference ties to durable physical objects, relevant monuments and physical conditions that will enable recovery of the corner.)

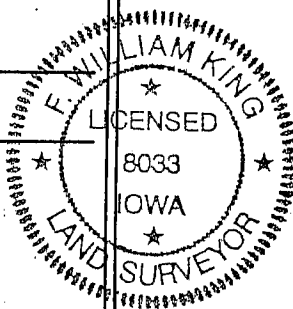


458-36

I hereby certify that the survey work was completed and this certificate was prepared by me or under my direct personal supervision and that I am a duly licensed land surveyor under the laws of the state of Iowa.

Signature: F. William King
(Name typed or printed: F. William King)
Date: 3-10-1998 Lic. No. 8033

SEAL



List Corners to be Indexed

Corners	Section	Twp	Range
SE	22	39N	13W

BOOK 329 PAGE 260