

INDEX
MARGIN
PROOF
COMPARE

17723
BLACK HAWK COUNTY IOWA: SS
Filed for record Mar 11, 19 98 at
2:00 P.M. and recorded in Book 329
of MDSC Page 261
Recorder
Fee 1-5.00/
WAYNE CLAASSEN ENGINEERING & SURVEYING

WAYNE CLAASSEN ENGINEERING AND SURVEYING, INC.
P.O. BOX 898 WATERLOO, IOWA 50704-0898

PHONE: (VOICE) 319-235-6294
(FAX) 319-235-0028

UNITED STATES PUBLIC LAND SURVEY CORNER CERTIFICATE

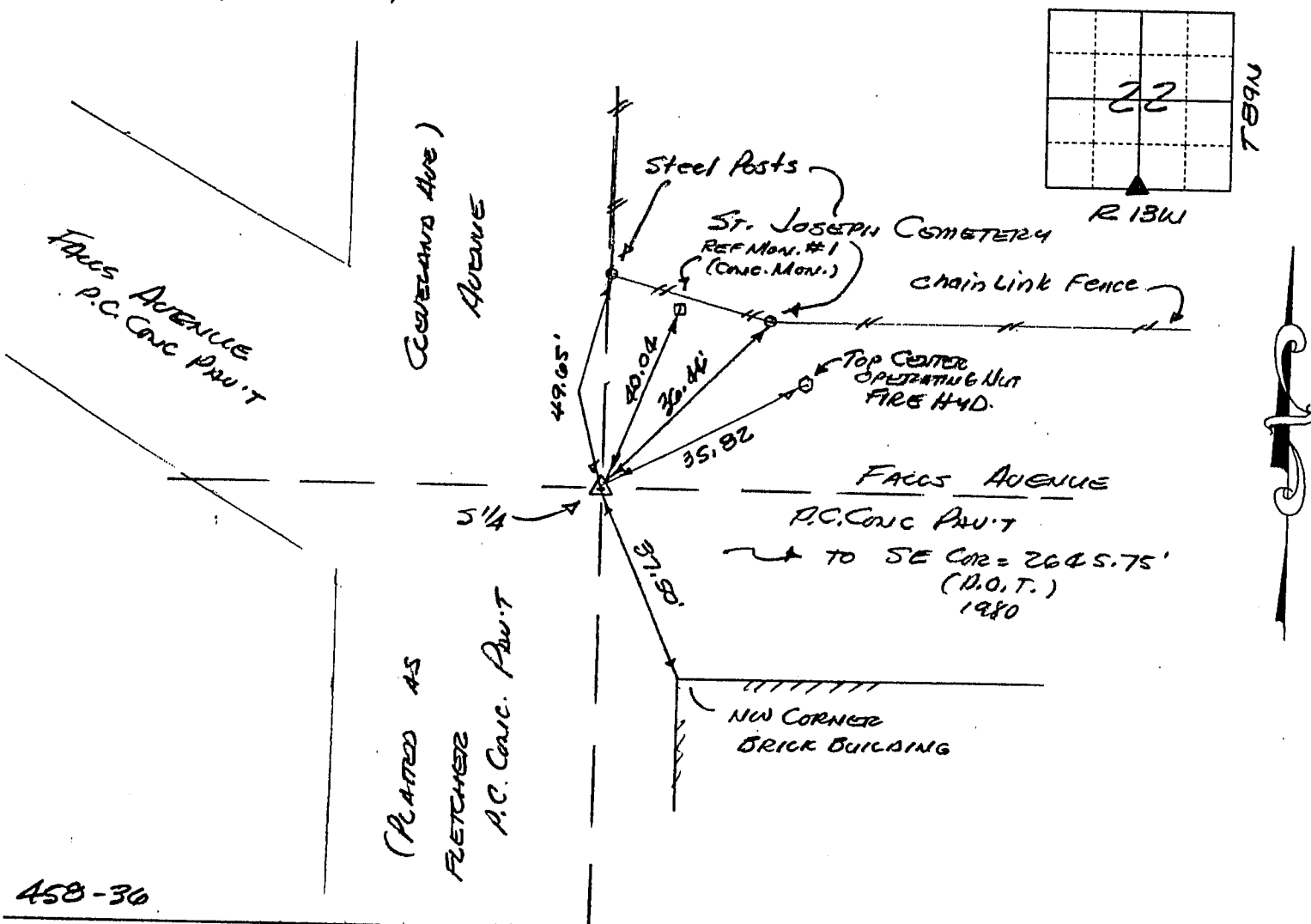
Land Survey Monuments situated in Section 22, Township 89N, Range 13W, of the Fifth Principal Meridian, BLACK HAWK County, Iowa.
Previously recorded in N/A in County Recorder's Office.
(book, page, document number, etc.)

(Show reason for preparing this certificate, the evidence and detailed procedures used in establishing the corner positions and monumentation found or placed.)

Monument Description and Remarks SOUTH 1/4 CORNER, FOUND 3" ALUMINUM DISK IN P.C. CONCRETE PAVING ON E FALLS AVENUE (EAST) & WEST LINE OF ST. JOSEPH CEMETERY PER "GALLOWAY" SUBDIVISION PLAT OF 1909. ALSO, D.O.T. CORSTINE SURVEY OF 1980.

PLAN - VIEW

(Show a minimum of three reference ties to durable physical objects, relevant monuments and physical conditions that will enable recovery of the corner.)

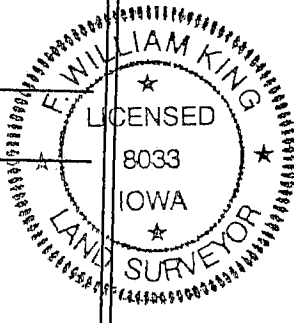


458-36

I hereby certify that the survey work was completed and this certificate was prepared by me or under my direct personal supervision and that I am a duly licensed land surveyor under the laws of the state of Iowa.

Signature: F. William King
(Name typed or printed: F.W. King)
Date: 3-10-1998 Lic. No. 8033

SEAL



List Corners to be Indexed

Corners	Section	Twp	Range
<u>5 1/4</u>	<u>22</u>	<u>89N</u>	<u>13W</u>

BOOK 329 PAGE 261