

_____ as page _____
Christina S. Soss Recorder
 FEE N/C _____
 BLACK HAWK COUNTY ENGINEER'S OFFICE

PREPARED BY: BLACK HAWK COUNTY ENGINEERS OFFICE
316 E. FIFTH STREET, ROOM 211 WATERLOO, IOWA 50703

PH.# (319) 833-3008
FAX.# (319) 833-3139

SLSI 9-94
CERT 12-96

UNITED STATES PUBLIC LAND SURVEY CORNER CERTIFICATE OF

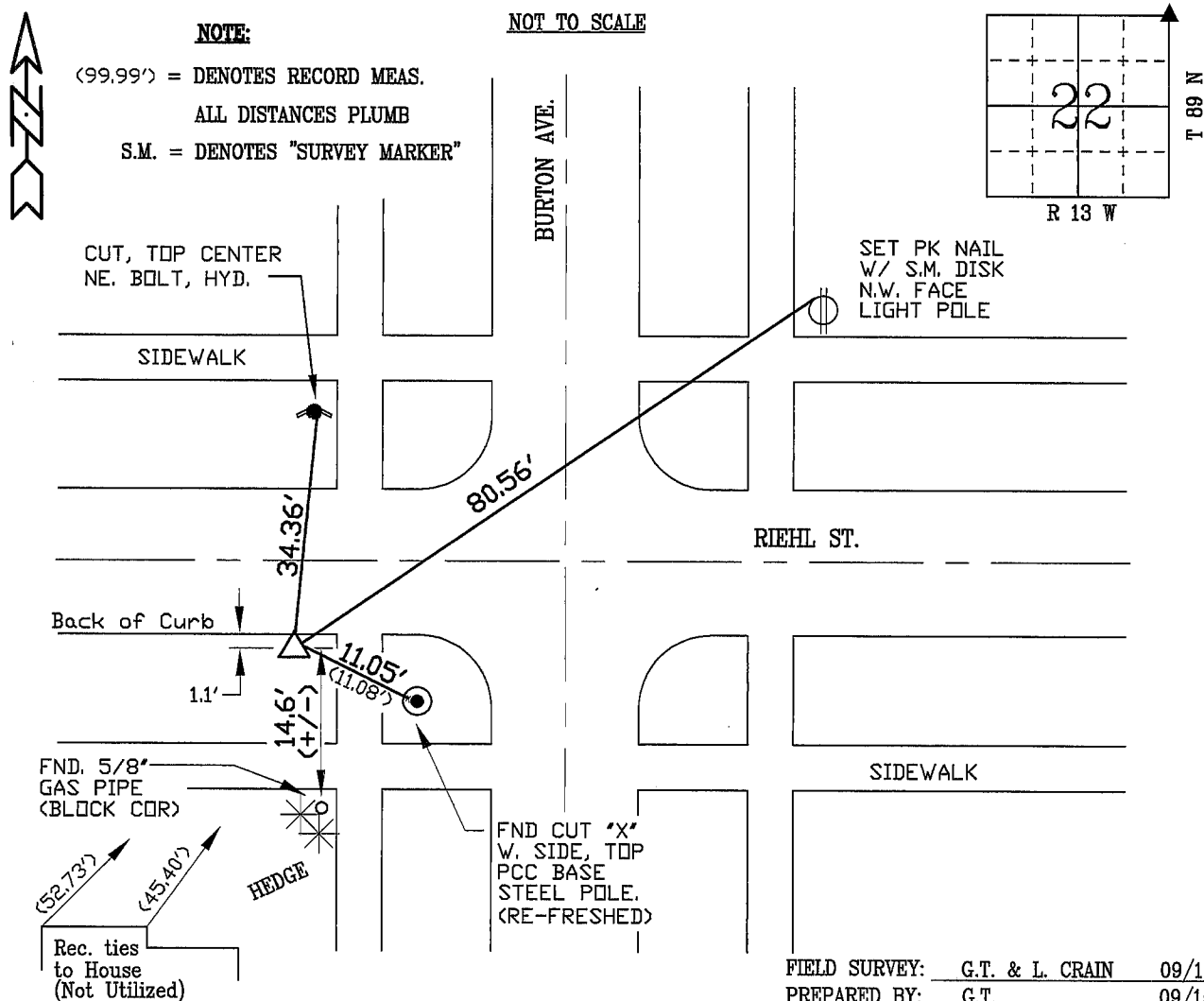
Land Survey Monuments situated in Section 22, Township 89 N, Range 13 W, of the Fifth Principal Meridian, BLACK HAWK County, Iowa. Previously recorded in Misc. Book N/A, Page N/A, in County Recorder's Office.

(Show reason for preparing this certificate, the evidence and detailed procedures used in establishing the corner positions and monumentation found or placed.)

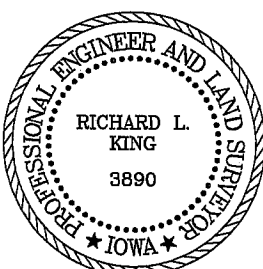
Monument Description and Remarks: FOUND 4" IDOT ALUM. MONUMENT, TOP BROKE FROM ROAD RE-CONSTRUCTION PROJECT. CORNER ORIG. EST. BY PLS #6705, R.R. BURNS, SEPT. 1980, FROM 1903 PARADISE ADDITION PLAT. RE-EST. ALUM. TOP, PLACING TILE TUBE WITH REBAR SET AROUND MONUMENT, AND FILLED WITH CONCRETE. LOCATED 1.25' DEEP, & 1.1' S. OF BACK CURB. ASSISTED W/ RESTORATION BY CITY OF WATERLOO, PER REQ.

PLAN - VIEW

(Show a minimum of three reference ties to durable physical objects, relevant monuments and physical conditions that will enable recovery of the corner.)



CERTIFICATION



I hereby certify that this land surveying document was prepared and the related survey work was performed by me or under my direct personal supervision and that I am a duly licensed Land Surveyor under the laws of the State of Iowa.

Surveyor under the laws of the State of Iowa.
Richard L. King 9/30/00
 Richard L. King (date)
 License Number 3890

My license renewal date is December 31, 2001

Pages or sheets covered by this seal:

This Land Corner Certificate Only.

LIST CORNERS TO BE INDEXED

Corner Section - Township - Range

N.E. COR 22 89 N 13 W