

Reserved for County Recorder's use.

Doc ID: 010299760001 Type: GEN  
Recorded: 10/22/2021 at 12:50:24 PM  
Fee Amt: \$7.00 Page 1 of 1  
Black Hawk County Iowa  
SANDIE L. SMITH RECORDER  
File **2022-00008761**

Kyle J. Helland, 6109 Chancellor Drive, Cedar Falls, Iowa 50613-6916, (319)-266-0161

# UNITED STATES PUBLIC LAND SURVEY CORNER CERTIFICATE OF

LAND SURVEY MONUMENTS SITUATED IN SECTION NO. 22, TOWNSHIP NO. 89 NORTH, RANGE  
NO. 13 WEST OF THE FIFTH PRINCIPAL MERIDIAN, BLACK HAWK COUNTY, IOWA.  
PREVIOUSLY RECORDED IN DOC. NO. 2007002892

(SHOW REASON FOR PREPARING THIS CERTIFICATE, THE EVIDENCE AND DETAILED PROCEDURES USED IN ESTABLISHING THE  
CORNER POSITIONS AND MONUMENTATION FOUND OR PLACED.)

MONUMENT DESCRIPTION AND REMARKS:

NO LONGER THREE VALID REFERENCE TIES. SURVEY COMPLETED IN THE SE 1/4 OF SEC. 22-T89N-R13W.

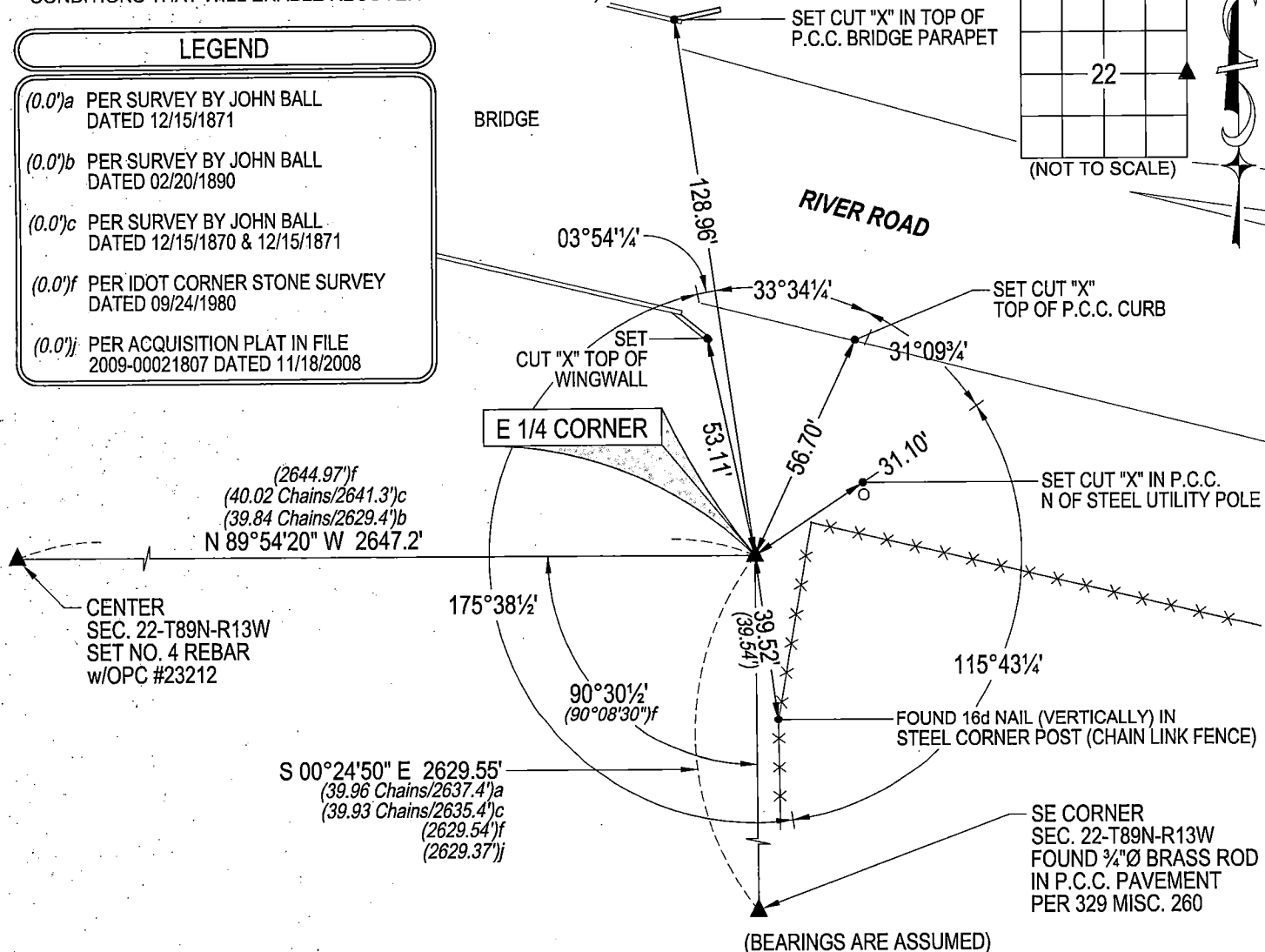
**E 1/4 CORNER:** USPLSCC RECORDED IN DOC. NO. 2007002892 DATED 08/02/2006 CALLS FOR [NO CORNER CERTIFICATE  
ON FILE. FOUND 4" S.C.M. AS PER TIES IDOT TIES 20" DEEP. SET 1/2" X 24" STEEL REBAR WITH RED PLASTIC CAP  
#16775 ABOVE IT AT GROUND LEVEL.] PLAN VIEW CALLS FOR [FOUND 4" IDOT MON. 20" DEEP SET PIN & RED CAP  
#16775]. FOUND NO. 4 REBAR w/RPC #16775 0.2± DEEP.

## PLAN VIEW

(SHOW A MINIMUM OF THREE REFERENCE TIES TO DURABLE PHYSICAL OBJECTS, RELEVANT MONUMENTS AND PHYSICAL  
CONDITIONS THAT WILL ENABLE RECOVERY OF THE CORNER.)

### LEGEND

- (0.0)a PER SURVEY BY JOHN BALL  
DATED 12/15/1871
- (0.0)b PER SURVEY BY JOHN BALL  
DATED 02/20/1890
- (0.0)c PER SURVEY BY JOHN BALL  
DATED 12/15/1870 & 12/15/1871
- (0.0)f PER IDOT CORNER STONE SURVEY  
DATED 09/24/1980
- (0.0) PER ACQUISITION PLAT IN FILE  
2009-00021807 DATED 11/18/2008



HELLAND ENGINEERING & SURVEYING, LTD.  
6109 Chancellor Drive  
Cedar Falls, Iowa 50613-6916  
(319)-266-0161

BRASS TAG = 4d. NAIL & 13/16" Ø BRASS TAG DRAWN BY: JPH  
SHINER = 1" Ø STEEL SHINER w/MASONRY NAIL  
OPC = PLASTIC CAP (O=ORANGE, R=RED, Y=YELLOW)  
(00') RECORDED AS FILE NAME: 21-216-B-22.DWG



I hereby certify that this land surveying document was prepared  
and the related survey work was performed by me or under my  
direct personal supervision and that I am a duly licensed  
Professional Land Surveyor under the laws of the State of Iowa.  
*Kyle J. Helland* 10/25/2021  
Kyle J. Helland  
License Number 23212  
My license renewal date is December 31, 2021.  
All pages or sheets are covered by this seal except:

### LIST CORNERS TO BE INDEXED

CORNER	SECTION	TOWNSHIP	RANGE
E 1/4 CORNER	22	89N	13W
W 1/4 CORNER	23	89N	13W