

Index Legend

County:	Black Hawk
Section(s):	21 Township: 89 N Range: 13 W
Corner(s):	Southeast Corner
Requestor:	City of Waterloo
Proprietor:	City of Waterloo
Surveyor:	William W. Castle
Surveyor Company:	City of Waterloo Engineering Department 715 Mulberry Street, Waterloo, IA 50703
Return To:	715 Mulberry St, Waterloo, IA 50703 291-4312



Doc ID: 009697290001

Type: GEN

Recorded: 11/06/2019 at 03:46:19 PM

Fee Amt: \$7.00 Page 1 of 1

Black Hawk County Iowa

SANDIE L. SMITH RECORDER

File2020-00008451

United States Public Land Survey Corner Certificate

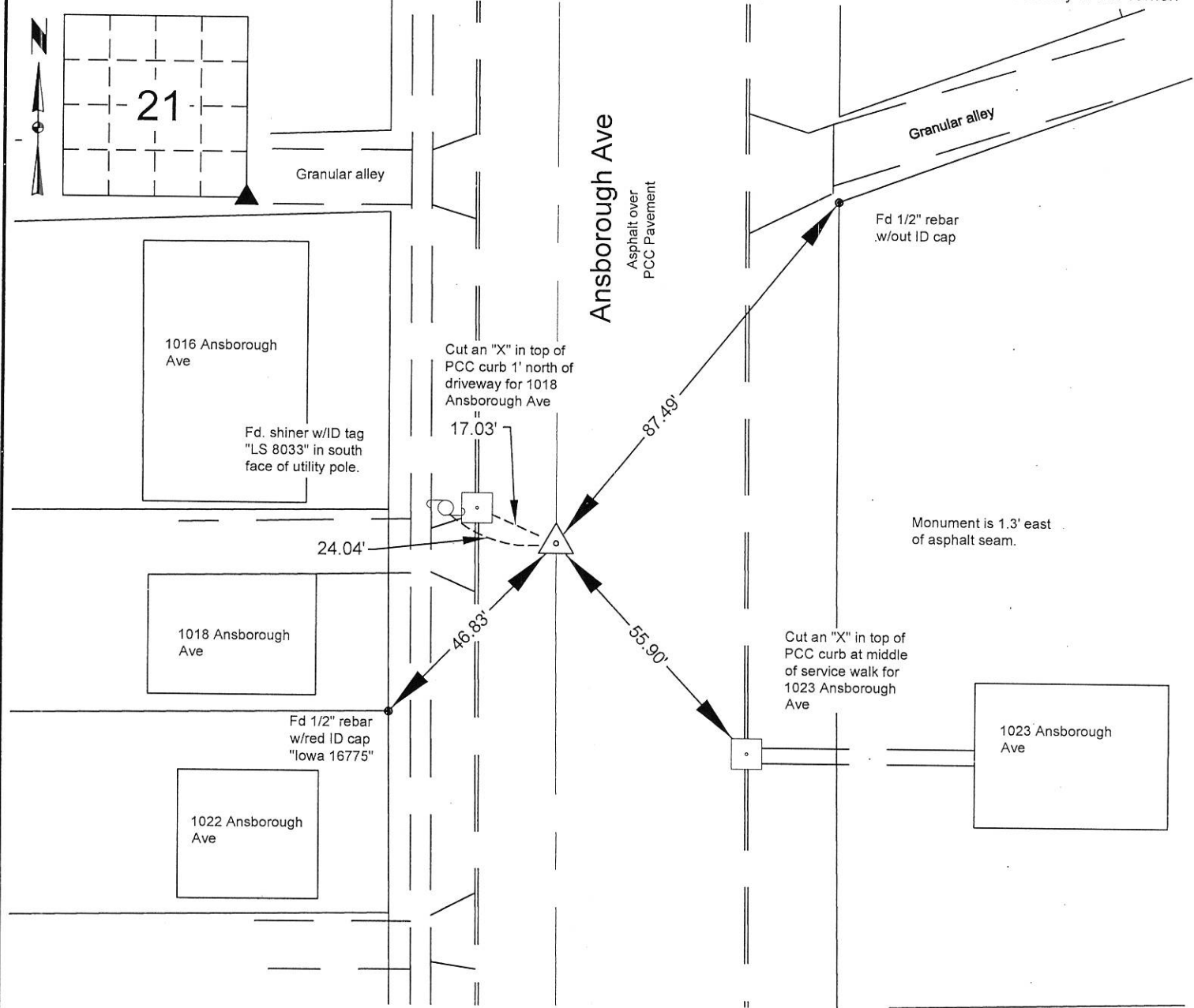
Land Survey Monument situated in Section 21, Township 89 North, Range 13 West, of the Fifth Principal Meridian, Black Hawk County, Iowa.

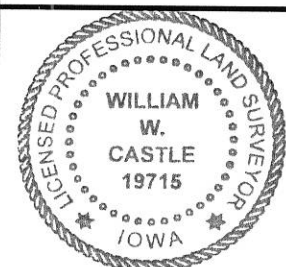
Previously recorded in Misc 295 Pg 930 in the Black Hawk County Recorder's Office.

Reason for preparing this certificate, the evidence and detailed procedures used in establishing the corner position, and monumentation found or placed. Existing pavement overlain with 3" of asphalt as part of City of Waterloo FY2019 Asphalt Overlay Program, Contract No. 964. Prior to construction, found 3" aluminum disc in concrete pavement placed as part of the Ansborough Avenue reconstruction project, contract no. 362. After construction, set 3" mag spike at corner using project controls.

PLAN VIEW

Show a minimum of three reference ties to durable physical objects, relevant monuments and physical conditions that will enable recovery of the corner.





I hereby certify that this surveying document was prepared and the related survey work was performed by me or under my direct personal supervision and that I am a duly licensed Land Surveyor under the laws of the State of Iowa.

William W. Castle

11/4/19

William W. Castle, PLS

License Number 19715

My License Renewal Date is December 31, 2019.

Pages or sheets covered by this seal : 1/1

List corners to be indexed

Corners	Section	Twp	Range
SE	21	89	13

City of Waterloo Engineering Department

715 Mulberry Street, Waterloo, Iowa 50703

Phone: (319) 291-4312 Fax: (319) 291-4262

Drawn By: WWC Scale: none

Field Work Date: 7/29/19 & 10/23/19

Date Drawn: 10-25-2019

Sheet No.

1 of 1