

INDEX NS BLACK HAWK COUNTY, IOWA:ss

FEE BOOK # 2006 8477

PROOF FILED FOR RECORD SEP 29 2005 AT 10:00 A.M. FEE 1-5.00-1.00/

COMPARED

Patricia A. Leco

BLACK HAWK COUNTY RECORDER

ENV WAYNE CLAASSEN ENGINEERING AND SURVEYING, INC.
P.O. BOX 898 WATERLOO, IOWA 50704-0898PHONE: (VOICE) 319-235-6294
(FAX) 319-235-0028

UNITED STATES PUBLIC LAND SURVEY CORNER CERTIFICATE

Land Survey Monuments situated in Section 21, Township 89 North, Range 13 West, of the Fifth Principal Meridian, Black Hawk County, Iowa.Previously recorded in _____ in County Recorder's Office.
(book, page, document number, etc.)

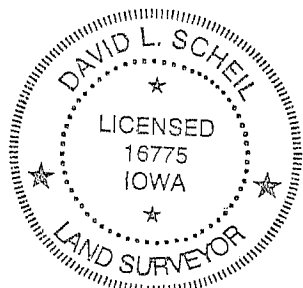
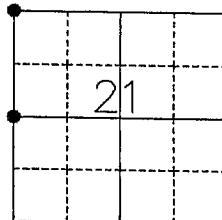
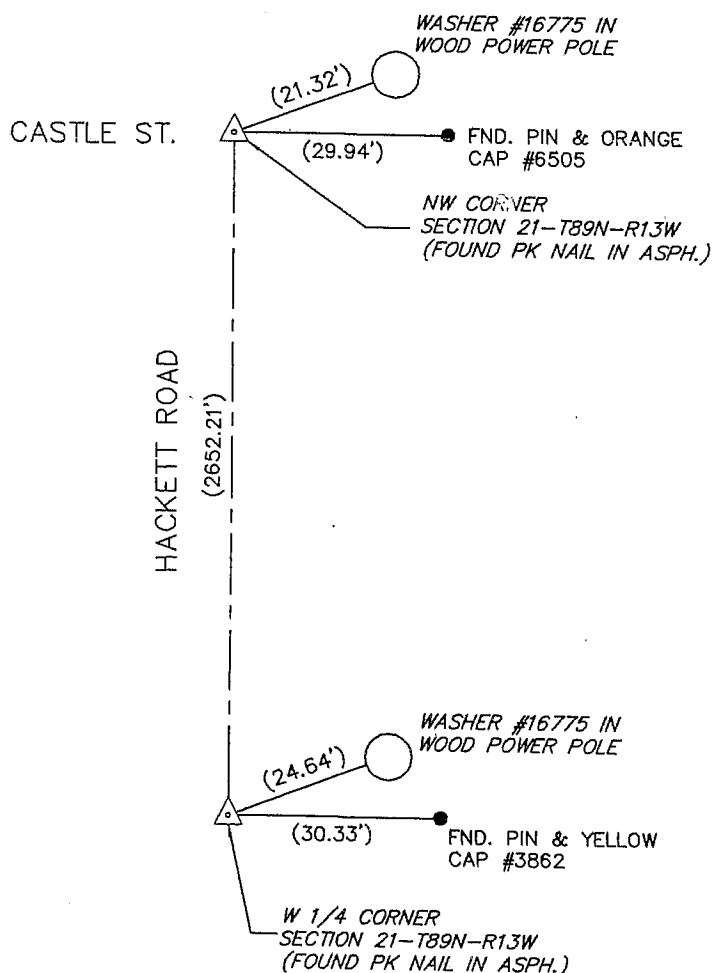
(Show reason for preparing this certificate, the evidence and detailed procedures used in establishing the corner positions and monumentation found or placed.)

Monument Description and Remarks _____

W 1/4 Corner: No certificate on file. Found PK nail as per Auditor's Whitney Road Plat.NW Corner: No certificate on file. Found PK nail as per Auditor's Whitney Road Plat.

PLAN - VIEW

(Show a minimum of three reference ties to durable physical objects, relevant monuments and physical conditions that will enable recovery of the corner.)



I hereby certify that the survey work was completed and this certificate was prepared by me or under my direct personal supervision and that I am a duly licensed land surveyor under the laws of the state of Iowa.

Signature: *David L. Scheil*
David L. Scheil, L.S.Date: SEPT. 26, 2005 Lic. No. 16775

My license renewal date is December 31, 2006

SEAL

List Corners to be Indexed

Corners	Section	Twp	Range
W 1/4 CORNER,	21	89 N	13 W
NW CORNER,	21	89 N	13 W