

I  
P  
Z

Document Number: 2007025370

Date: May 30, 2007 4:30:00 pm

Aud Fee: 0.00 Rec Fee: 5.00

Trans Tax: 0.00 Rec Management Fee: 1.00

E-Com Fee: 1.00 Non-Standard Page Fee: 0.00

Filed for record in Black Hawk County, Iowa  
Judith A. McCarthy, County Recorder

Jeffrey P. Helland, 1107 Technology Parkway, Cedar Falls, Iowa 50613-6951, (319)-266-0161

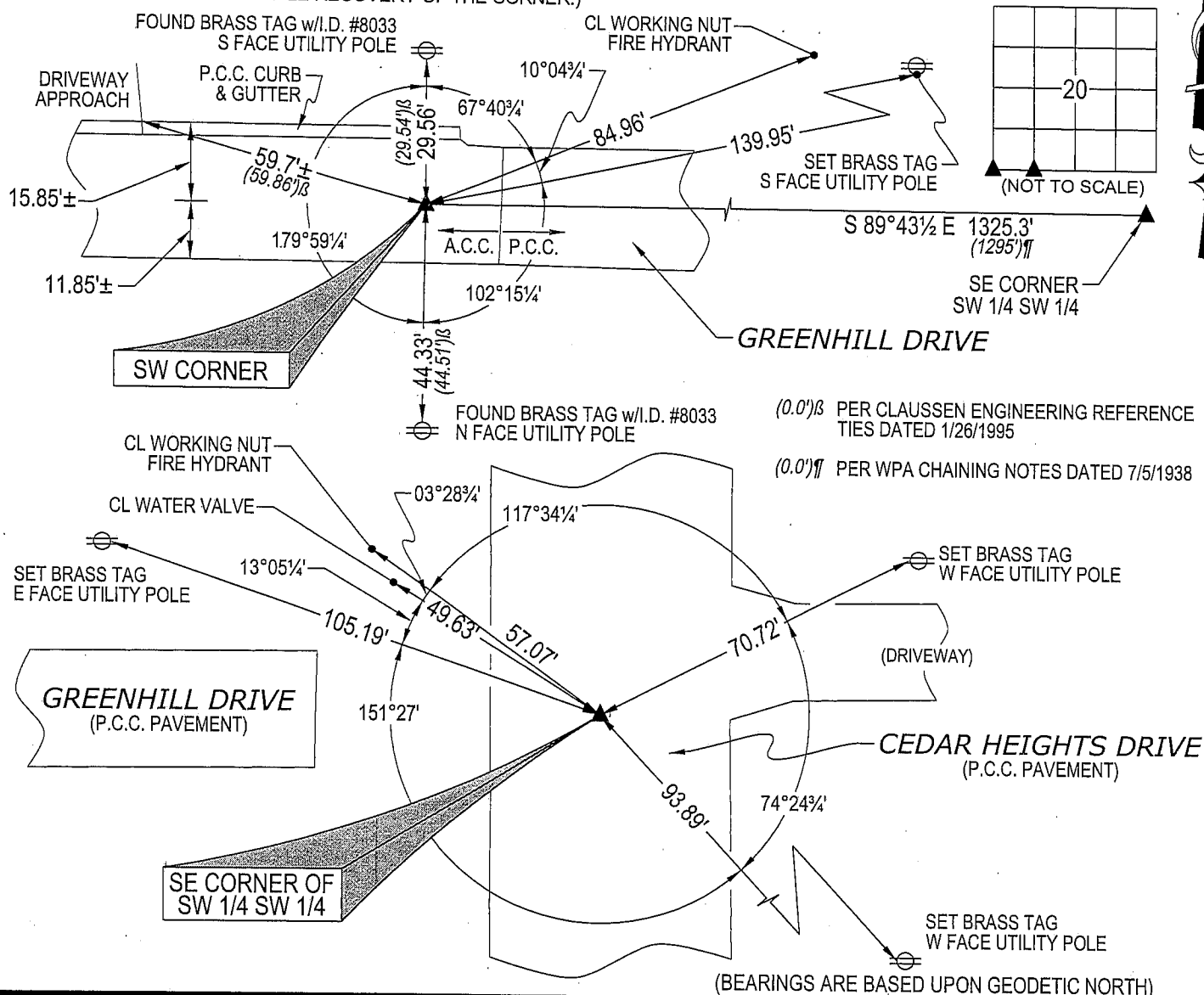
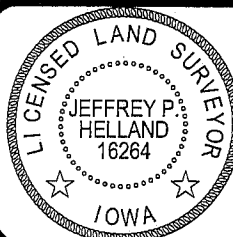
UNITED STATES PUBLIC LAND SURVEY CORNER CERTIFICATE  
OFLAND SURVEY MONUMENTS SITUATED IN SECTION NO. 20, TOWNSHIP NO. 89 NORTH, RANGE  
NO. 13 WEST OF THE FIFTH PRINCIPAL MERIDIAN, BLACK HAWK COUNTY, IOWA.  
PREVIOUSLY RECORDED IN N/A(SHOW REASON FOR PREPARING THIS CERTIFICATE, THE EVIDENCE AND DETAILED PROCEDURES USED IN ESTABLISHING THE  
CORNER POSITIONS AND MONUMENTATION FOUND OR PLACED.)

## MONUMENT DESCRIPTION AND REMARKS:

NO USPLSCC ON FILE. SURVEY COMPLETED IN THE W 1/2 SW 1/4 OF SEC. 20-T89N-R13W.

→ **SW CORNER:** NO BLACK HAWK COUNTY ENGINEER REFERENCE TIES AVAILABLE. CLAUSSEN ENGINEERING  
REFERENCE TIES DATED 1/26/1995 CALL FOR [2"Ø BRASS DISC FLUSH IN CONC.]. ROAD IN AREA OF CORNER  
HAS BEEN OVERLAID WITH A.C.C. FOUND "P-K" NAIL IN A.C.C. PAVEMENT CORRESPONDING TO SAID  
REFERENCE TIES.→ **SE CORNER SW 1/4 SW 1/4:** NO BLACK HAWK COUNTY ENGINEER REFERENCE TIES AVAILABLE. FOUND "X"  
CUT IN P.C.C. PAVEMENT. SAID CUT "X" IS 6.1'± W OF CL AND 0.9'± N OF A E-W JOINT.

## PLAN VIEW

(SHOW A MINIMUM OF THREE REFERENCE TIES TO DURABLE PHYSICAL OBJECTS, RELEVANT MONUMENTS AND PHYSICAL  
CONDITIONS THAT WILL ENABLE RECOVERY OF THE CORNER.)HELLAND ENGINEERING & SURVEYING, LTD.  
1107 Technology Parkway  
Cedar Falls, Iowa 50613-6951  
(319)-266-0161SHINER = 8D NAIL & 1 5/16"Ø METAL SHINER  
BRASS TAG = 13/16"Ø BRASS TAG  
OPC = PLASTIC CAP (O=ORANGE, R=RED, Y=YELLOW)  
(00') RECORDED AS FILE NAME: 07-146C1.DWGI hereby certify that this land surveying document was prepared  
and the related survey work was performed by me or under my  
direct personal supervision and that I am a duly licensed Land  
Surveyor under the laws of the State of Iowa.Jeffrey P. Helland 5/2/07  
Jeffrey P. Helland  
License Number 16264  
My license renewal date is December 31, 2007.  
All pages or sheets are covered by this seal except:

## LIST CORNERS TO BE INDEXED

CORNER	SECTION	TOWNSHIP	RANGE
SW CORNER	20	89N	13W
SE CORNER SW 1/4 SW 1/4	20	89N	13W