

* WAYNE CLAASSEN ENGINEERING AND SURVEYING, INC.
Env P.O. BOX 898 WATERLOO, IOWA 50704-0898

PHONE: (VOICE) 319-235-6294
(FAX) 319-235-0028

Land Survey Monuments situated in Section 20, Township 89 North, Range 13 West, of the Fifth Principal Meridian, Black Hawk County, Iowa.

Previously recorded in _____ in County Recorder's Office.
(book, page, document number, etc.)

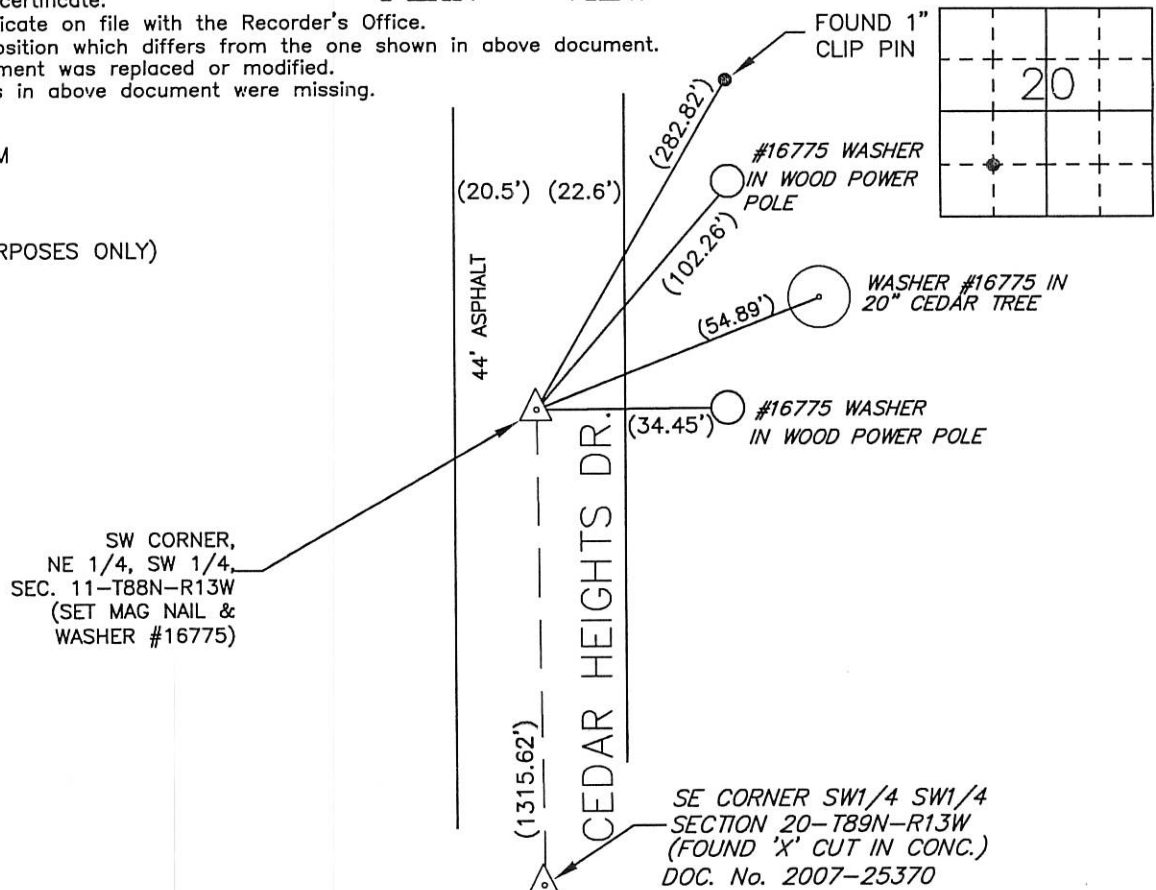
Did not find PK Nail due to road construction on Cedar Heights Drive. Set mag nail & washer #16775 base upon the following Plats of Survey:

1. Ryken Engineering Survey in E₂ W₂ in this section signed 4-25-1970. Shows corner but not the monumentation.
2. Shive-Hattery survey of Parcel A in this section signed Dec. 05, 1995. Shows Pk nail set
3. Claassen Engineering survey of Parcel "C" in this section signed Oct 16, 1997. Shows corner but not the monumentation.

Reason for filing certificate:

- Reason for filing certificate:
- ☒ There is no certificate on file with the Recorder's Office.
- ☐ Accepts corner position which differs from the one shown in above document.
- ☐ The corner monument was replaced or modified.
- ☐ The reference ties in above document were missing.

IOWA STATE PLANE
COORDINATE SYSTEM
NORTH ZONE
N 3647940.6
E 5214826.0
(FOR LOCATION PURPOSES ONLY)



701-54

I hereby certify that this land surveying document was prepared and the related survey work was performed by me or under my direct personal supervision and that I am a duly Licensed Land Surveyor under the laws of the State of Iowa.

Signature: _____
David L. Scheil, L.S.

Date: NOV 03, 2016 Lic. No. 16775

Pages or Sheets Covered by this Seal: THIS SHEET ONLY.

My license renewal date is December 31, 2016

SEAL

List Corners to be Indexed

Corners	Section	Twp	Range
SE CORNER, NE 1/4, SW 1/4,	20	89 N	13 W

