

MISC INDEX MARGIN PROOF COMPARE

BLACK HAWK COUNTY IOWA: SS
Filed for record Mar 24, 1999, at
2:00 P.M. and recorded in Book 333
of MISC Page 722

22200

Recorder
Fee 1-5.00/

WAYNE CLAASSEN ENGINEERING & SURVEYING

WAYNE CLAASSEN ENGINEERING AND SURVEYING, INC.
P.O. BOX 898 WATERLOO, IOWA 50704-0898

PHONE: (VOICE) 319-235-6294
(FAX) 319-235-0028

UNITED STATES PUBLIC LAND SURVEY CORNER CERTIFICATE

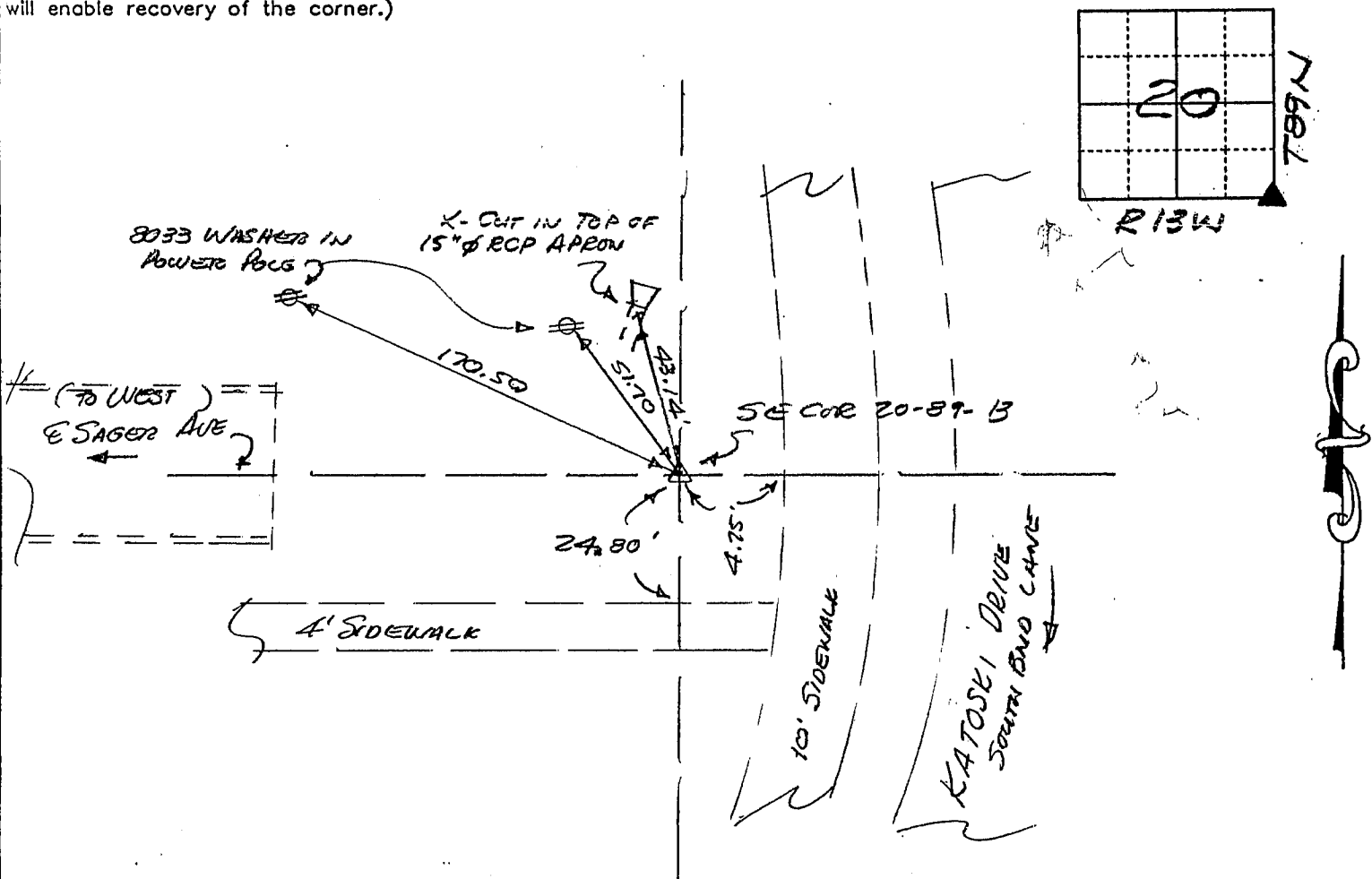
Land Survey Monuments situated in Section 20, Township 89N, Range 13W, of the Fifth Principal Meridian, BLACK HAWK County, Iowa.
Previously recorded in N/A in County Recorder's Office.
(book, page, document number, etc.)

(Show reason for preparing this certificate, the evidence and detailed procedures used in establishing the corner positions and monumentation found or placed.)

Monument Description and Remarks FOUND 3 1/2" Ø ALUMINUM DISK MARKED 20 21 29 28 2'
deep. Set 12" x 24" REDAR & CAP 8033 OVER. (SE CORNER 20-89-13)

PLAN - VIEW

(Show a minimum of three reference ties to durable physical objects, relevant monuments and physical conditions that will enable recovery of the corner.)



431-7

I hereby certify that the survey work was completed and this certificate was prepared by me or under my direct personal supervision and that I am a duly licensed land surveyor under the laws of the state of Iowa.

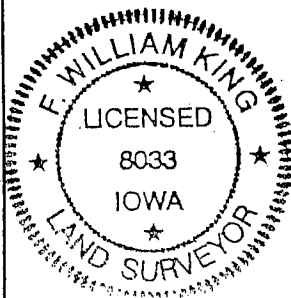
Signature: F. William King
(Name typed or printed: F. WILLIAM KING)

Date: MARCH 23, 1999 Lic. No. 8033

SEAL

List Corners to be Indexed

Corners	Section	Twp	Range
SE	20	89N	13W



BOOK 333 PAGE 722