

UNITED STATES PUBLIC LAND SURVEY CORNER CERTIFICATE

OF

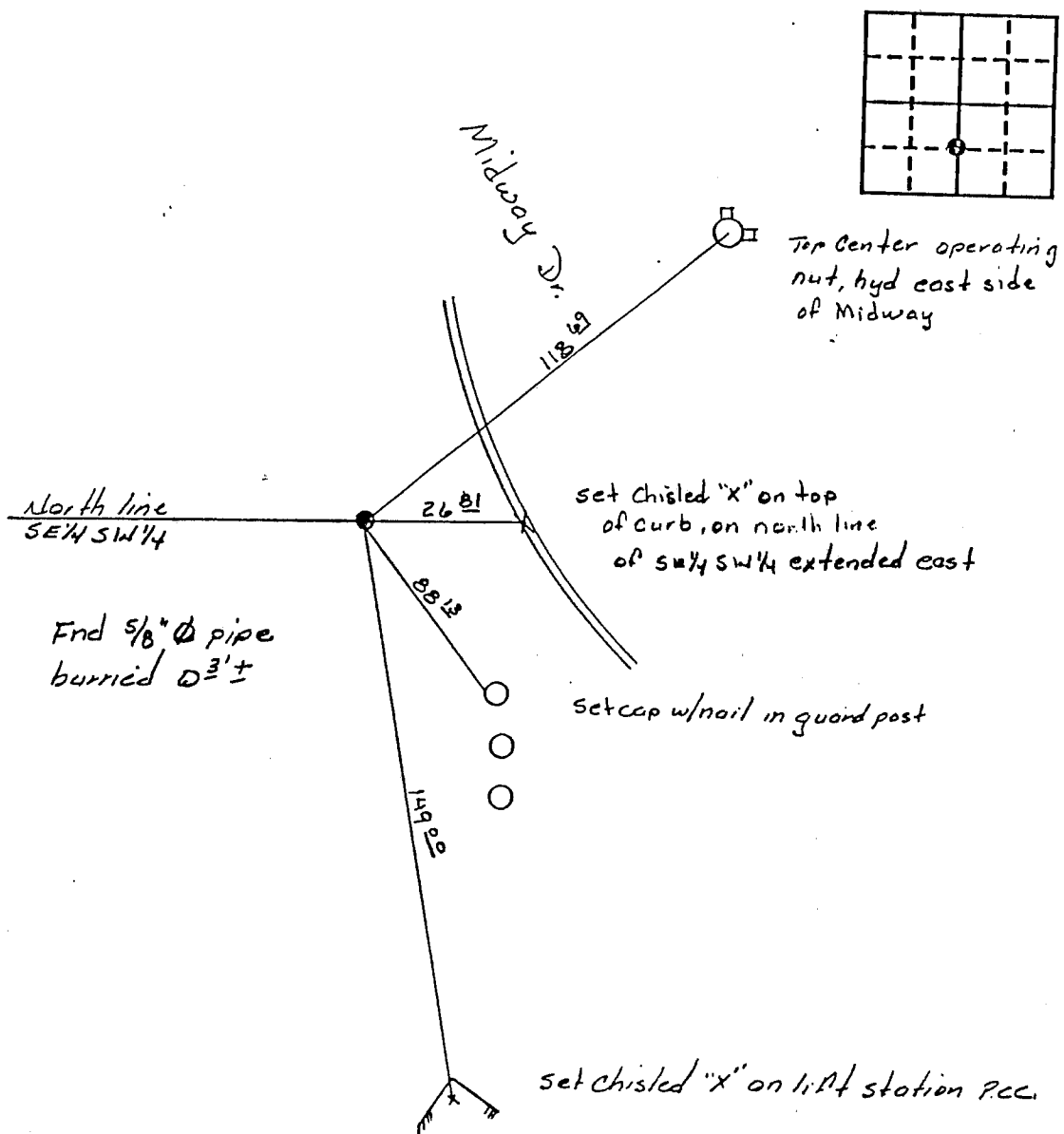
Land Survey Monuments situated in Section 20, Township 89 North, Range 13 West, of the Fifth Principal Meridian, Black Hawk County, Iowa.
Previously recorded in Book _____, Page _____.

(Show reason for preparing this certificate, the evidence and detailed procedures used in establishing the corner positions and monumentation found or placed.)

Monument Description and Remarks: Found 3/8" Ø pipe - Corner has been continuously
monumented, but no record of what with. In 1908 records show corner marked with a stone.
Later surveys referenced to corner show the corner monumented, but do not indicate what
with. Pipe is on line with the monument marking the intersection of Cedar Heights Dr.
right-of-way line and the north line of MIDWAY ADDITION and the monument marking north-
east corner of MIDWAY ADDITION. The measured distance between Cedar Heights Dr. (See Back)

PLAN - VIEW

(Show a minimum of three reference ties to durable physical objects, relevant monuments and physical conditions that will enable recovery of the corner.)



I hereby certify that the survey work was completed and this certificate was prepared by me or under my direct personal supervision and that I am a duly registered land surveyor under the laws of the state of Iowa.

Keith E. Vlademar 11/7/90
Keith E. Vlademar
REGISTERED LAND SURVEYOR NO. 9781

List Corners to be Indexed

Corners	Section	Twp	Range
N.W. Cor.			
SW 1/4 SE 1/4	20	89N	13W

SEAL



BOOK **294** PAGE **102**

right-of-way and pipe measures 1267.83 ft. (1268.3 ft. - record), the distance between
1216.71 ft. (1217.3 ft. - record).