



Doc ID: 003975330001 Type: GEN  
Kind: CORNER  
Recorded: 11/16/2009 at 02:09:25 PM  
Fee Amt: \$9.00 Page 1 of 1  
Instr# 200900014769  
Black Hawk County Iowa  
JUDITH A MCCARTHY RECORDER  
Book 1080 Page 97019 - 97019

File **2010-00009966**

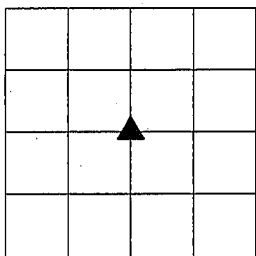
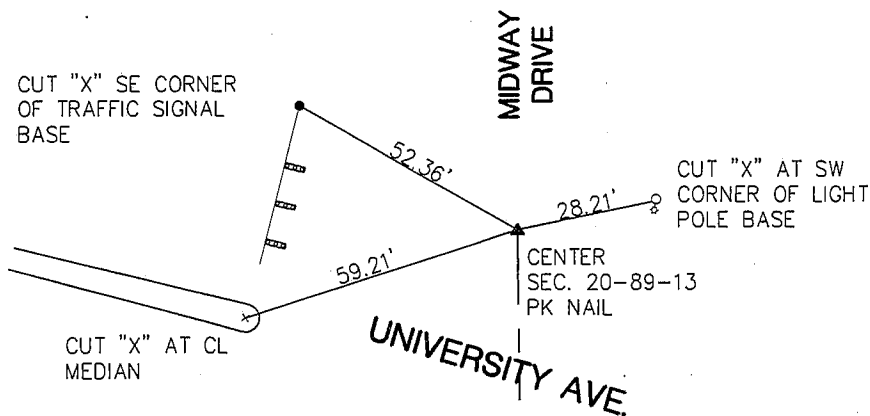
*Enw:*

PREPARED BY: DON PUFFETT, SHIVE-HATTERY, INC. 201 THIRD AVE. SE, STE 500, CEDAR RAPIDS, IOWA 52406 (319) 364-0227

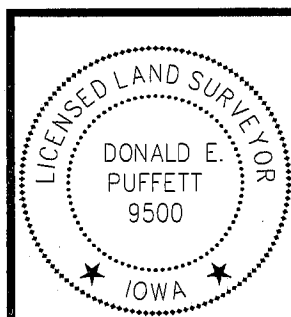
### UNITED STATES PUBLIC LAND SURVEY CORNER CERTIFICATE

Land Survey Monuments Situated in Section 20, Township 89 North, Range 13 of the Fifth Principal Meridian, Black Hawk County, Iowa.

Narrative: Set PK nail in asphalt. There is no certificate on file with the county recorder. Location was established by extending the east line of the NE ¼ SW ¼ line from the southeast corner of said NE ¼ SW ¼ (CC Bk. 294 Pg. 102) along the west ROW line of Midway Drive and by the dimensions of record in Warranty Deed Doc. # 2008002813. See retracement survey plat recorded this date.



Corners to be indexed:  
CENTER OF SECTION 20-89-13



I hereby certify that this land surveying document was prepared and the related survey work was performed by me or under my direct personal supervision and that I am a duly licensed Land Surveyor under the Laws of the State of Iowa.

*Donald E. Puffett* 11/16/09  
(signature) (date)

Donald E. Puffett

License number: 9500

My license renewal date is December 31, 2009

Pages or sheets covered by this seal: 1 OF 1

Project# 209262-0

9.00x