

SC
MISC
INDEX VS
MARGIN VS
PROOF
COMPARE

015907
BLACK HAWK COUNTY IOWA:SS
Filed for record Jan 27, 2000 at
1:30 P.M. and recorded in Book 337
of MISC Page 73
Patricia A. Sess
FEE 4-20.00/
Veenstra & Kimm, Inc.
3000 Westown Pkwy West Des Moines IA 50266-1320-90

RECORDER

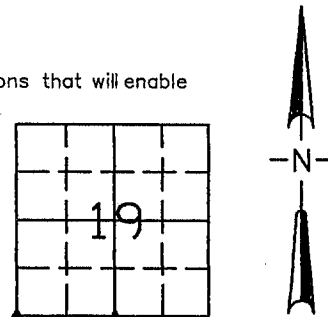
UNITED STATES PUBLIC LAND SURVEY CORNER CERTIFICATE
OF

Land Survey Monuments situated in Section 19, Township 89N, Range 13W, of the Fifth Principal Meridian, BLACK HAWK County, Iowa.
Previously recorded in (S 1/4 COR. BK. 319, P. 744) (SW COR. BK. 305, P. 278) in County Recorder's Office.
(book, page, document number, ect.)

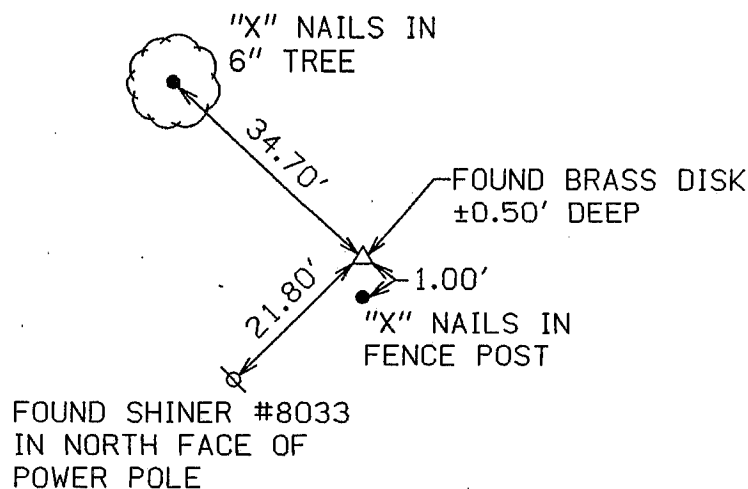
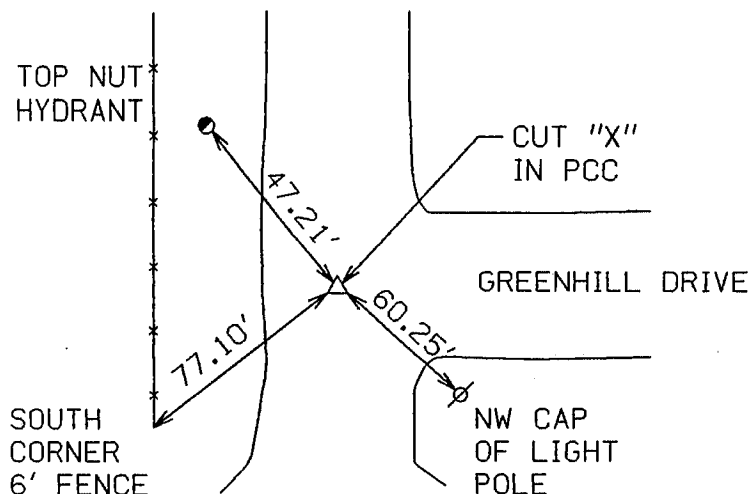
(Show reason for preparing this certificate, the evidence and detailed procedures used in establishing the corner positions and monumentation found or placed.)
Mounment Description and Remarks: SOUTH QUARTER CORNER FOUND BY USING FOUND MONUMENTS
ON SUBDIVISION PLATS AND SETTING TEMPORARY TIES, THEN RE-SET FOLLOWING CONSTRUCTION
WITH CUT "X". SOUTHWEST CORNER LOCATED USING BRIARWOOD SUBDIVISION PLATS AND
MEASURING BACK TO COMMENCMENT POINT.

PLAN - VIEW

(Show a minimum of three reference ties to durable physical objects, relevant monuments and physical conditions that will enable recovery of the corner)



S 1/4 COR SEC. 19-89-13 SW COR. SEC. 19-89-13

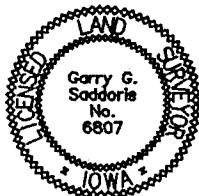


I hereby certify that this land surveying document was prepared and the related survey work was performed by me or under my direct personal supervision and that I am a duly licensed Land Surveyor under the laws of the State of Iowa.

Signed *Garry G. Saddoris*
Garry G. Saddoris, L.S.
Iowa License No. 6807
My license renewal date is December 31, 2001

Date 11/18/00

SEAL



List Corners to be Indexed

Corners	Section	Twp.	Range
SW COR.	19	89	13
NW COR.	30	89	13
NE COR.	25	89	14
SE COR.	24	89	14
S 1/4 COR.	19	89	13
N 1/4 COR.	30	89	13